

CURVE TABLE: ALIGNMENTS

ID	RADIUS	ARCH LENGTH	DELTA	TANGENT	PC STATION	PT STATION
C1	100.00	113.23	064°53'	63.56	51+81.39	52+94.63
C2	100.00	4.47	002°34'	2.23	53+81.36	53+85.82
C3	100.00	1.68	000°58'	0.84	54+82.66	54+84.33
C4	100.00	0.42	000°14'	0.21	55+83.28	55+83.70
C5	100.00	5.04	002°53'	2.52	57+80.97	57+86.02
C6	100.00	14.25	008°10'	7.14	58+76.35	58+90.61
C7	100.00	4.33	002°29'	2.16	59+81.30	59+85.63
C8	300.00	44.41	008°29'	22.25	61+87.61	62+32.03
C9	50.00	35.38	040°33'	18.47	63+33.21	63+68.60
C10	50.00	34.03	039°00'	17.71	63+96.95	64+30.98
C11	50.00	36.04	041°18'	18.84	65+68.36	66+04.40
C12	15.00	13.11	050°04'	7.01	66+25.79	66+38.90
C13	20.00	13.88	039°46'	7.23	66+79.81	66+93.69
C14	20.00	15.32	043°54'	8.06	67+04.01	67+19.33
C15	20.00	14.64	041°57'	7.67	68+12.05	68+26.69
C16	20.00	16.19	046°23'	8.57	68+26.69	68+42.88
C17	64.50	56.69	050°21'	30.32	71+45.32	72+02.01
C18	45.00	84.20	107°12'	61.04	72+02.01	72+86.21
C19	15.00	14.22	054°20'	7.70	73+10.85	73+25.07
C20	50.00	27.50	031°31'	14.11	73+34.28	73+61.78
C21	40.00	30.16	043°12'	15.84	73+61.78	73+91.94
C22	20.00	20.91	059°55'	11.53	74+79.46	75+00.38
C23	45.00	56.01	071°19'	32.29	75+27.95	75+83.97
C24	55.00	22.77	023°43'	11.55	76+42.53	76+65.30
C25	195.00	73.56	021°37'	37.22	78+88.26	79+61.82
C26	195.00	35.30	010°22'	17.70	80+27.07	80+62.37
C27	100.00	46.41	026°35'	23.63	80+62.37	81+08.77
C28	200.00	65.41	018°44'	33.00	81+61.65	82+27.06
C29	75.00	41.38	031°37'	21.23	83+09.33	83+50.71
C30	81.00	108.16	076°31'	63.86	85+36.54	86+44.70

LINE TABLE: ALIGNMENTS

ID	LENGTH	DIRECTION
L1	86.73	S61°03'52.39"E
L2	96.83	S58°30'16.84"E
L3	98.95	S59°27'54.64"E
L4	197.27	S59°13'30.27"E
L5	90.34	S56°20'06.02"E
L6	90.70	S48°10'08.40"E
L7	201.98	S45°41'18.89"E
L8	101.18	S54°10'16.27"E
L9	28.35	S13°37'27.82"E
L10	137.37	S52°37'31.34"E
L11	21.39	N86°04'37.93"E
L12	40.91	N36°00'31.04"E
L13	10.32	N03°45'12.87"W
L14	92.72	N40°08'49.20"E
L15	48.05	N35°43'12.31"E
L16	107.86	N35°55'06.34"E
L17	40.42	N35°28'49.65"E
L18	40.72	N35°43'36.19"E
L19	65.40	N31°18'17.79"E
L20	24.64	N88°09'04.89"E
L21	9.21	N33°49'26.48"E
L22	87.52	N45°31'05.07"E
L23	27.57	N14°23'53.54"W
L24	58.57	N85°43'00.62"W
L25	222.96	N62°00'04.54"W
L26	65.25	N83°36'57.42"W
L27	52.88	N67°23'49.96"W
L28	82.28	N48°39'35.79"W
L29	185.83	N80°16'14.71"W
L30	58.71	N03°45'44.16"W

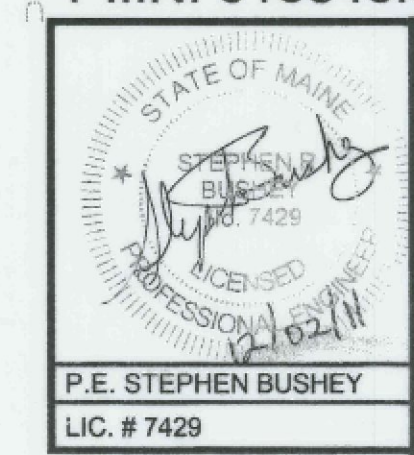
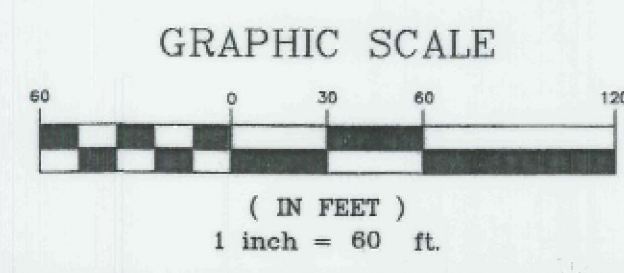
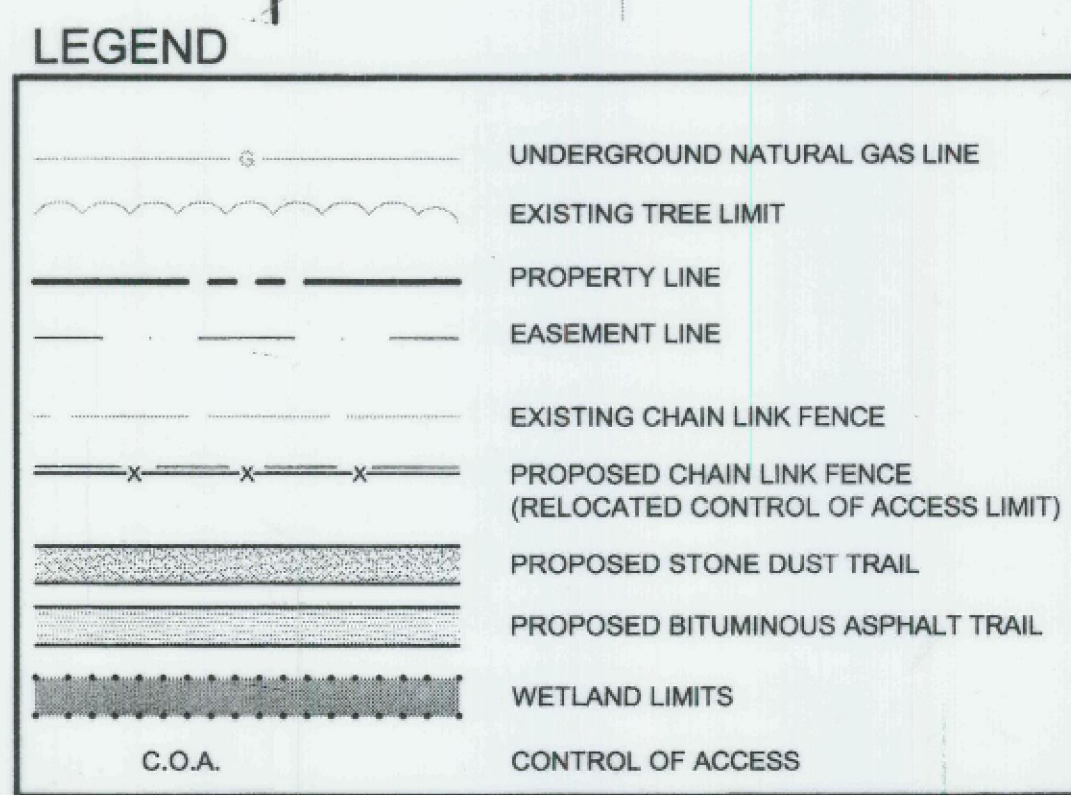
REGISTRY BLOCK

STATE OF MAINE
 YORK COUNTY REGISTRY OF DEEDS
 RECEIVED 1126, 2012
 AT 11 h 00 m 00 M. AND RECORDED IN
 PLAN BOOK 353 PAGE 33
 ATTEST _____ REGISTRAR



NOTE:
 THIS PLAN IS INTENDED AS A SUPPLEMENT TO D.O.T. FILE NO. 16-205 AND SHOWS THE REALIGNMENT OF THE CONTROL OF ACCESS LIMITS WITH I-195 IN SACO, MAINE. THE REALIGNMENT OF THE CONTROL OF ACCESS IS NECESSARY DUE TO THE CONSTRUCTION OF THE MULTI-USE RECREATIONAL TRAIL (EASTERN TRAIL) PIN # 13340.00.

THESE RECORD DOCUMENTS HAVE BEEN PREPARED BASED ON INFORMATION PROVIDED BY OTHERS. THE CONSULTANT HAS NOT VERIFIED THE ACCURACY AND/OR COMPLETENESS OF THIS INFORMATION AND SHALL NOT BE RESPONSIBLE FOR ANY ERRORS OR OMISSIONS THAT MAY BE INCORPORATED AS A RESULT OF ERRONEOUS INFORMATION PROVIDED BY OTHERS. THE LOCATION OF THE C.O.A. FENCE IS BASED ON GPS DATA PROVIDED BY SHAW BROS. INC. NOVEMBER 2011.



P.I.N. 013340.00

STATE OF MAINE
 DEPARTMENT OF TRANSPORTATION
 BUREAU OF HIGHWAYS
 CONTROL OF ACCESS PLAN

STATE HIGHWAY "195"

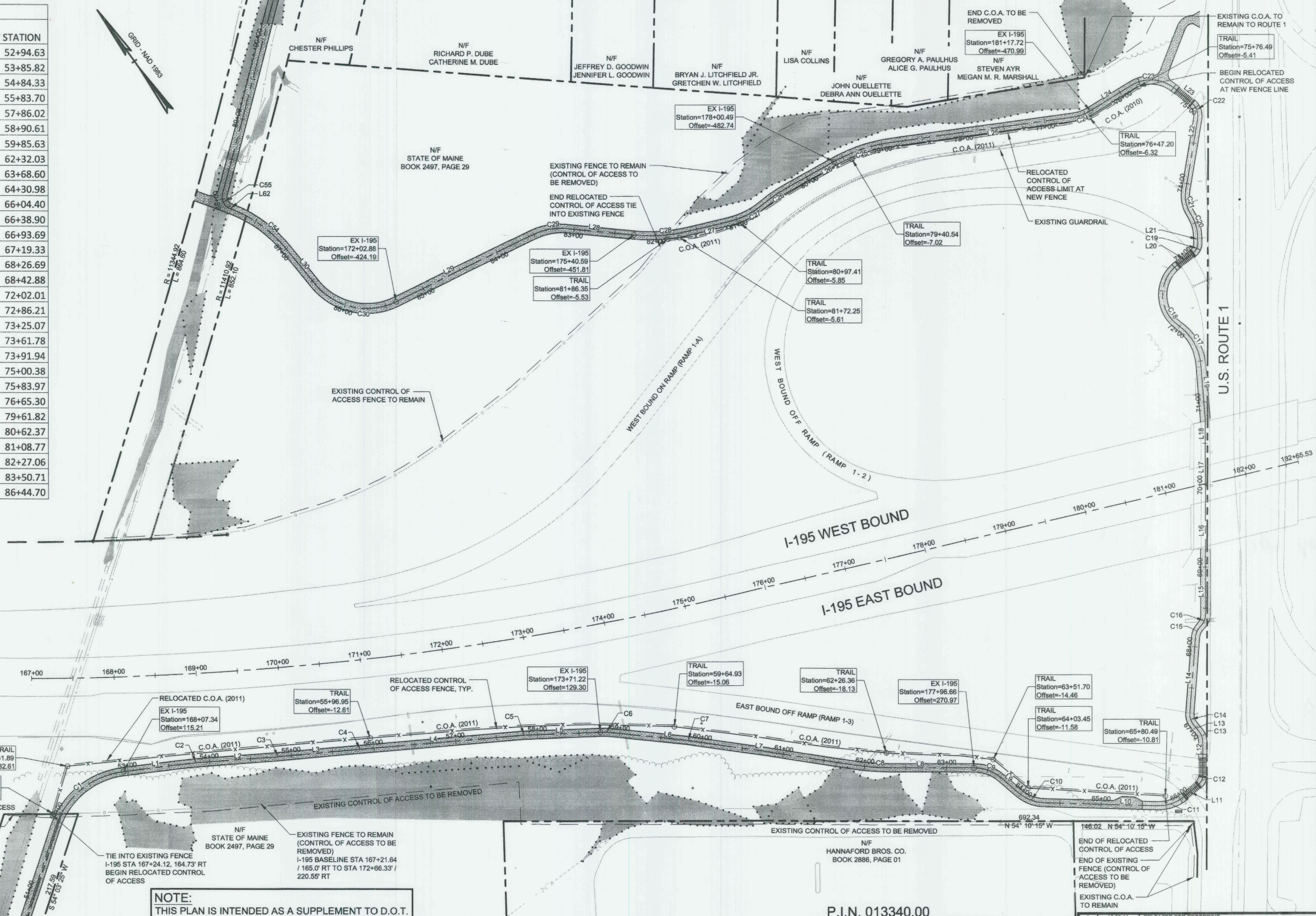
SACO YORK COUNTY
 FEDERAL AID PROJECT NO. QI-195-2 (3), I-195-2 (4) PART I

DATE: NOVEMBER 2011
 SCALE: 1 INCH = 60 FEET

APPROVED: _____
 COMMISSIONER, DAVID A. COLE

SHEET NO. 1 OF 1 SHEET
 D.O.T. FILE NO. 16 - 205 B

CHIEF ENGINEER, KENNETH L. SWEENEY



R:\2069 Esb J:\Sec-COB\CD\DWG\CONSTRUCTION\2069-CONTROL OF ACCESS-AS BUILT.dwg, Layout1, 12/22/2011 1:40, cwintermale