

FED. ROAD DIST. NO.	STATE	FED. AID PROJ. NO.	FISCAL YEAR	SHEET NO.	TOTAL SHEETS
9	MAINE	NRH-147A		1	12

LISBON

# STATE OF MAINE STATE HIGHWAY COMMISSION

## PLAN AND PROFILE STATE HIGHWAY "Z" LISBON

ANDROSCOGGIN COUNTY  
FEDERAL AID PROJECT NO. NRH-147-A

CONVENTIONAL SIGNS	
STATE OR NATIONAL LINE	SURVEY LINE
COUNTY LINE	CULVERT
TOWN LINE	DROP INLET
UNFENCED PROPERTY	TROLLEY POLE
FENCE	POWER POLE
RIGHT OF WAY LINE	TEL. POLE
TRAVELED WAY	MARSH
RAILROAD	TREES
RETAINING WALL	STONE WALL

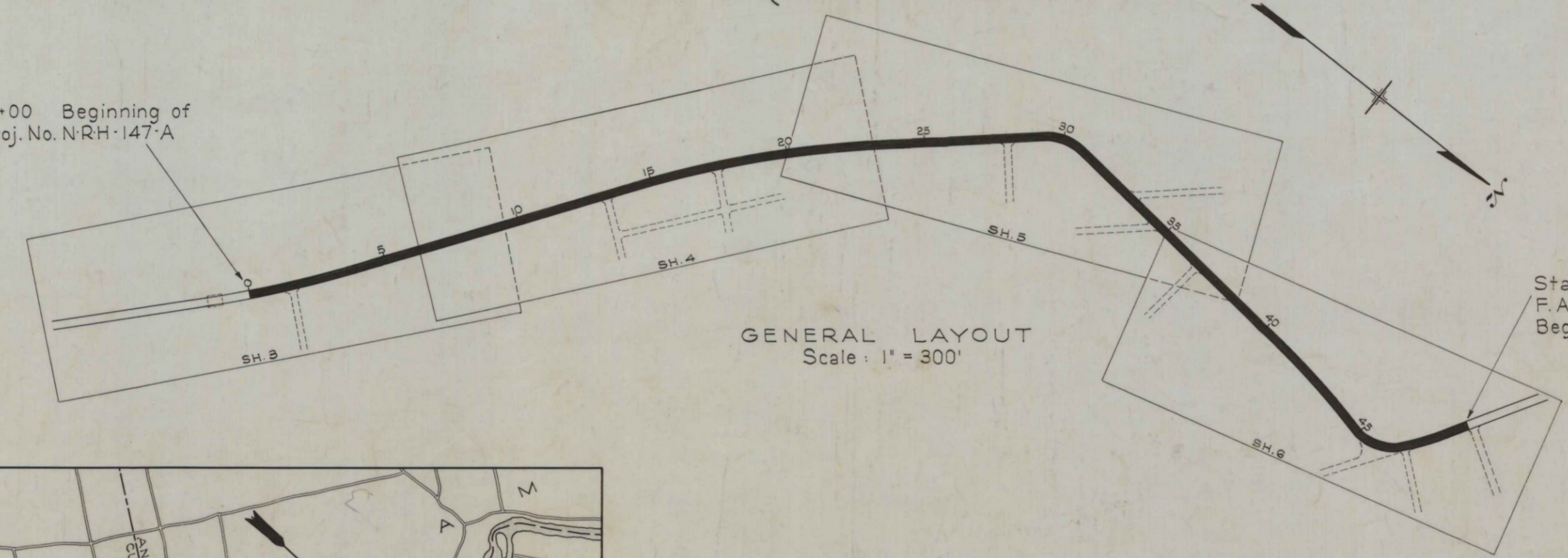
INDEX OF SHEETS		
SHEET No. 1	TITLE PAGE	STA. 0+00 to 49+15.0
SHEET No. 2	TYPICAL SECTIONS	
SHEET No. 3-6	PLAN AND PROFILE	STA. 0+00 to 49+15.0
SHEET No. 7-12	CROSS-SECTIONS	STA. 0+00 to 49+15.0
SHEET No.	BRIDGES	STA.
SHEET No.	SPECIAL DETAILS	

TOTAL LENGTH 0.930 MILES

SCALES { PLAN 1 IN. = 50 FT.  
 { PROFILE { HOR. 1 IN. = 50 FT.  
 { VER. 1 IN. = 5 FT.  
 { CROSS SECTIONS 1 IN. = 5 FT.

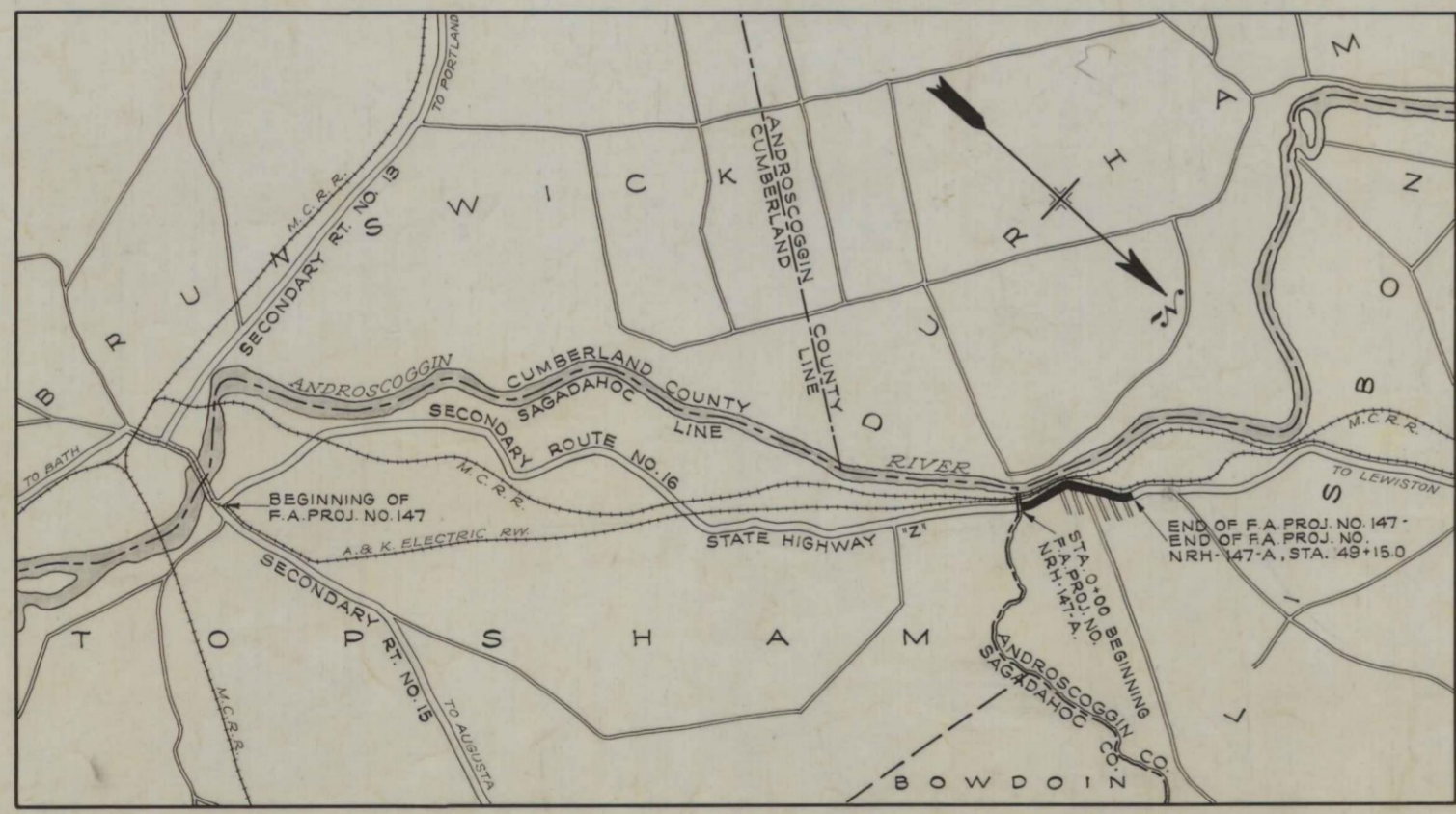
Note: The Commission reserves the right to increase or decrease the length of this project, but, in no event, more than 25% of the original contract.

Sta. 0+00 Beginning of F.A. Proj. No. NRH-147-A



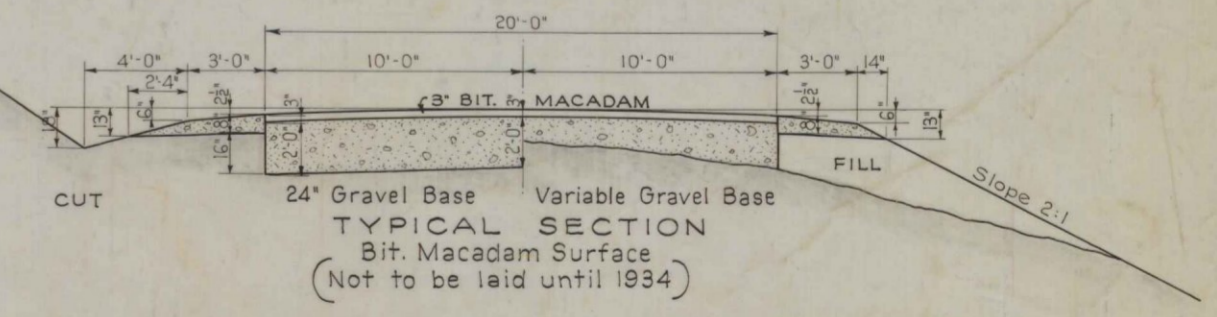
GENERAL LAYOUT  
Scale: 1" = 300'

Sta. 49+15.0 End of F.A. Proj. No. NRH-147-A  
Beginning of F.A. Proj. No. 29.



PORTIONS OF CUMBERLAND, SAGADAHOC & ANDROSCOGGIN COUNTIES  
Approximate Scale: 1 inch = 1 mile

Note: All work contemplated under this contract, to be governed by, and in conformity with, the specifications adopted Mar. 21, 1932, with all subsequent approved revisions, except as modified on these plans.  
 The above specifications, wherein not in conformity with the Federal Government's Rules and Regulations for work done under the National Recovery Act, relative to the furnishing of all materials by the contractor, or otherwise not in conformity therewith, are hereby amended to meet said Rules and Regulations of the Federal Government.

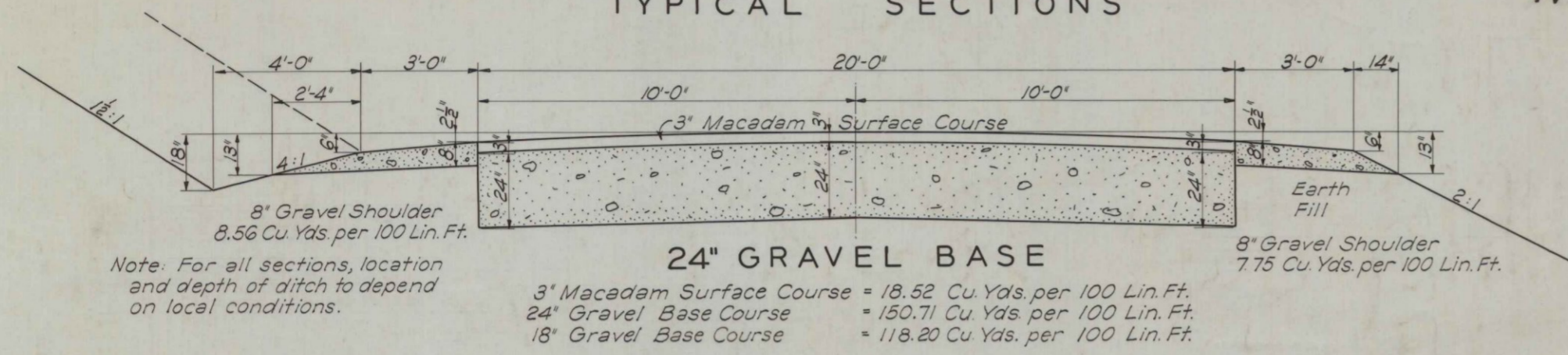


TYPICAL SECTION  
3" BIT MACADAM SURFACE  
(Not to be laid until 1934)

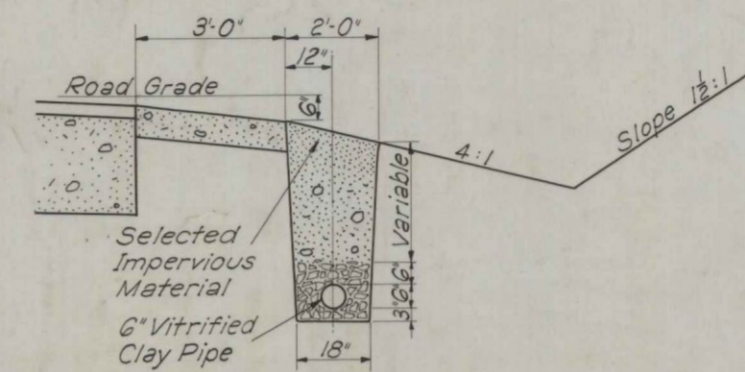
APPROVED:  
MAINE STATE HIGHWAY COMMISSION  
*Edward A. Peabody* CHAIRMAN  
*Edward G. Hammon*  
*Paul G. Thurston*  
*Frederic S. Barnes* CHIEF ENGINEER

APPROVED:  
U. S. BUREAU OF PUBLIC ROADS  
[Signature] DISTRICT ENGINEER  
[Signature] CHIEF ENGINEER  
[Signature] DIRECTOR

TYPICAL SECTIONS

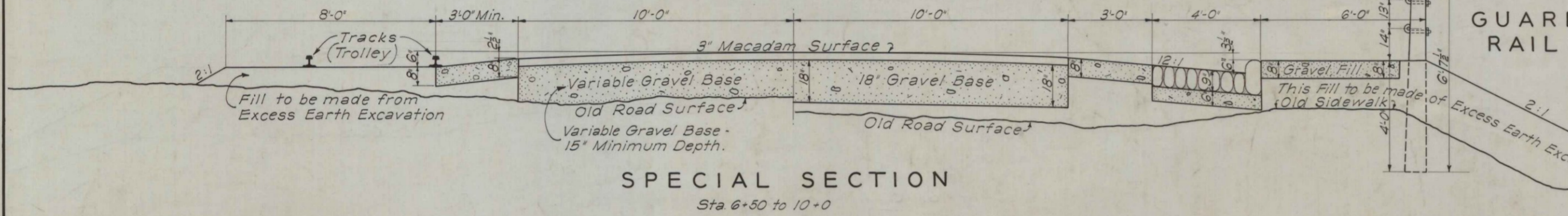


NOTE: 3" MACADAM SURFACE NOT TO BE LAID UNTIL 1934.



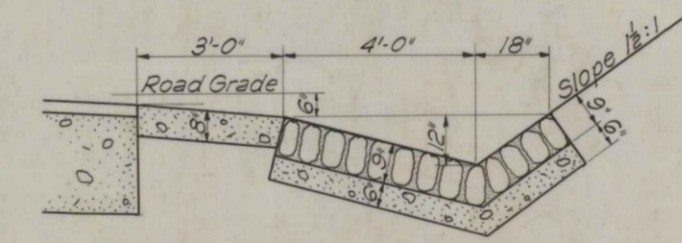
TILE UNDERDRAIN

ITEM	DESCRIPTION	QUANTITY
12 A	Earth Excavation	5232 Cu. Yds.
12 B	Rock Excavation	251.1 Cu. Yds.
12 C	Trees Removed	4 Each
13	Excavation for Structs.	282.5 Cu. Yds.
23	Gravel Base Course	7136.5 Cu. Yds.
31 A	Bituminous Macadam Surface Course	1105 Cu. Yds.
31 B	Emulsified Asphalt Furnished & Applied	37435 Gals.
37 B	Class 'B' Concrete	35.3 Cu. Yds.
38	Steel Reinf. for Conc. Structs.	408 Lbs.
42 B	Furnishing & Laying 15" Corr. Metal Pipe	42 Lin. Ft.
44 C	Furnishing & Laying 18" Reinf. Conc. Pipe	164 Lin. Ft.
44 D	Furnishing & Laying 24" Reinf. Conc. Pipe	72 Lin. Ft.
46 A	Drop Inlets	3 Each
46 B	Catch Basins	— Each
49	Tile Underdrain	130 Lin. Ft.
50	Cobble Stone Gutter	1328.0 Sq. Yds.
52 A	Wire Cable Guard Rail Anchorages	200 Lin. Ft.
		2 Each

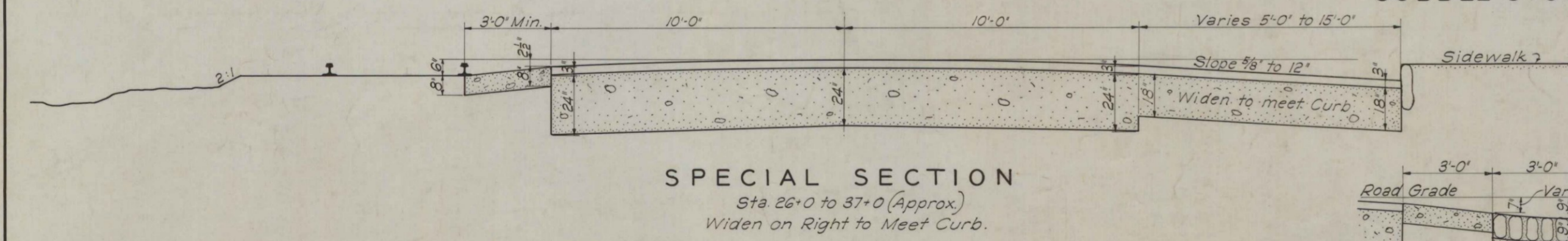


SPECIAL SECTION  
Sta. 6+50 to 10+0

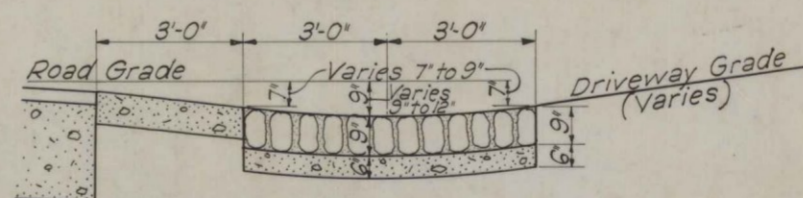
Note: Excess Excavation to be deposited, as directed by Engineer, -- to line and grade on Jacks Hill, in Town of Topsham, approx. 1.1 miles Southeast of Sta. 0+0 of this project. --- No "Overhaul" to be allowed on any excavation on this project.



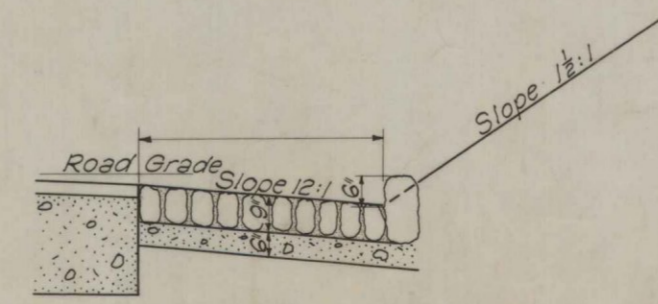
COBBLE STONE GUTTER



SPECIAL SECTION  
Sta. 26+0 to 37+0 (Approx.)  
Widen on Right to Meet Curb.



COBBLE STONE GUTTER  
For Driveways & Side-Roads



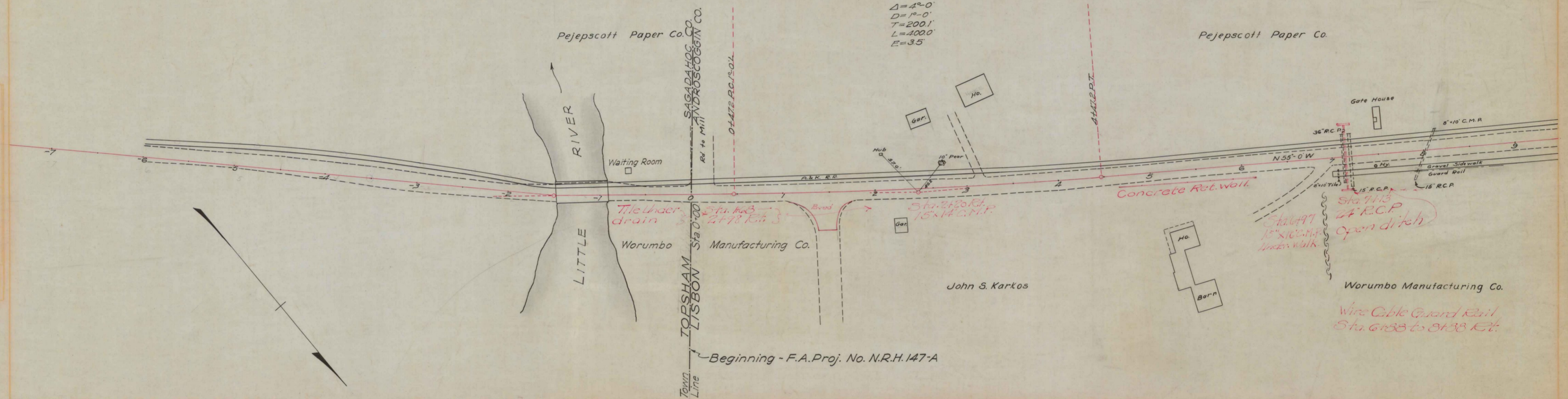
COBBLE STONE GUTTER AND CURB

CULVERT DATA				
STATION	KIND	SIZE	LENGTH	
7+13	E.C.P.	24"	72'	Endwall L-R
15+50	R.C.P.	18"	44'	Endwall Lt. D.I. Right
22+40	E.C.P.	18"	72'	Endwall Lt. D.I. Right
25+29	R.C.P.	18"	48'	Endwall Lt. D.I. Right
DRIVEWAY PIPES				
8+20	C.M.P.	15"	14'	
6+97	C.M.P.	15"	16'	
11+0	C.M.P.	15"	12'	

FED. ROAD DIST. NO.	STATE	FED. AID PROJ. NO.	FISCAL YEAR	SHEET NO.	TOTAL SHEETS
9	MAINE	N.R.H. 147A	1933	3	12

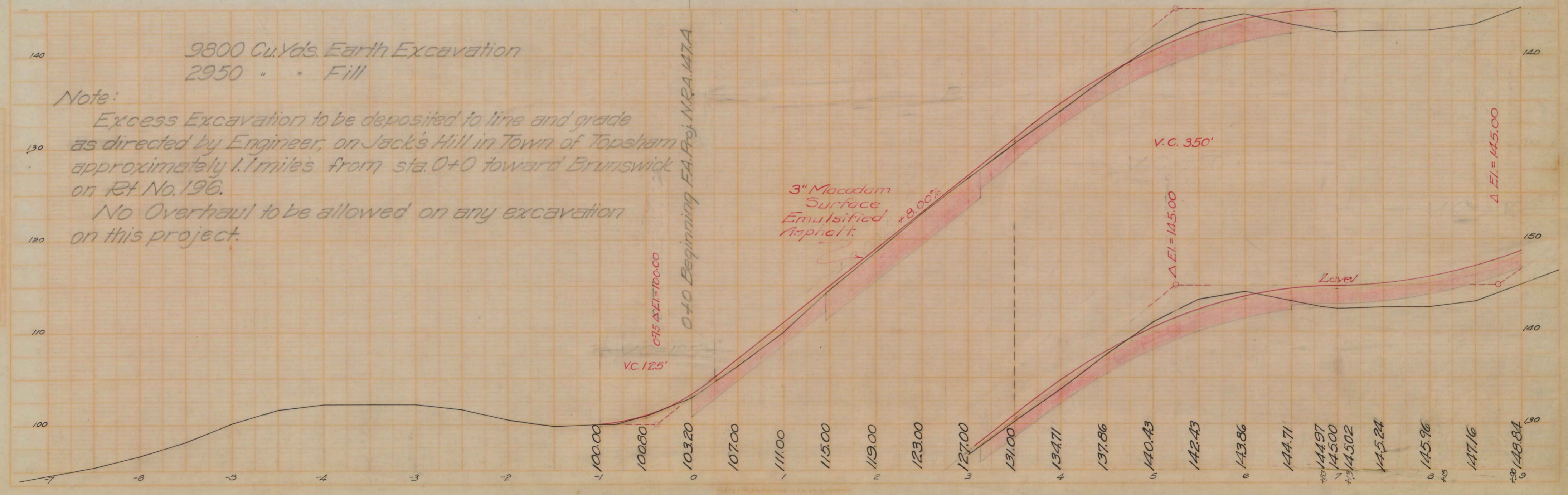
27x50  
26x80

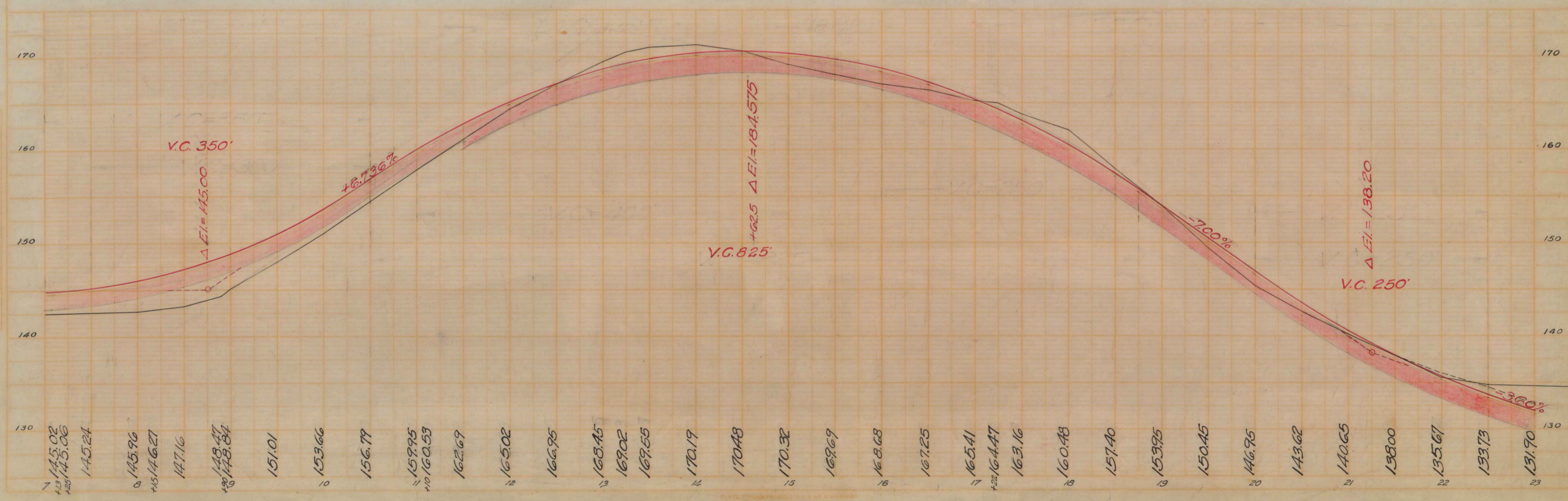
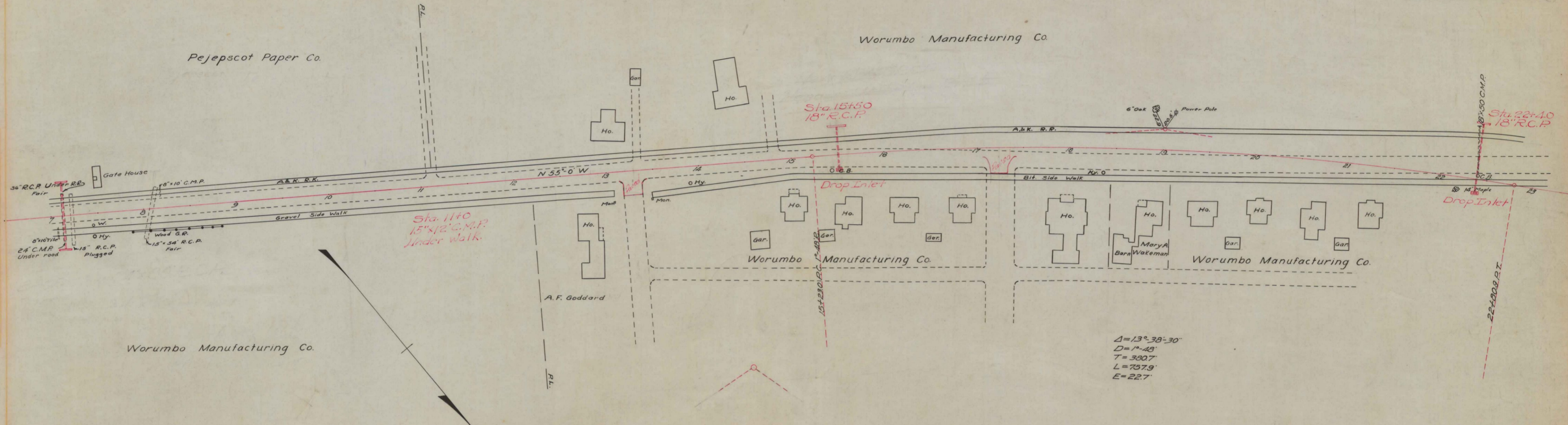
$\Delta = 4^{\circ} - 0'$   
 $D = 10 - 0'$   
 $T = 200.1'$   
 $L = 400.0'$   
 $E = 35'$

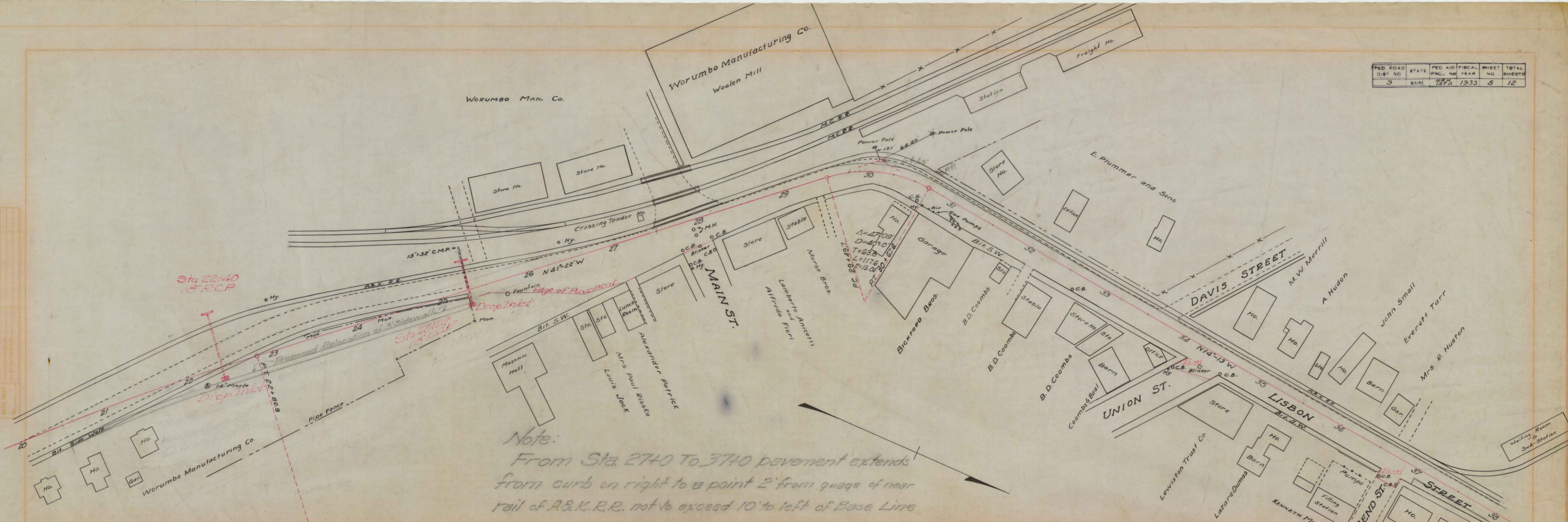


9800 Cu. Yds. Earth Excavation  
 2950 " " " " Fill

Note:  
 Excess Excavation to be deposited to line and grade as directed by Engineer, on Jack's Hill in Town of Topsham approximately 1.1 miles from sta. 0+0 toward Brunswick on Rt. No. 196.  
 No Overhaul to be allowed on any excavation on this project.



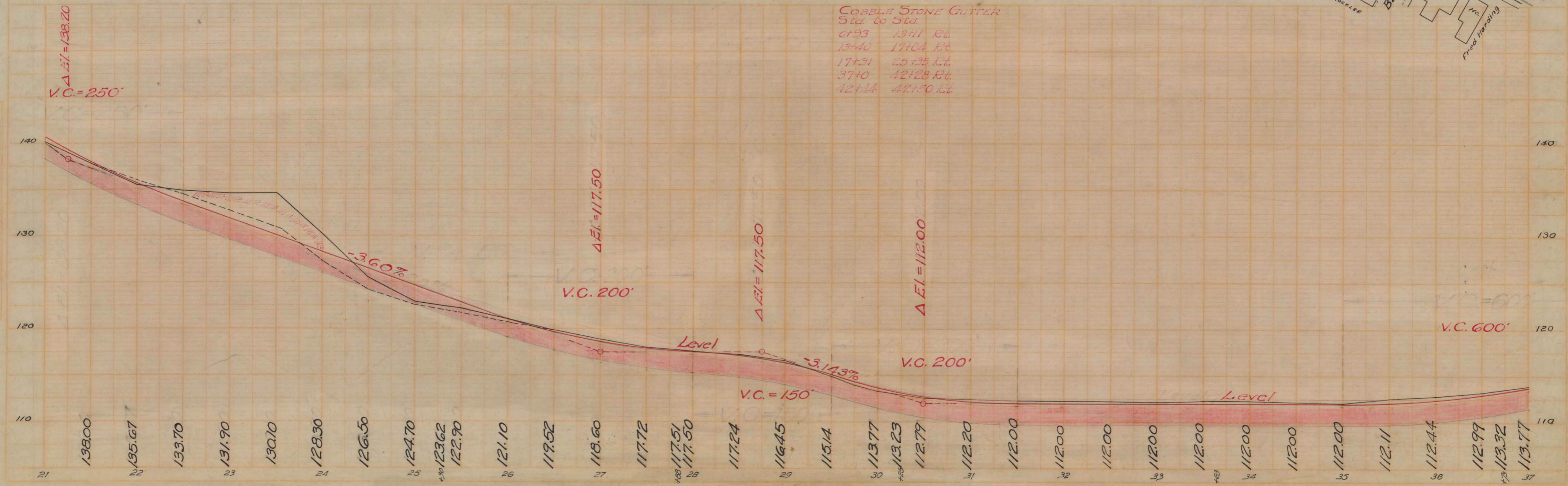




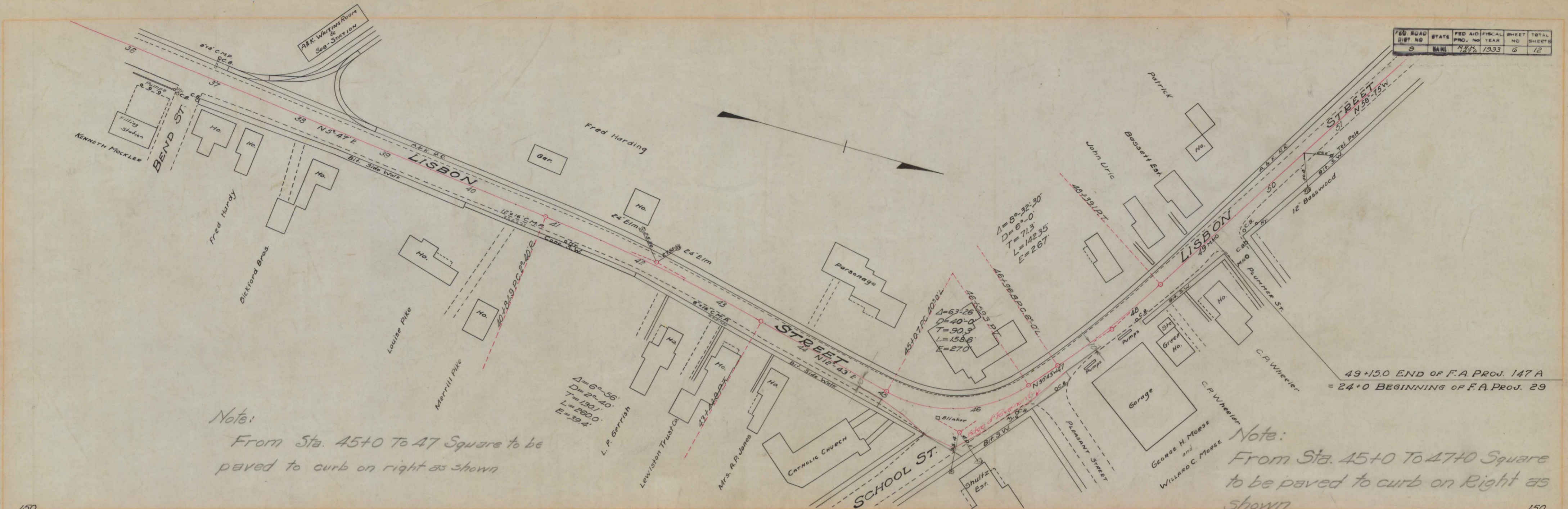
Note:  
 From Sta. 27+0 To 37+0 pavement extends from curb on right to a point 2' from grade of near rail of A&K.R.R. not to exceed 10' to left of Base Line

COBBLE STONE GUTTER  
 Sta. to Sta.

6+93	13+11	Rt.
13+40	17+04	Rt.
17+31	25+35	Lt.
37+0	42+28	Rt.
42+14	42+50	Lt.



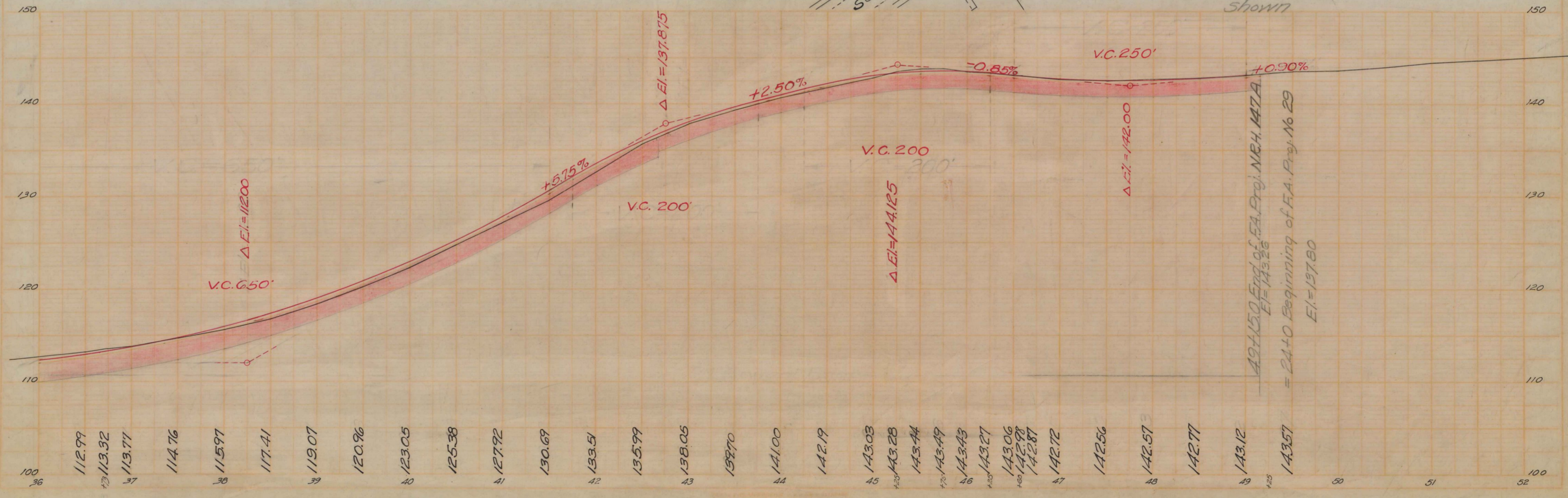
FED. ROAD DIST. NO.	STATE	FED. AID PROJ. NO.	FISCAL YEAR	SHEET NO.	TOTAL SHEETS
3	MAINE	737A	1933	6	12



Note:  
From Sta. 45+0 To 47 Square to be paved to curb on right as shown

Note:  
From Sta. 45+0 To 47+0 Square to be paved to curb on Right as shown

49+15.0 END OF F.A. PROJ. 147A  
= 24+0 BEGINNING OF F.A. PROJ. 29



49+15.0 End of F.A. Proj. NEH 147A  
E.I. = 143.26  
= 24+0 Beginning of F.A. Proj. No 29  
E.I. = 137.80

- 100 36
- 112.99
- 113.32
- 113.71
- 114.76
- 115.97
- 117.41
- 119.07
- 120.96
- 123.05
- 125.38
- 127.92
- 130.69
- 133.51
- 135.99
- 138.06
- 139.70
- 141.00
- 142.19
- 143.03
- 143.28
- 143.44
- 143.49
- 143.43
- 143.27
- 143.06
- 142.98
- 142.87
- 142.72
- 142.56
- 142.57
- 142.77
- 143.12
- 143.57
- 50
- 51
- 100 52