

FED. ROAD DIST. NO.	STATE	PROJ. NO.	FISCAL YEAR	SHEET NO.	TOTAL SHEETS
9	MAINE	W.P.S.S. 174-C		1	9

STATE OF MAINE
STATE HIGHWAY COMMISSION

PLAN AND PROFILE
STATE HIGHWAY "K-3"

CARIBOU

AROOSTOOK COUNTY

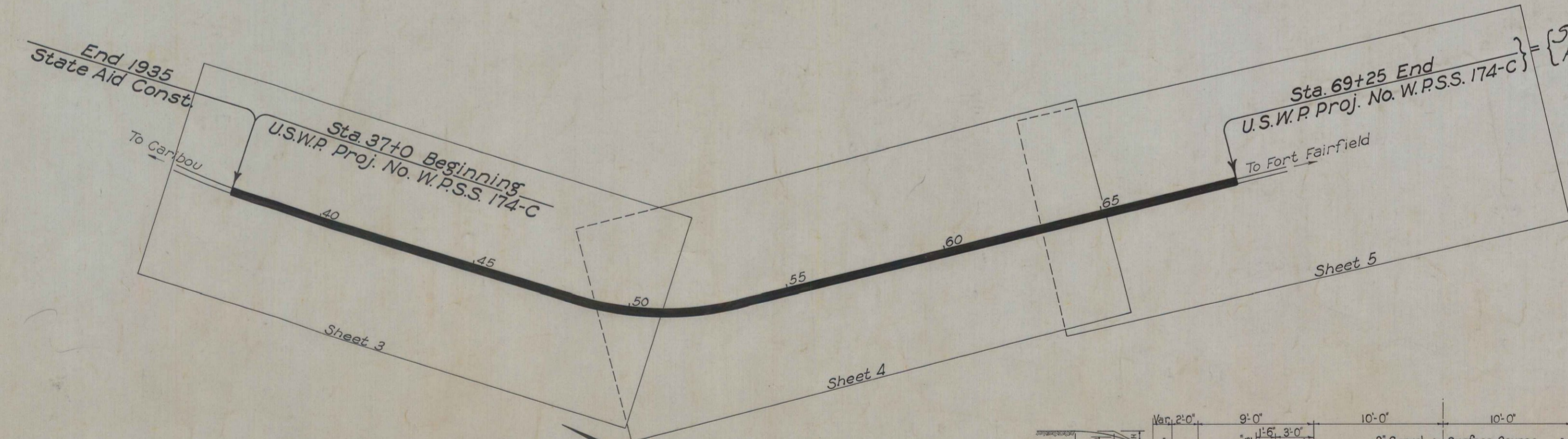
U. S. WORKS PROGRAM HIGHWAY PROJECT NO. W.P.S.S. 174-C

TOTAL LENGTH 0.610 MILES

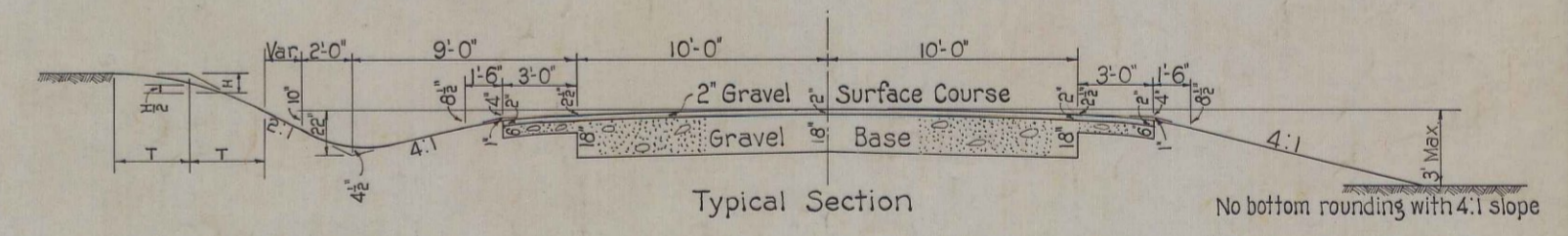
SCALES { PLAN 1 IN. = 50 FT.
PROFILE { HOR. 1 IN. = 50 FT.
VER. 1 IN. = 5 FT.
CROSS SECTIONS 1 IN. = 5 FT.

CONVENTIONAL SIGNS	
STATE OR NATIONAL LINE	-----
COUNTY LINE	-----
TOWN LINE	-----
UNFENCED PROPERTY	-----
FENCE	-----
RIGHT OF WAY LINE	-----
TRAVELED WAY	-----
RAILROAD	-----
RETAINING WALL	-----
SURVEY LINE	-----
CULVERT	-----
DROP INLET	-----
TROLLEY POLE	-----
POWER POLE	-----
TEL. POLE	-----
MARSH	-----
TREES	-----
STONE WALL	-----

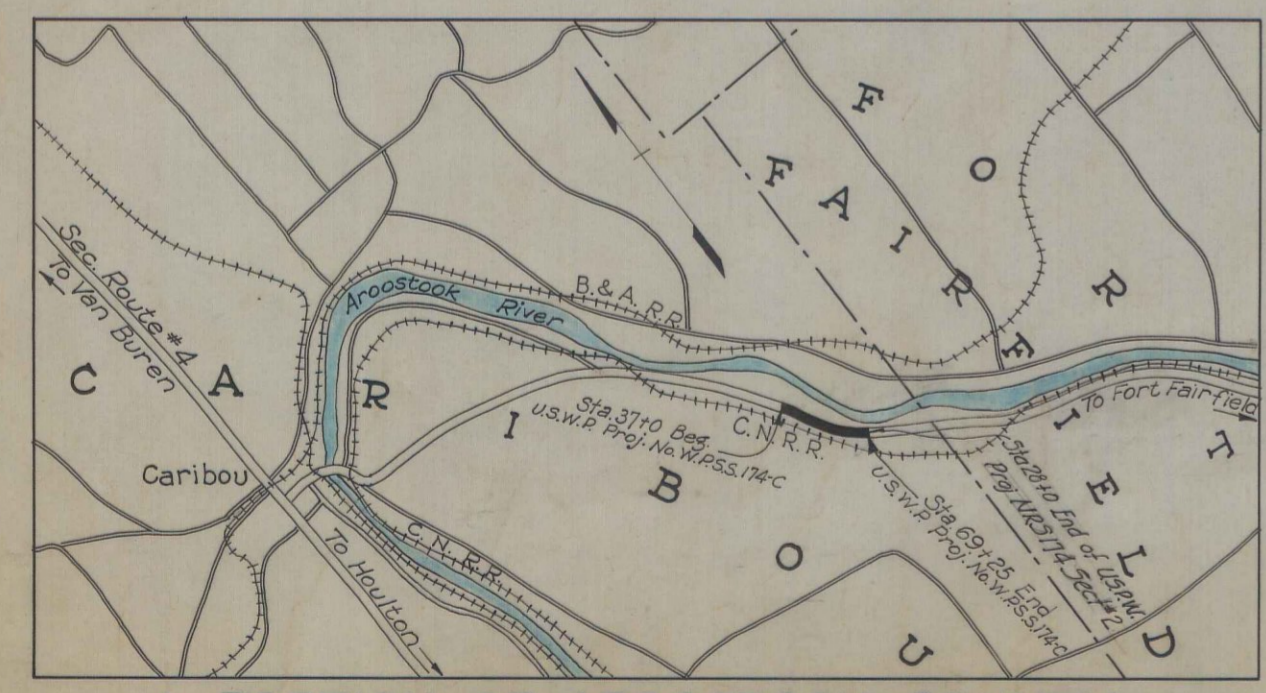
INDEX OF SHEETS		
SHEET No. 1	TITLE PAGE	STA. 37+0 to 69+25
SHEET No. 2	TYPICAL SECTIONS	
SHEET No. 3-5	PLAN AND PROFILE	STA. 37+0 to 69+25
SHEET No. 6-8	CROSS-SECTIONS	STA. 37+0 to 69+25
SHEET No.	BRIDGES	STA.
SHEET No. 9	SPECIAL DETAILS	



Sta. 28+0 End of U.S.P.W. Proj. N.R.S. 174 Section #2



LAYOUT
Scale 1 in. = 200 ft.



A PORTION OF AROOSTOOK COUNTY
Approx. Scale 1 in. = 1 mi.

All work contemplated under this contract to be governed by and in conformity with the specifications adopted Sept. 20, 1935, except as modified on these plans.

APPROVED:
MAINE STATE HIGHWAY COMMISSION

Paul C. Thurston
CHAIRMAN

Sherrill

Richard D. ...
CHIEF ENGINEER

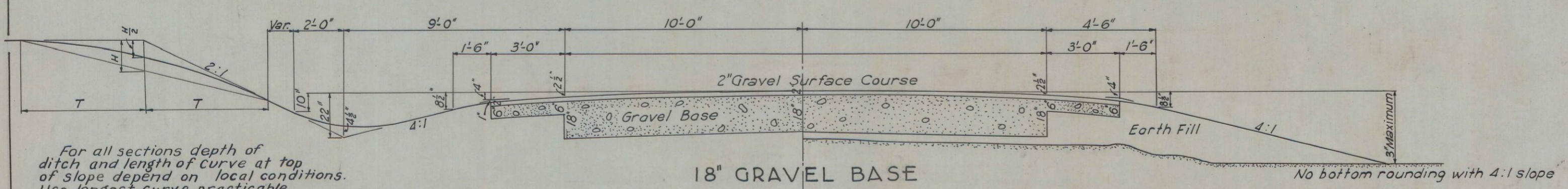
APPROVED:
U. S. BUREAU OF PUBLIC ROADS

DISTRICT ENGINEER

CHIEF ENGINEER

DIRECTOR

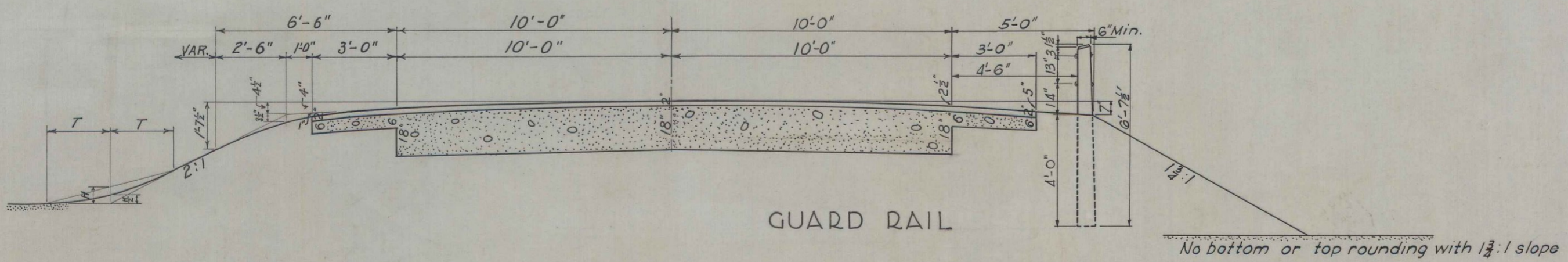
GRAVEL SURFACE COURSE



For all sections depth of ditch and length of curve at top of slope depend on local conditions. Use longest curve practicable, T being 2 ft. min and 5 ft. max.

Depth of bases as shown may be changed to meet local conditions.

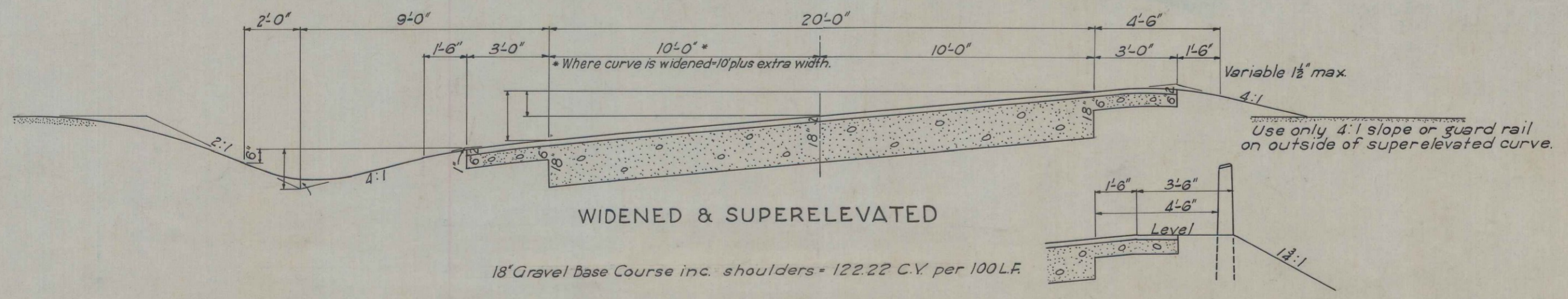
2" Gravel Surface Course including shoulders = 16.05 C.Y. per 100 Lin. Ft.
 18" Grav. Base Course inc. shoulders = 124.79 C.Y. per 100 L.F.



GUARD RAIL

No bottom or top rounding with 1 1/2:1 slope

Where a 2:1 slope is not practicable, use 4:1. Use in cut as shown, but where ditch where needed.



WIDENED & SUPERELEVATED

18" Gravel Base Course inc. shoulders = 122.22 C.Y. per 100 L.F.

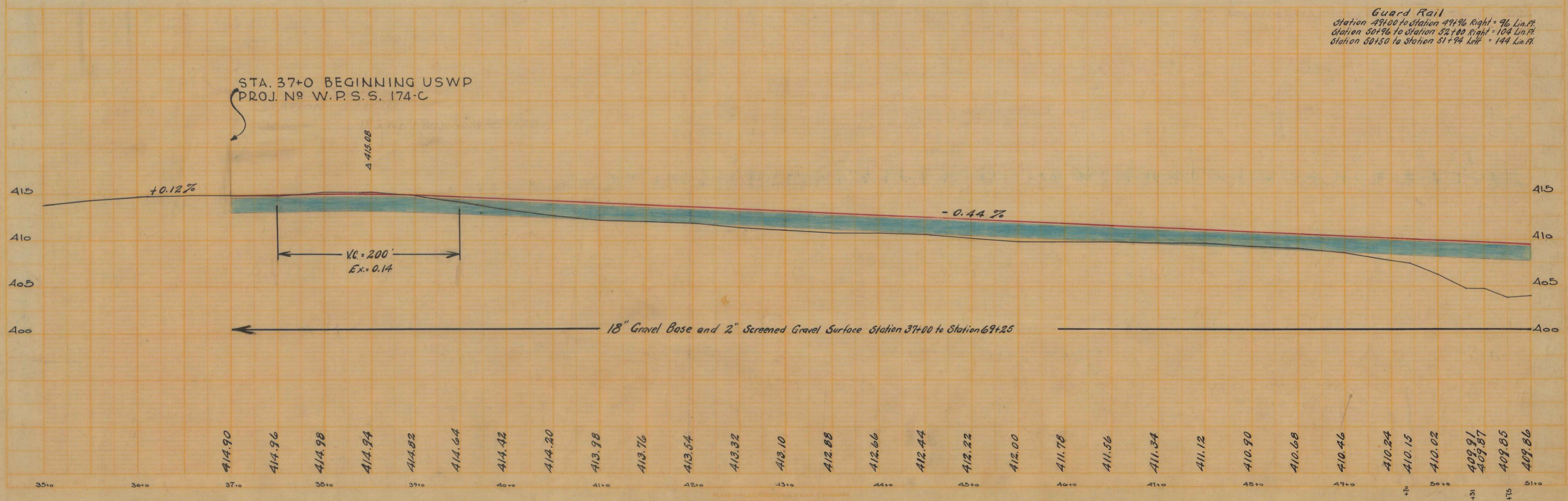
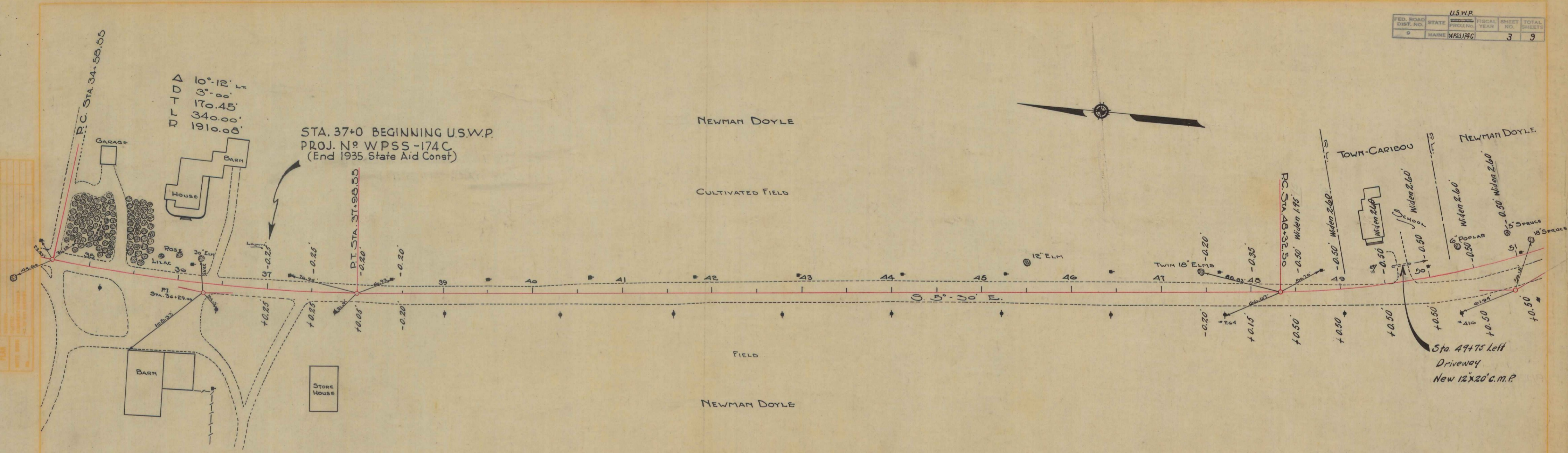
ESTIMATED QUANTITIES

ITEM	DESCRIPTION	QUANTITY
11	Clearing & Grubbing	0.2 Acres
12A	Earth Excavation	2585 C.Y.
13	Excavation for Structures	35 C.Y.
17A	Common Borrow	3050 C.Y.
23	Gravel Base Course	4070 C.Y.
27	Gravel Surface Course	525 C.Y.
35A	Class 'A' Concrete	295 C.Y.
35B	Class 'B' Concrete	305 C.Y.
36	Steel Reinforcement	3117 C.Y.
38	Cement Rubble Masonry	5 C.Y.
40A	12" Corrugated Metal Pipe	130 L.F.
41C	18" Asphalt-Coated Cor. Metal Pipe	88 L.F.
51A	Wire Cable Guard Rail	406 L.F.
51B	Anchorage for Wire Cable Guard Rail	4 Each

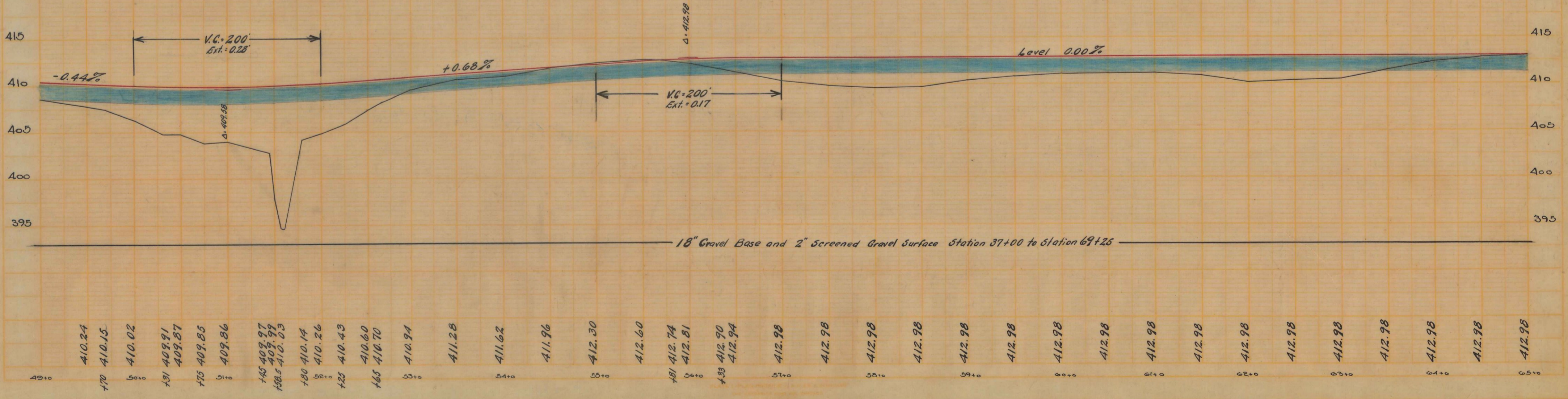
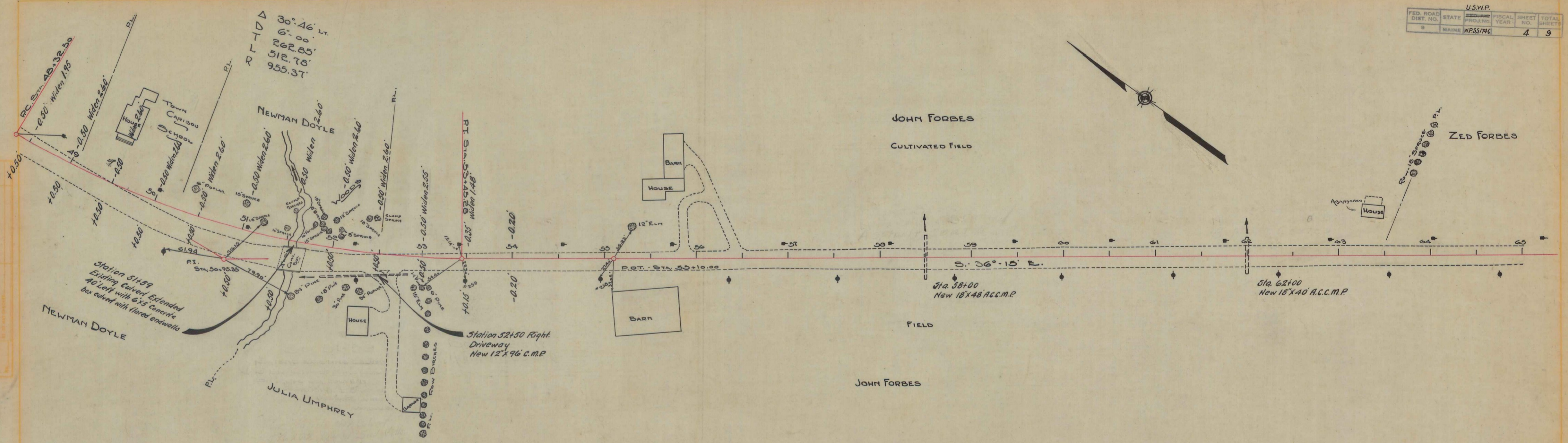
CULVERTS

STA.	SIZE	KIND	DESCRIPTION
49+75	12"x20'	C.M.P.	Drive Lt.
51+59	6"x5'	Conc.Box	Extension Lt.
52+60	12"x50'	C.M.P.	Drive Rt.
58+0	18"x48'	C.M.P.	Asphalt Coated
62+0	18"x40'	C.M.P.	Asphalt Coated
67+70	12"x20'	C.M.P.	Drive Lt.
67+40	12"x20'	C.M.P.	Drive Rt.
68+40	12"x20'	C.M.P.	Drive Lt.

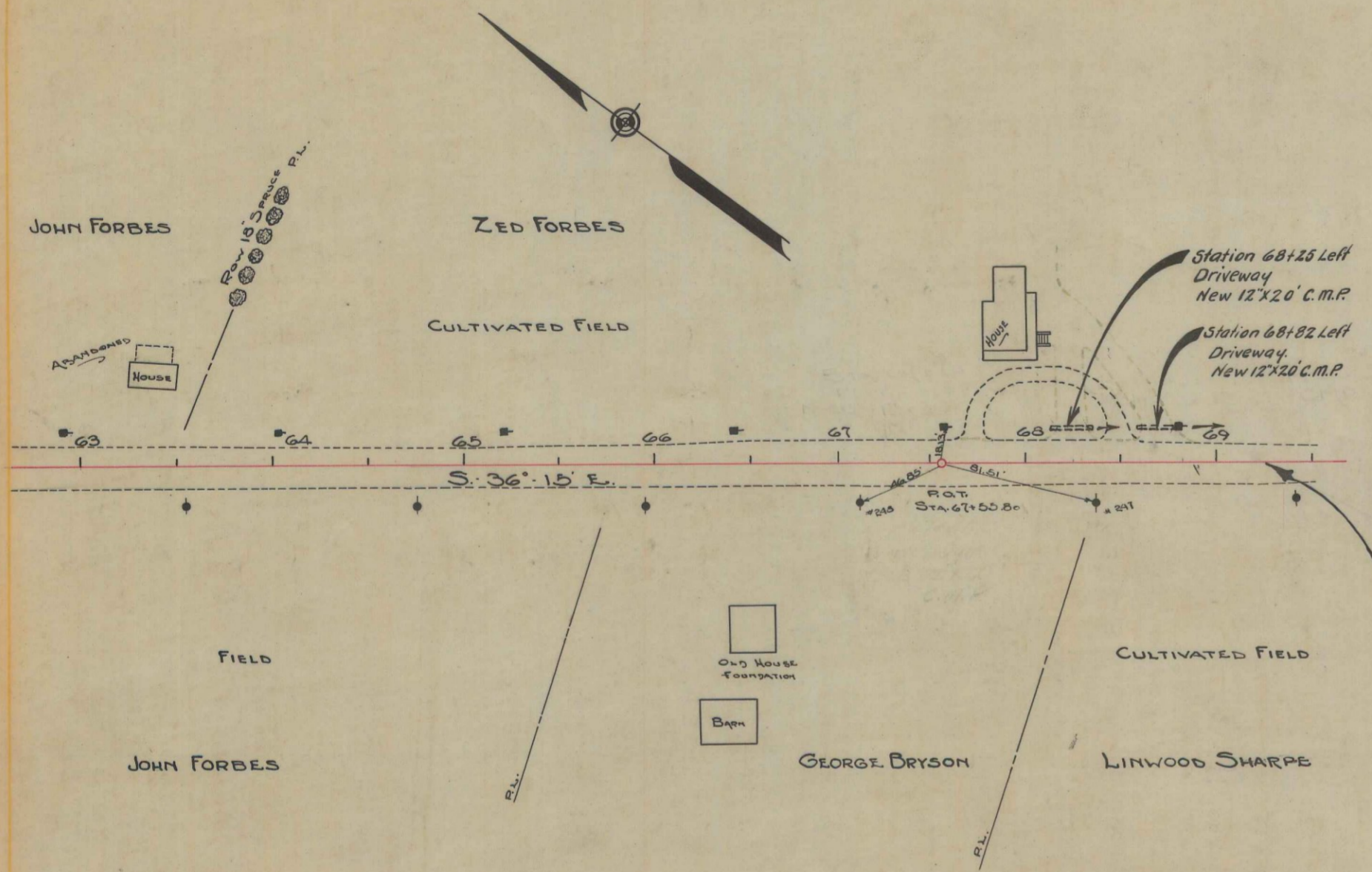
Curves of 2° or more shall be superelevated "B", the full bank for 20 ft. width, equals 2 times "D", the degree of curve, with a minimum of 5' super-elevation. Maximum bank shall not exceed 1 inch per foot width of pavement.
 All curves shall have full super-elevation at approximately the P.C. and R.T. of the curve with a transition of 150 ft. unless otherwise specified.
 Curves of 6° or more shall be widened. The extra width expressed in feet is given by formula $\frac{D}{2} + 2$.
 Widening and super-elevating may be limited by unusual conditions.



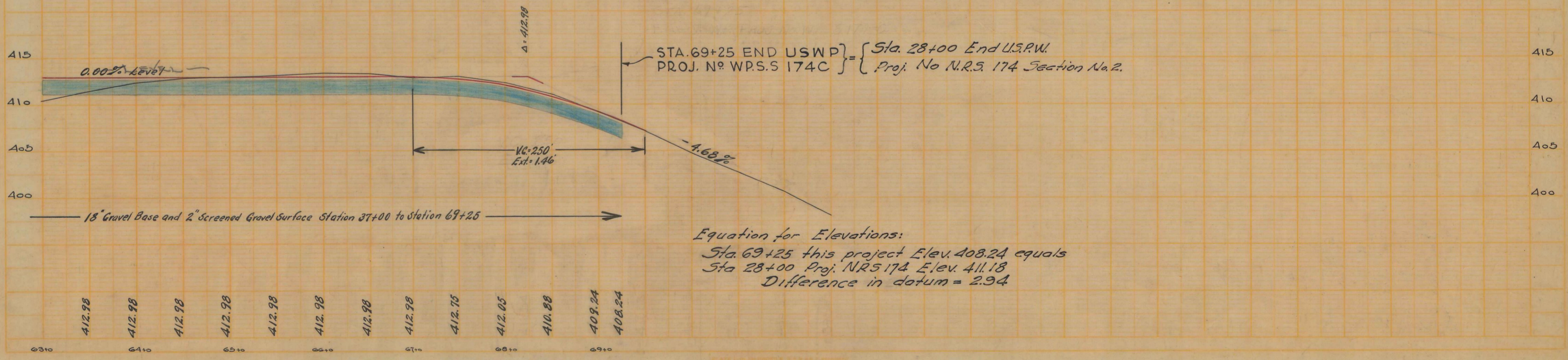
U.S.W.P.				
FED. ROAD DIST. NO.	STATE	FISCAL YEAR	SHEET NO.	TOTAL SHEETS
9	MAINE	1955/56	4	9



FED. ROAD DIST. NO.		STATE	U.S.W.P.		FISCAL YEAR	SHEET NO.	TOTAL SHEETS
9		MAINE	W.P.S.S. 174-C			5	9



STA. 69+25 END U.S.W.P. = { Sta 28+00 End U.S.P.W.
 PROJ. N° W.P.S.S. 174C } = { Proj. No. N.R.S. 174 Section No. 2.



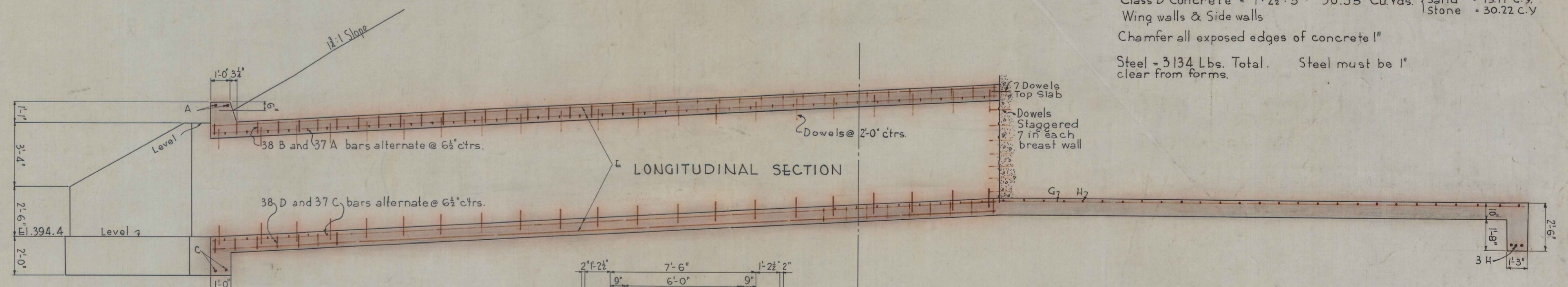
STA. 69+25 END USWP = { Sta. 28+00 End U.S.P.W.
 PROJ. N° W.P.S.S. 174C } = { Proj. No. N.R.S. 174 Section No. 2.

Equation for Elevations:
 Sta. 69+25 this project Elev. 408.24 equals
 Sta 28+00 Proj. NRS 174 Elev. 411.18
 Difference in datum = 2.94

63+0	412.98	64+0	412.98	65+0	412.98	66+0	412.98	67+0	412.98	68+0	412.75	412.05	410.88	408.24	408.24
------	--------	------	--------	------	--------	------	--------	------	--------	------	--------	--------	--------	--------	--------

Class 'A' Concrete = 1:2:4 = 29.36 Cu. Yds. (Cement = 42.17 Bbls. Sand = 11.82 C.Y. Stone = 23.64 C.Y.)
 Top & Bottom Slabs, Curb and baffle walls
 (25 cu. yds. Allowed for underpinning existing footings)
 Class 'B' Concrete = 1:2½:5 = 30.35 Cu. Yds. (Cement = 51.57 Bbls. Sand = 15.11 C.Y. Stone = 30.22 C.Y.)
 Wing walls & Side walls
 Chamfer all exposed edges of concrete 1"

Steel = 3134 Lbs. Total. Steel must be 1" clear from forms.



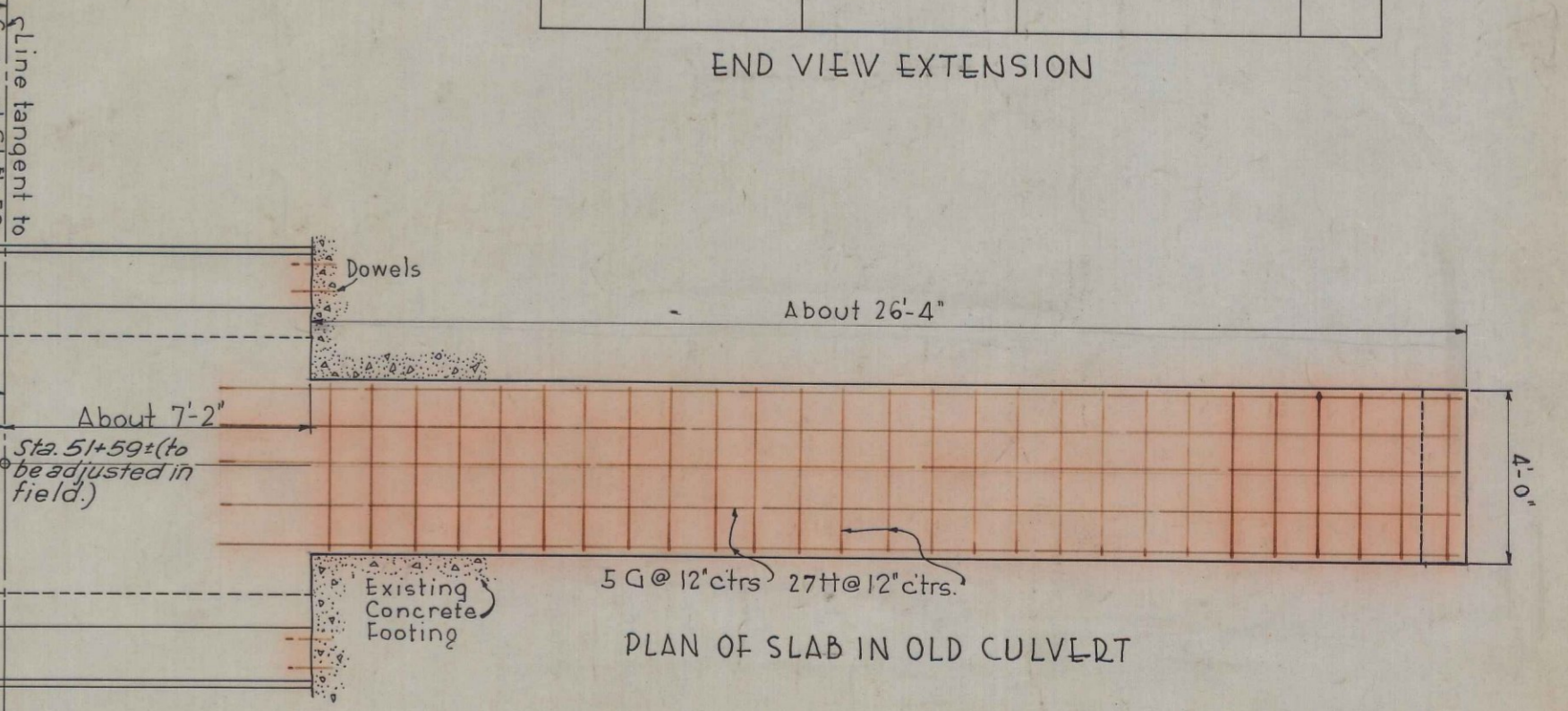
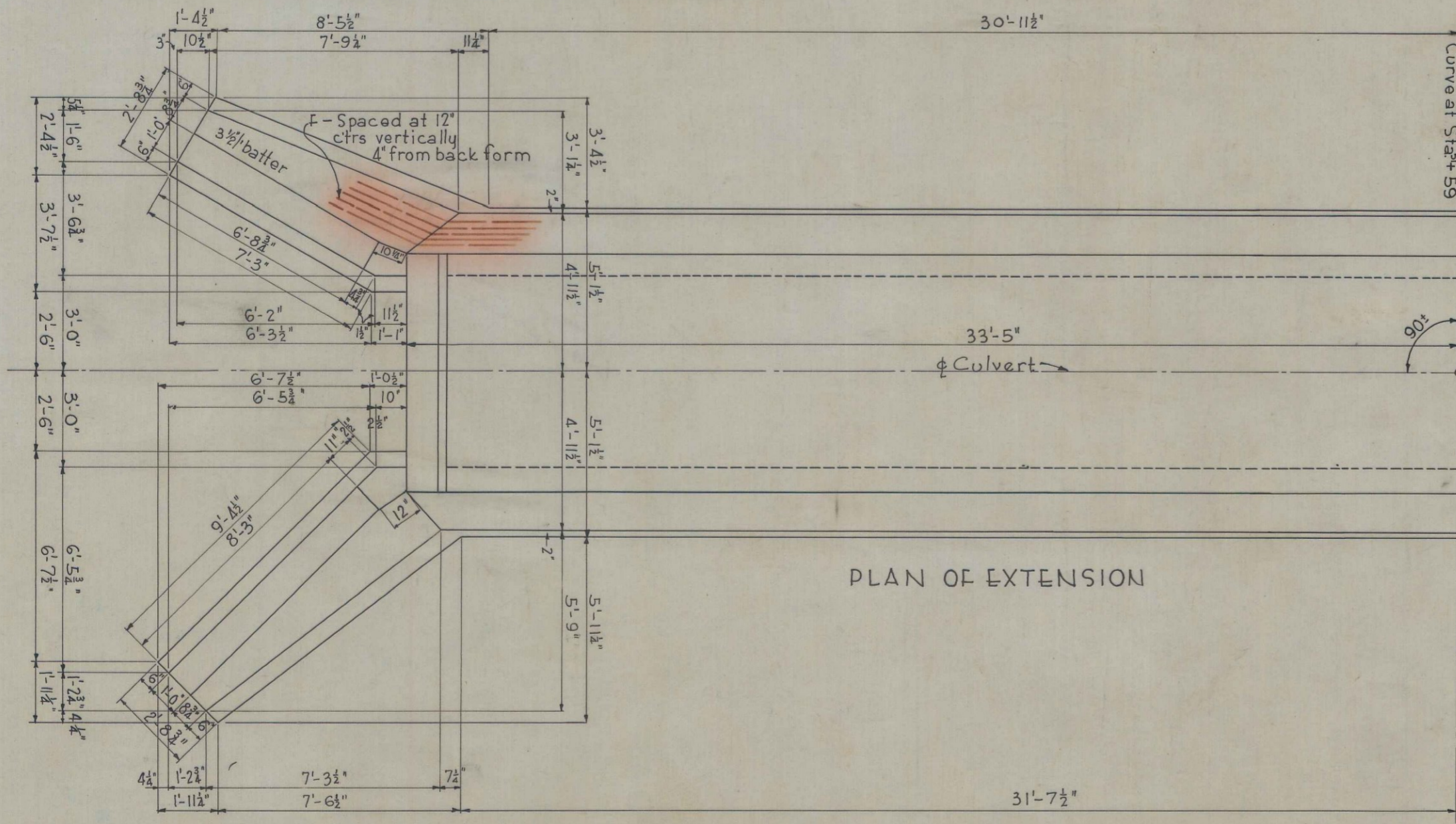
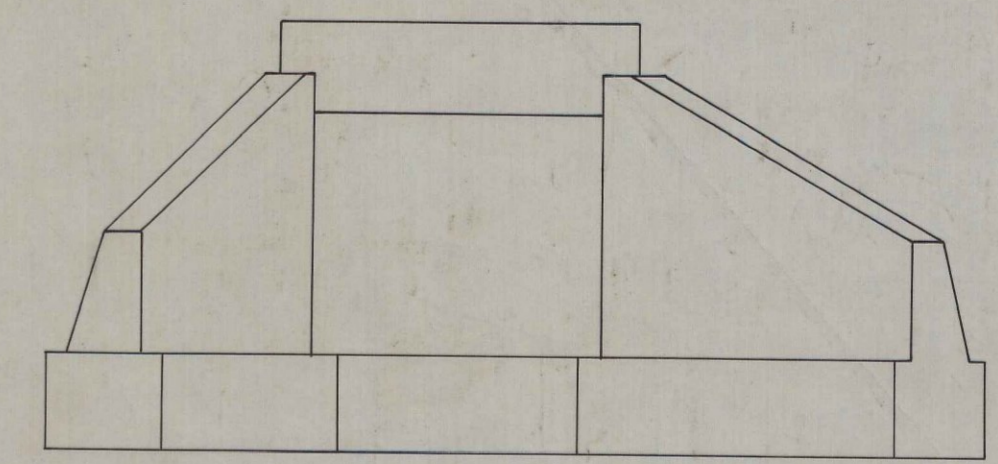
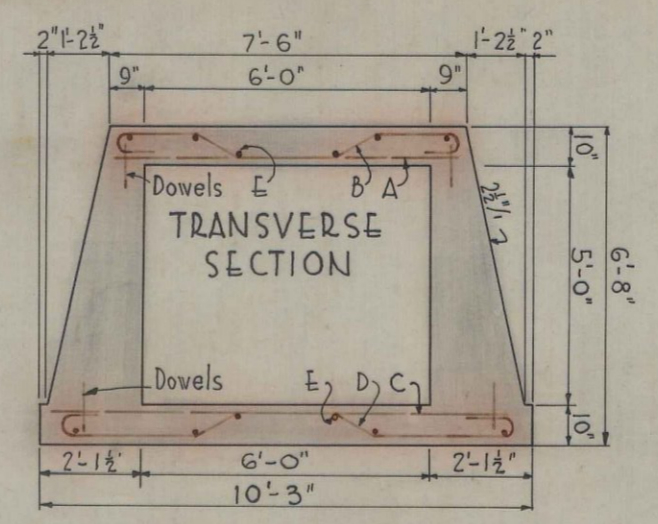
STEEL SCHEDULE

BENT BARS

B 3/4" φ Total Length = 9'-8" 38 Required
 D 3/4" φ Total Length = 12'-0" 38 Required

STRAIGHT BARS

Mark	Size	No. Rods	Length	Location	Mark	Size	No. Rods	Length	Location
A	3/4" φ	37	7'-3"	Top Slab	G	5/8" φ	5	28'-8"	Slab in old Culvert
C	3/4" φ	37	10'-0"	Bottom Slab	H	5/8" φ	30	3'-8"	"
F	5/8" φ	12	40'-3"	Top & Bottom Slab	Dowels	5/8" φ	105	1'-0"	Slab-Breast-wall
F	5/8" φ	10	6'-0"	Wings					Breast-wall to Old Head Wall



MAINE STATE HIGHWAY COMMISSION
 DETAILS OF
 REINFORCED CONCRETE
 BOX CULVERT EXTENSION
 STA. 51+59
 CARIBOU - PROJ. NO. WPS 174-C
 Scale 3/8" = 1'
 Oct. 1935
 Drawn by - Linscott
 Check by -