

WELLS - SANFORD

STATE OF MAINE
STATE HIGHWAY COMMISSION

PLAN AND PROFILE
STATE HIGHWAY "A-2"

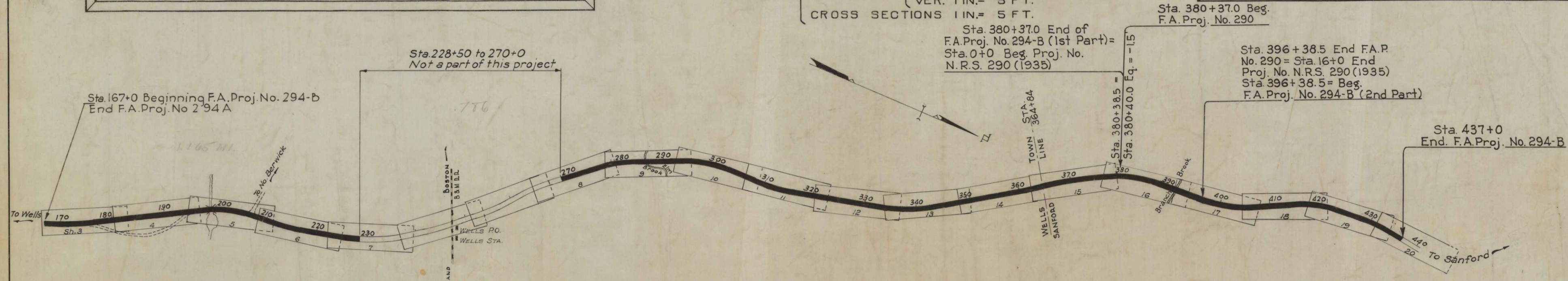
WELLS-SANFORD
YORK COUNTY
FEDERAL AID PROJECTS NO. 290 AND 294-B
TOTAL LENGTH F.A.P. NO. 290 = 0.303 MILES
TOTAL LENGTH F.A.P. NO. 294-B = 4.024 MILES
SCALES { PLAN 1 IN. = 50 FT. 4.327
 { PROFILE { HOR. 1 IN. = 50 FT.
 { VER. 1 IN. = 5 FT.
 { CROSS SECTIONS 1 IN. = 5 FT.

CONVENTIONAL SIGNS

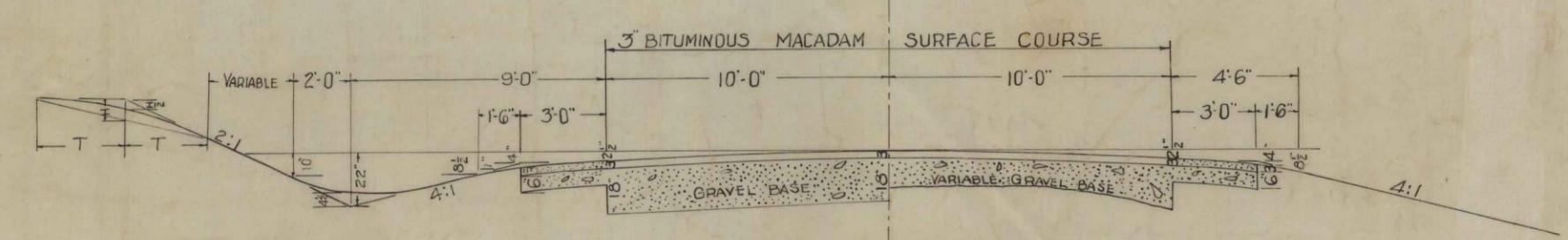
STATE OR NATIONAL LINE	-----	SURVEY LINE	-----
COUNTY LINE	-----	CULVERT	-----
TOWN LINE	-----	DROP INLET	-----
UNFENCED PROPERTY	-----	TROLLEY POLE	-----
FENCE	-----	POWER POLE	-----
RIGHT OF WAY LINE	-----	TEL. POLE	-----
TRAVELED WAY	-----	MARSH	-----
RAILROAD	-----	TREES	-----
RETAINING WALL	-----	STONE WALL	-----

INDEX OF SHEETS

SHEET No.	1	TITLE PAGE	STA. 167+0 TO 437+0
SHEET No.	2	TYPICAL SECTIONS	
SHEET No.	3-20	PLAN AND PROFILE	STA. 167+0 TO 437+0
SHEET No.	21-43	CROSS-SECTIONS	STA. 167+0 TO 437+0
SHEET No.		BRIDGES	STA.
SHEET No.		SPECIAL DETAILS	

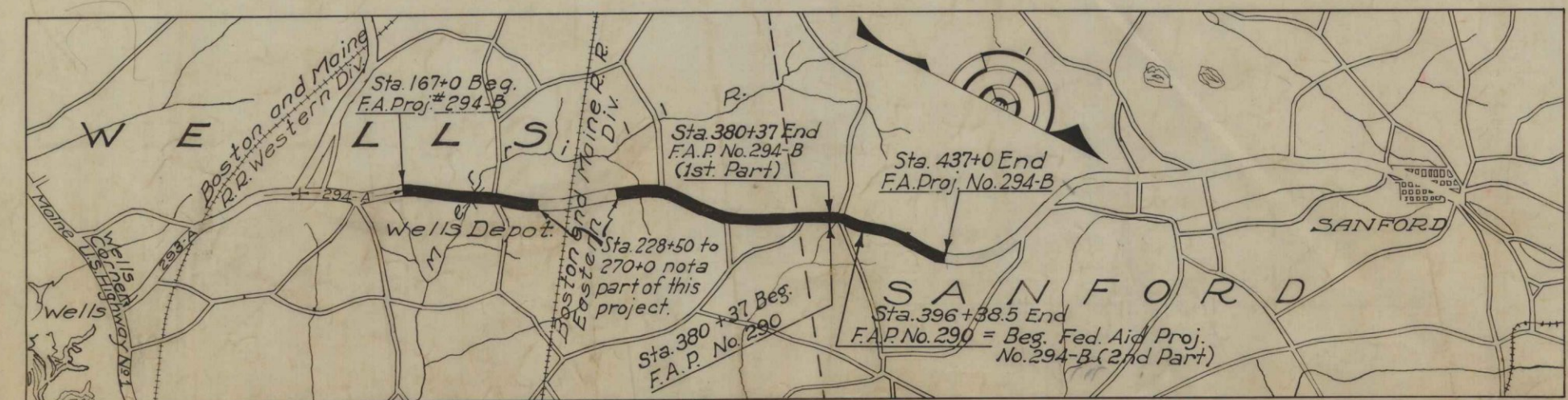


LAYOUT PLAN
Scale 1 inch = 1000 ft.



TYPICAL SECTION
Scale 1 INCH = 5 FEET

All work contemplated under this contract to be governed by and in conformity with the Specifications adopted Sept. 20, 1935, except as modified on these plans.



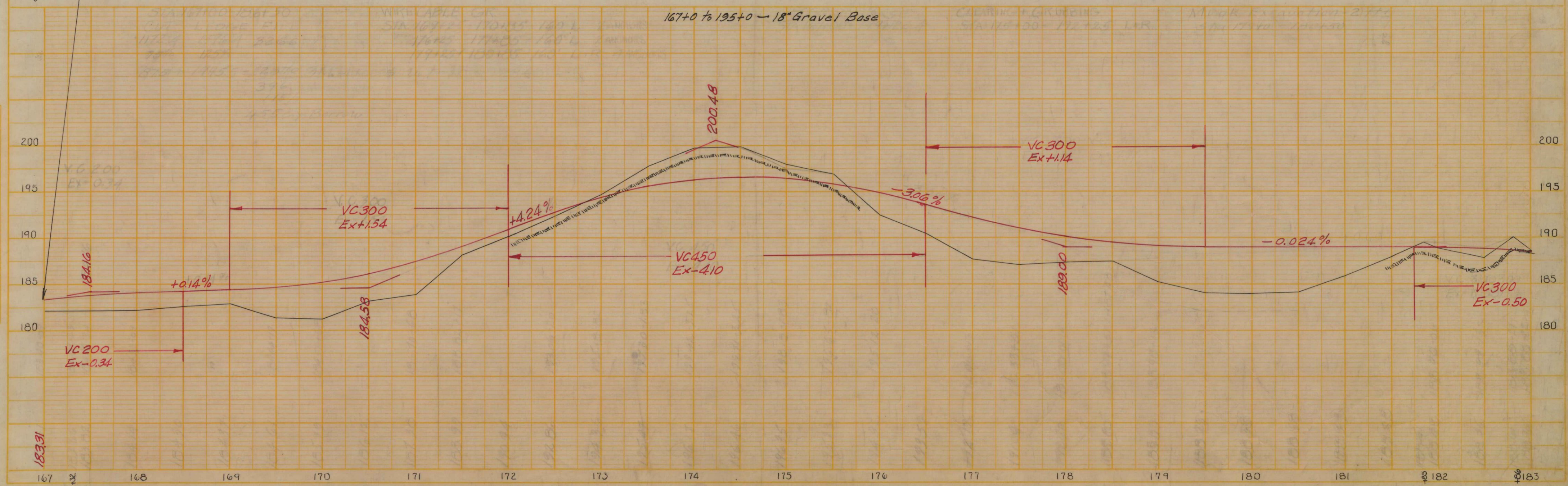
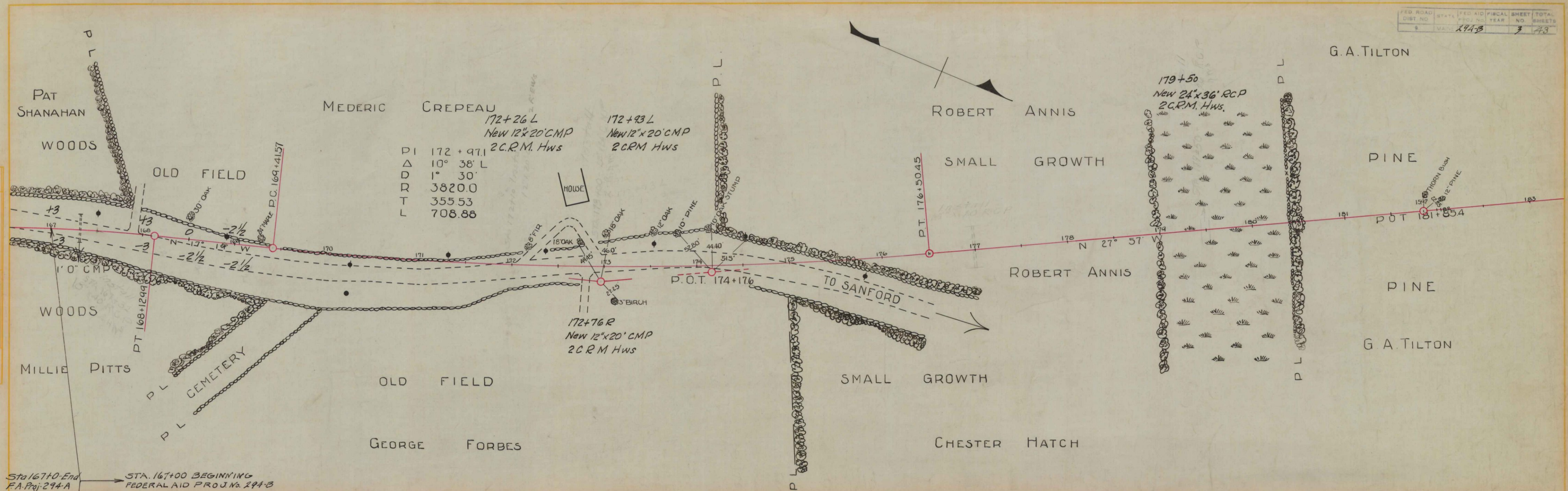
A Portion of York County
approx. scale 1 in. = 1 mile

APPROVED:
MAINE STATE HIGHWAY COMMISSION
Paul C. Cusack
CHAIRMAN
Edward J. ...
CHIEF ENGINEER
Walter D. ...
CHIEF ENGINEER

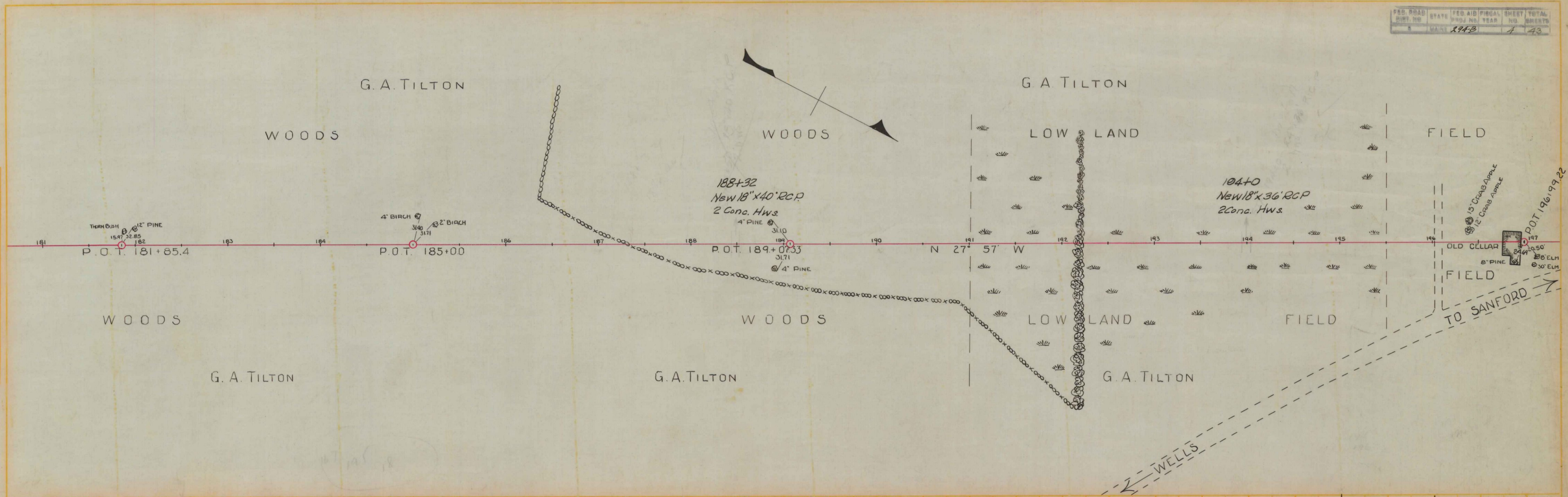
APPROVED:
U. S. BUREAU OF PUBLIC ROADS
[Signature Box]
DISTRICT ENGINEER
[Signature Box]
CHIEF ENGINEER
[Signature Box]
DIRECTOR

E.S. METCALF
 LIBBY L. 35
 FOSTER
 PLAN
 DATE
 NOTE BOOK
 IN ASP-2

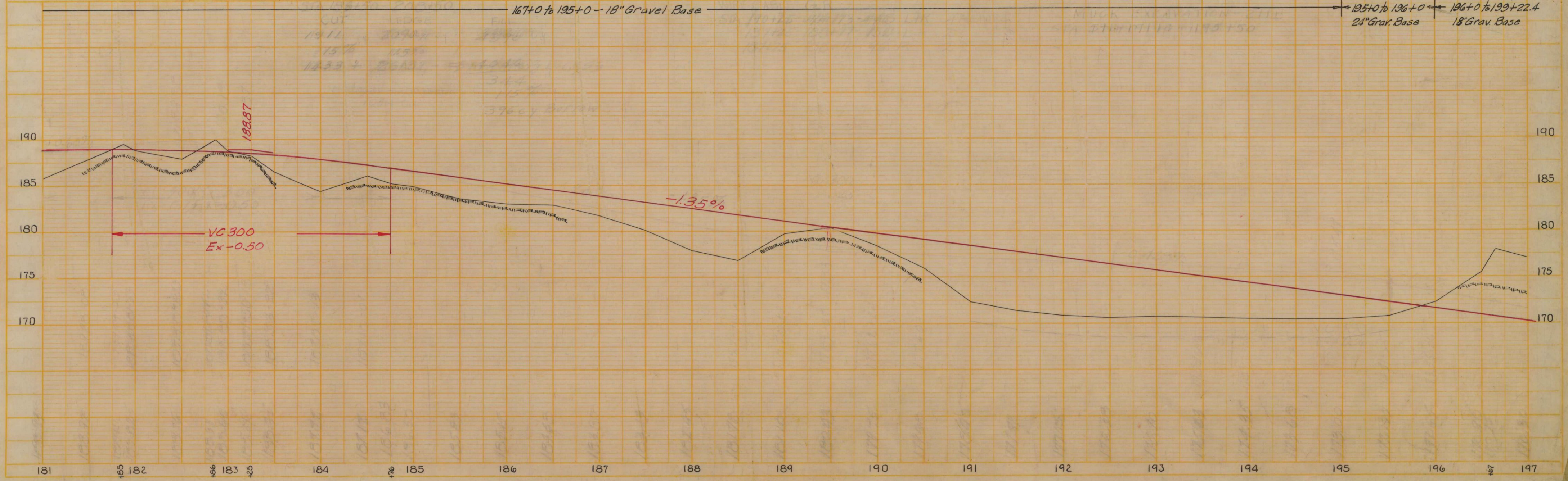
E.S. METCALF
 METCALF
 DATE
 NOTE BOOK
 IN ASP-4



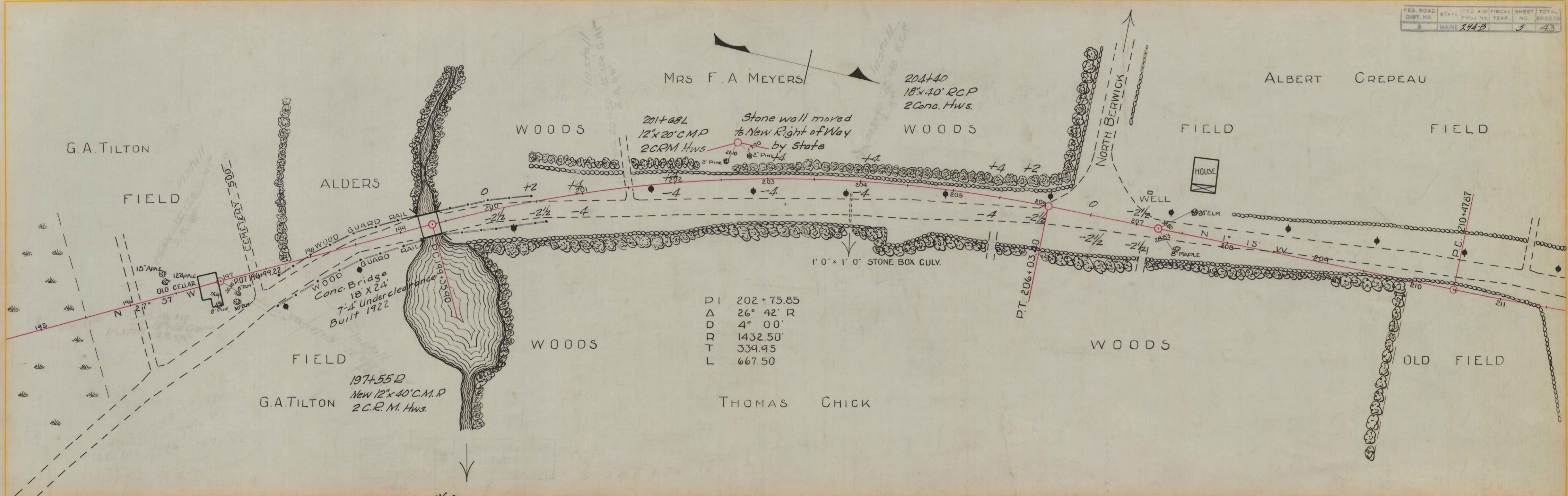
PLAN
 DATE: 10/15/48
 DRAWN BY: E.S. METCALF
 CHECKED BY: FOSTER
 IN: A-332



PROFILE
 DATE: 10/15/48
 DRAWN BY: E.S. METCALF
 CHECKED BY: METCALF
 IN: A-584

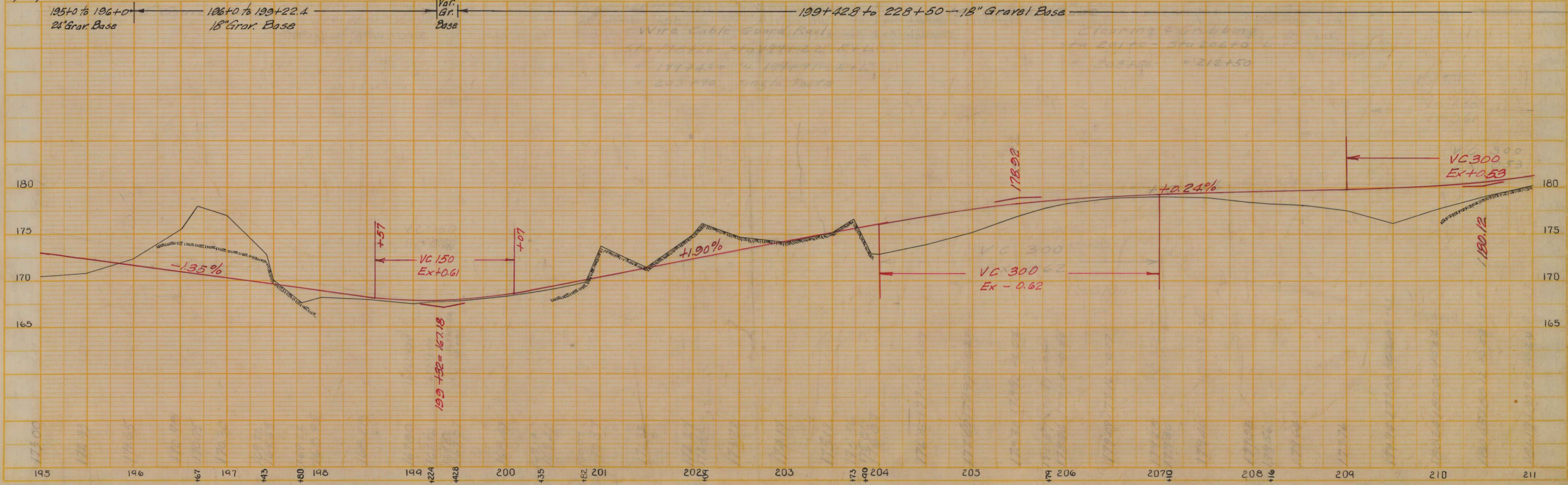


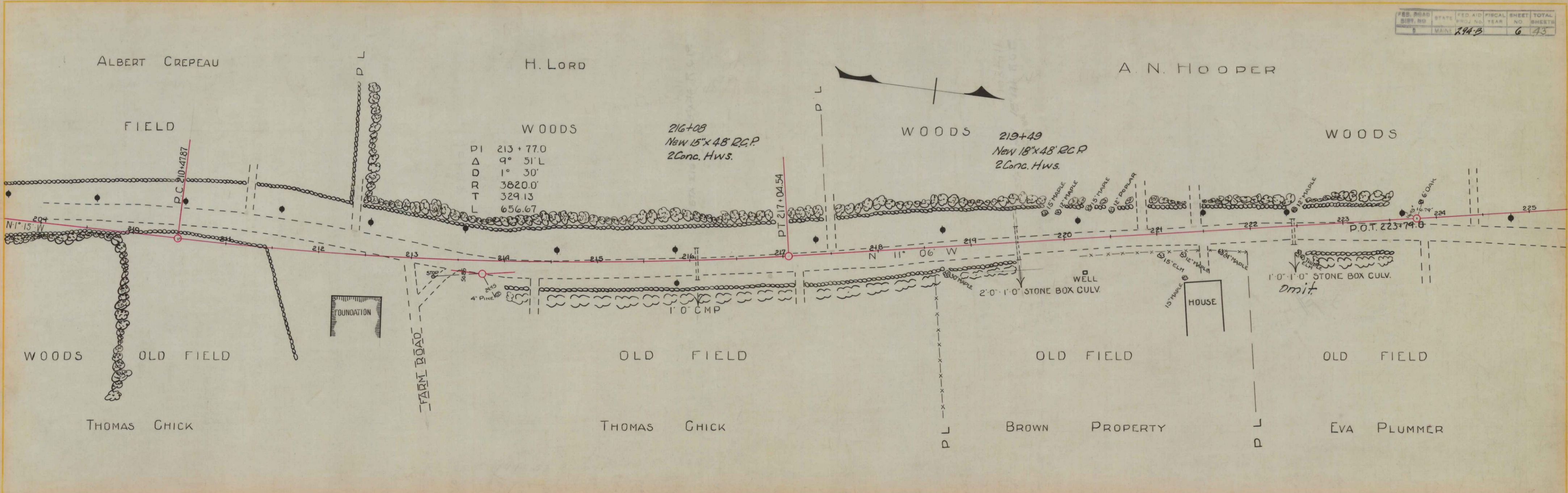
PLAN
 E.S. METCALF
 LIBBY
 POSTER
 12.34
 1.35
 A3p2



DI	202 + 75.85
Δ	26° 42' R
D	4° 00'
R	1432.50'
T	339.95
L	667.50

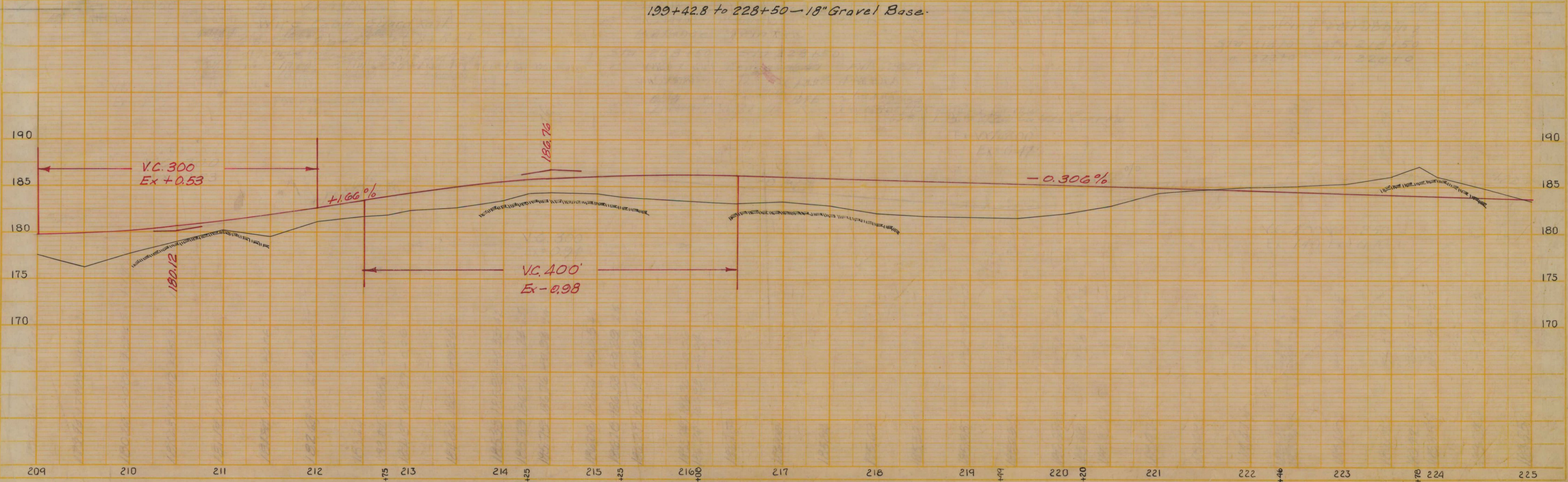
PROFILE
 E.S. METCALF
 POSTER
 12.34
 1.35
 A3p4





PLAN
 E.S. METCALF
 LIBBY
 12 34
 1 35
 MA-A-30-2

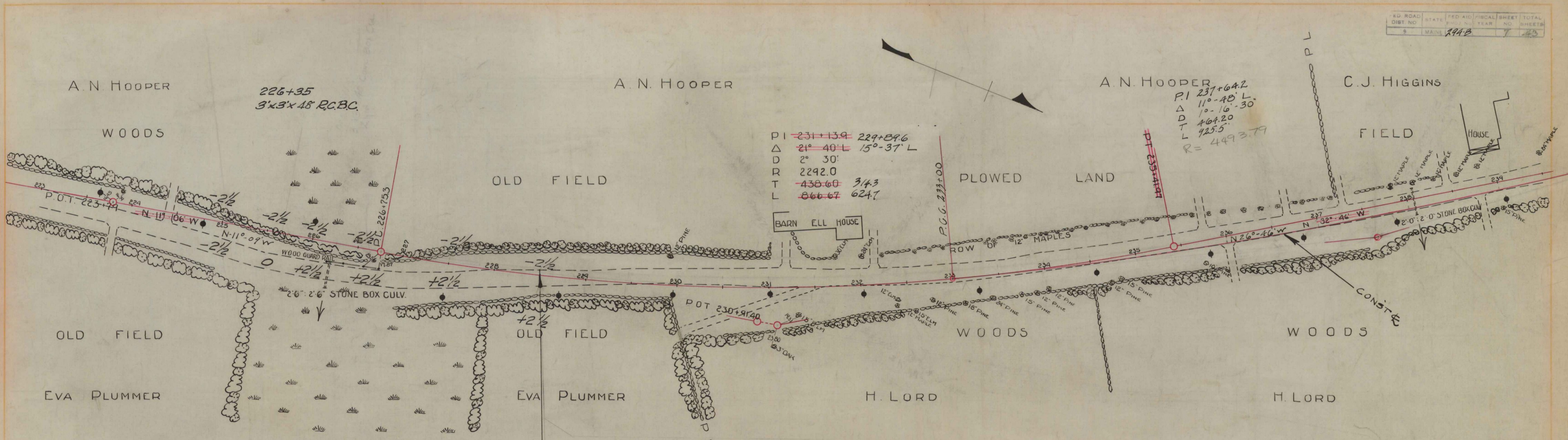
199+42.8 to 228+50 - 18" Gravel Base.



PROFILE
 E.S. METCALF
 METCALF
 12 34
 1 35
 MA-A-30-4

E.S. METCALF 12. 34
 POSTER 1. 35
 A. Sp. 2

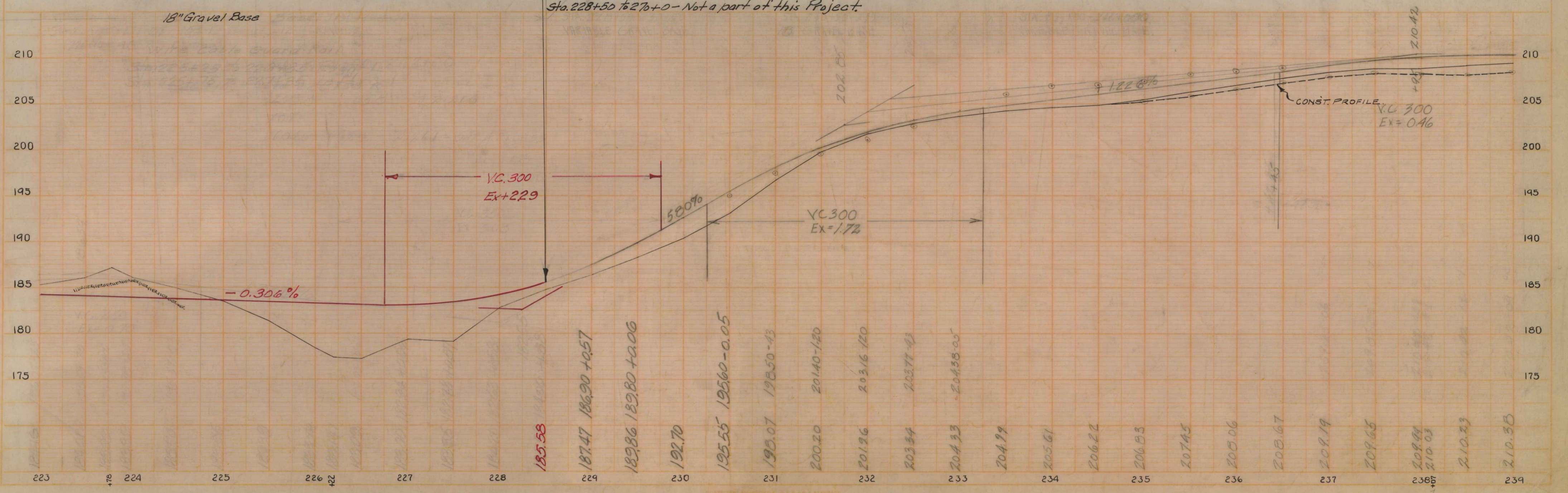
E.S. METCALF 12. 34
 METCALF POSTER 1. 35
 A. Sp. 4



PI ~~231+13.9~~ 229+84.6
 Δ 21° 40' L 15° 37' L
 D 2° 30'
 R 2292.0
 T ~~438.60~~ 314.3
 L ~~866.67~~ 624.7

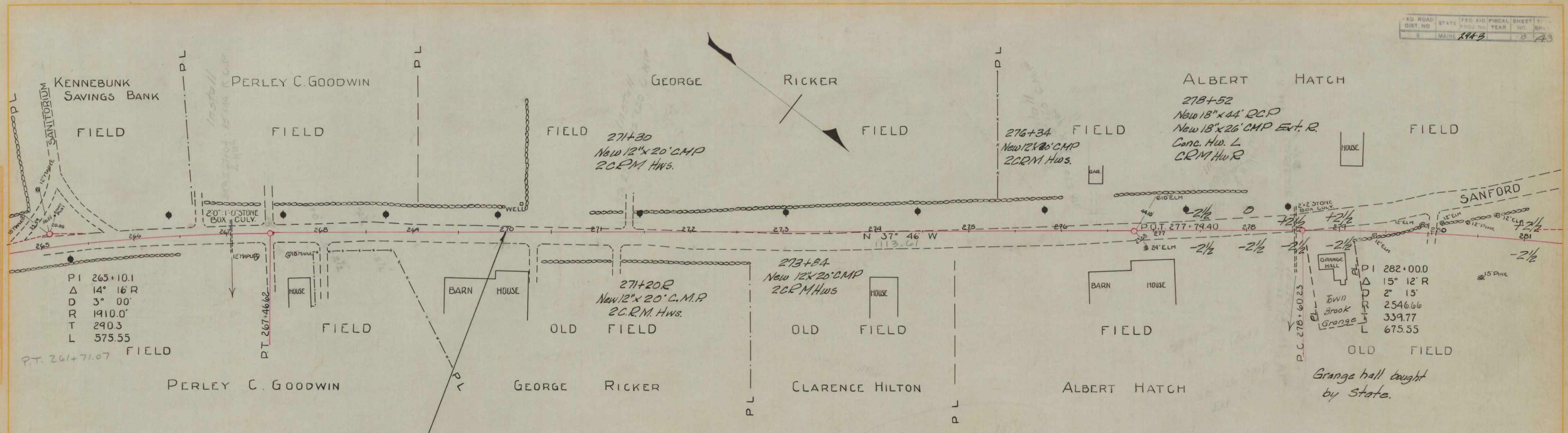
A. N. HOOPER
 P.I. 237+64.2
 Δ 11° 40' L
 D 10° 16' 30"
 T 464.20
 L 925.5
 R = 4493.79

STA 228+50 TO STA 270+0
 NOT A PART OF THIS PROJECT
 Sta. 228+50 to 270+0 - Not a part of this Project.



PLAN
 E.S. METCALF
 LIBBY L. 35
 FOSTER
 ASP 3

PROFILE
 E.S. METCALF
 METCALF
 FOSTER L. 35
 ASP 4

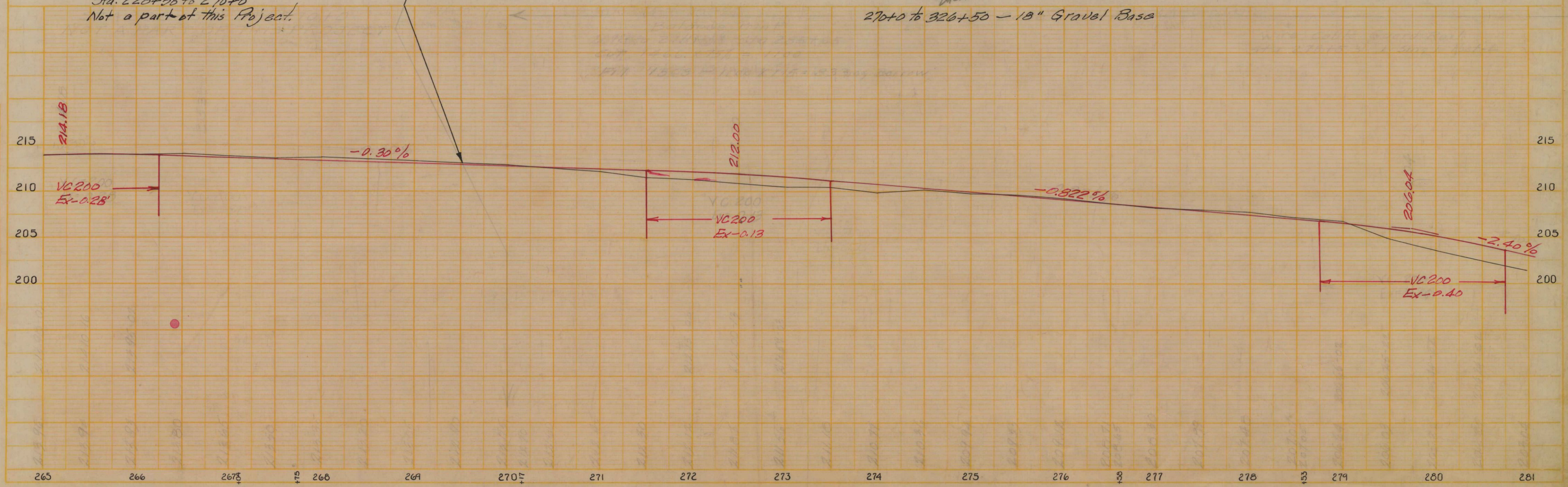


PI 265+10.1
 Δ 14° 16' R
 D 3° 00'
 R 1910.0'
 T 290.3
 L 575.55

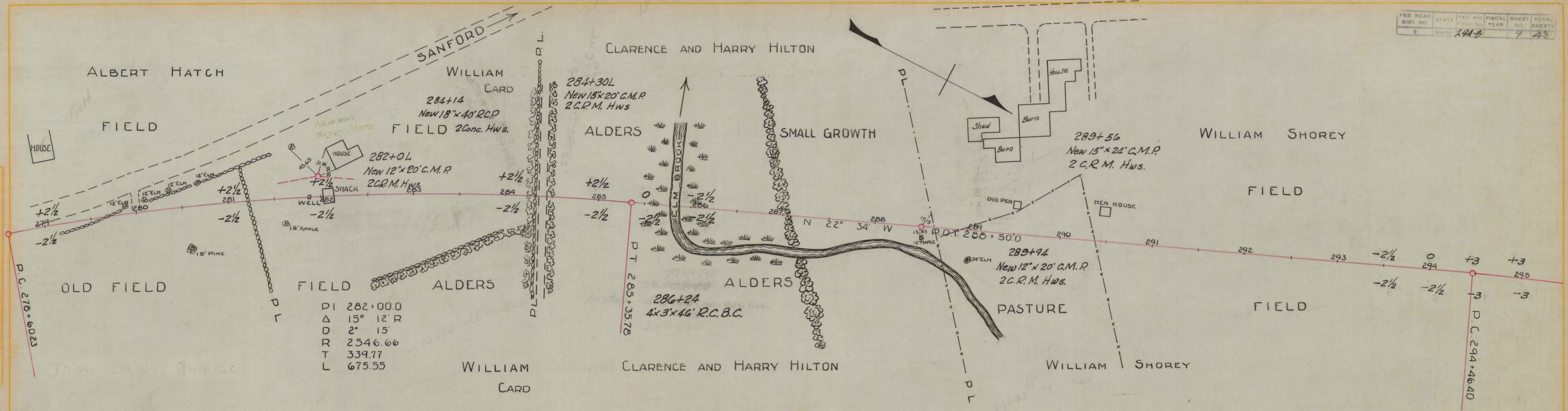
PI 282+00.0
 Δ 15° 12' R
 D 2° 15'
 R 2546.66
 T 339.77
 L 675.55

Sta. 228+50 to 270+0
 Not a part of this Project.

270+0 to 326+50 - 18" Gravel Base



PLAN
 E.S. METCALF
 LIBRARY
 FOOTER
 L. 35
 12.31
 11-A-3p-3



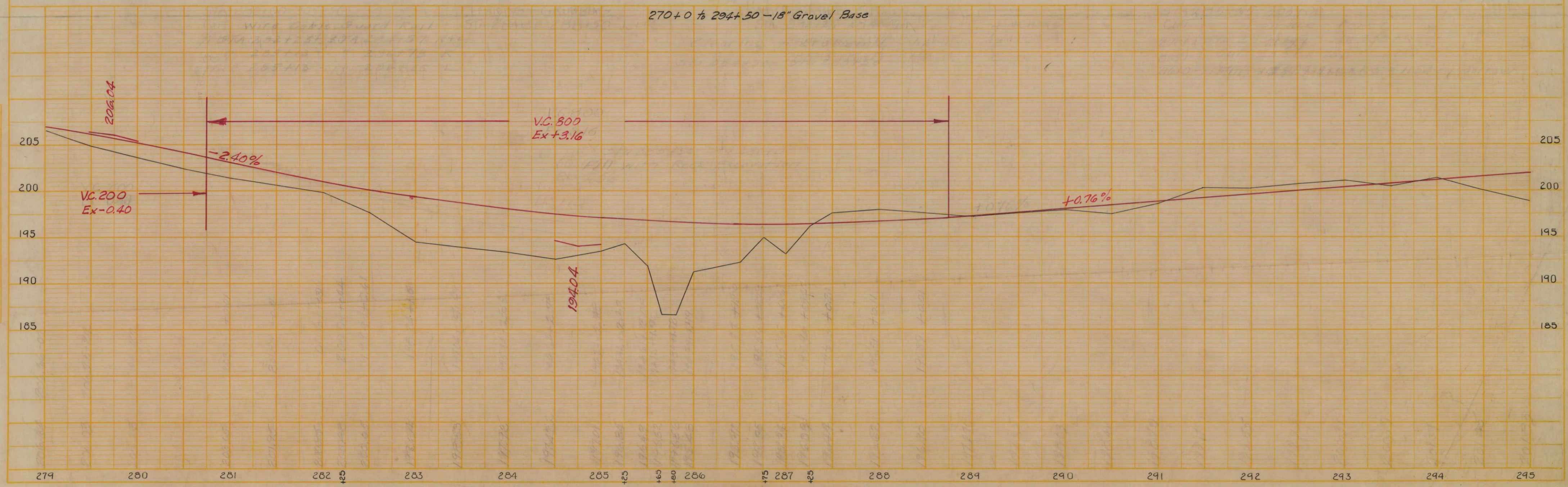
PI	282+00.0
Δ	15° 12' R
D	2" 15'
R	2546.66
T	339.77
L	675.55

P.T. 285+35.78

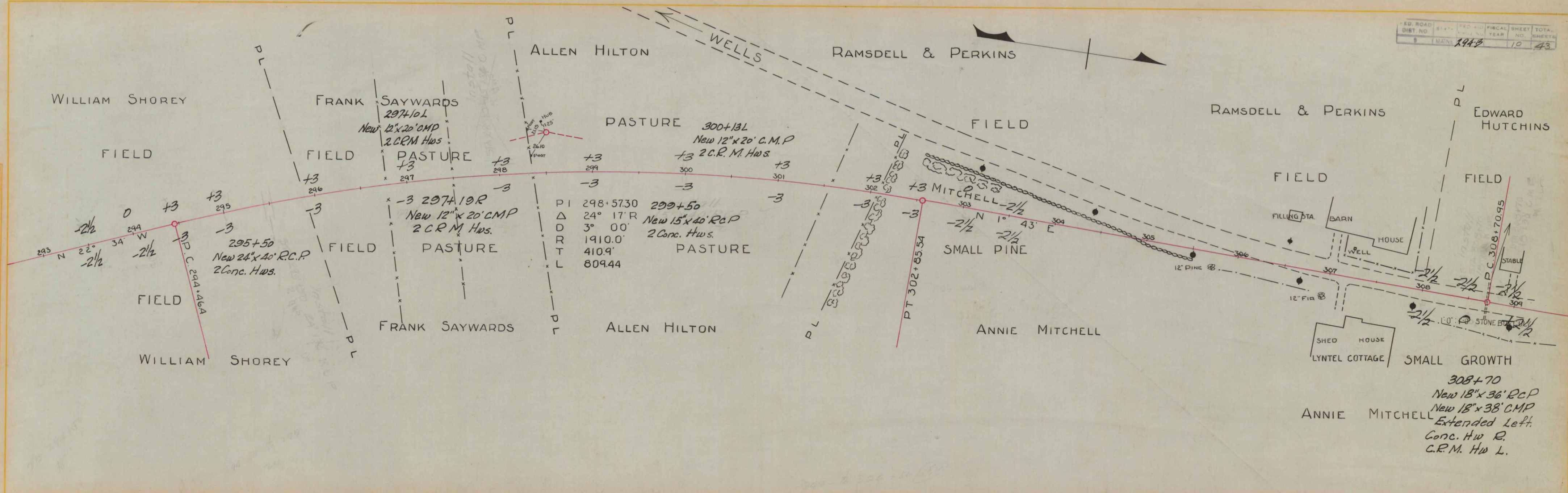
P.C. 294+46.40

270+0 to 294+50 - 18" Gravel Base

PROFILE
 E.S. METCALF
 METCALF
 FOOTER
 L. 35
 12.31
 11-A-3p-4

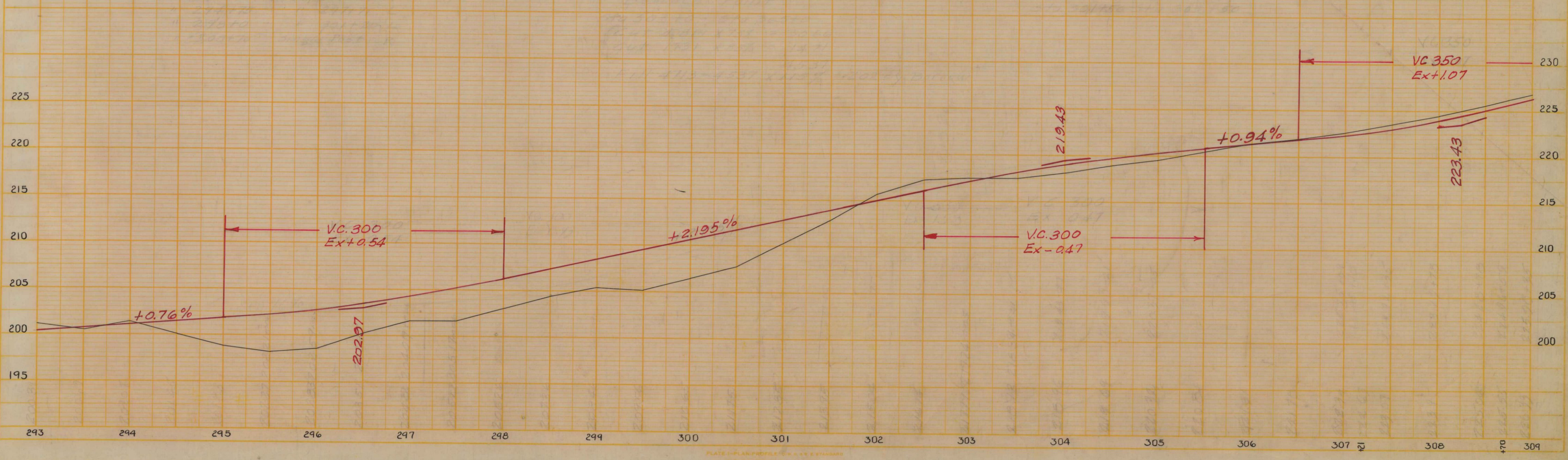


BY E.S. METCALF
 CHECKED BY LIBBY
 DATE 12-34
 PROJECT NO. 1-35
 DRAWING NO. 1-35
 SCALE 1" = 40'

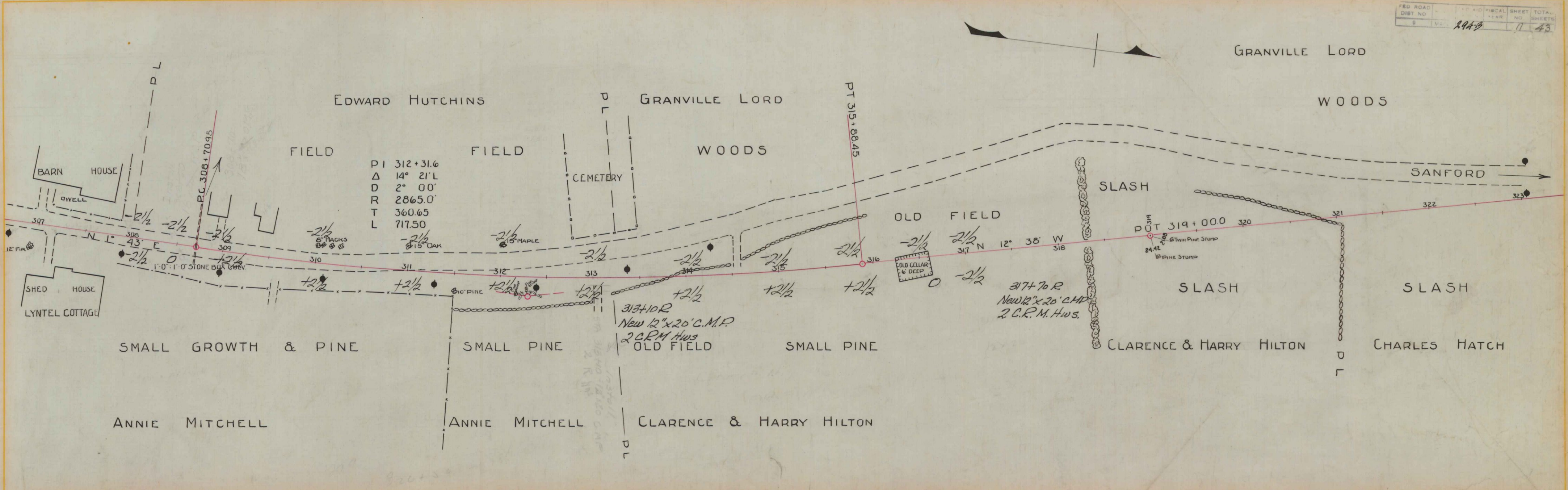


270+0 to 294+50 - 18" Grav. Base
 294+50 to 299+0 - 24" Grav. Base
 299+0 to 326+50 - 18" Gravel Base

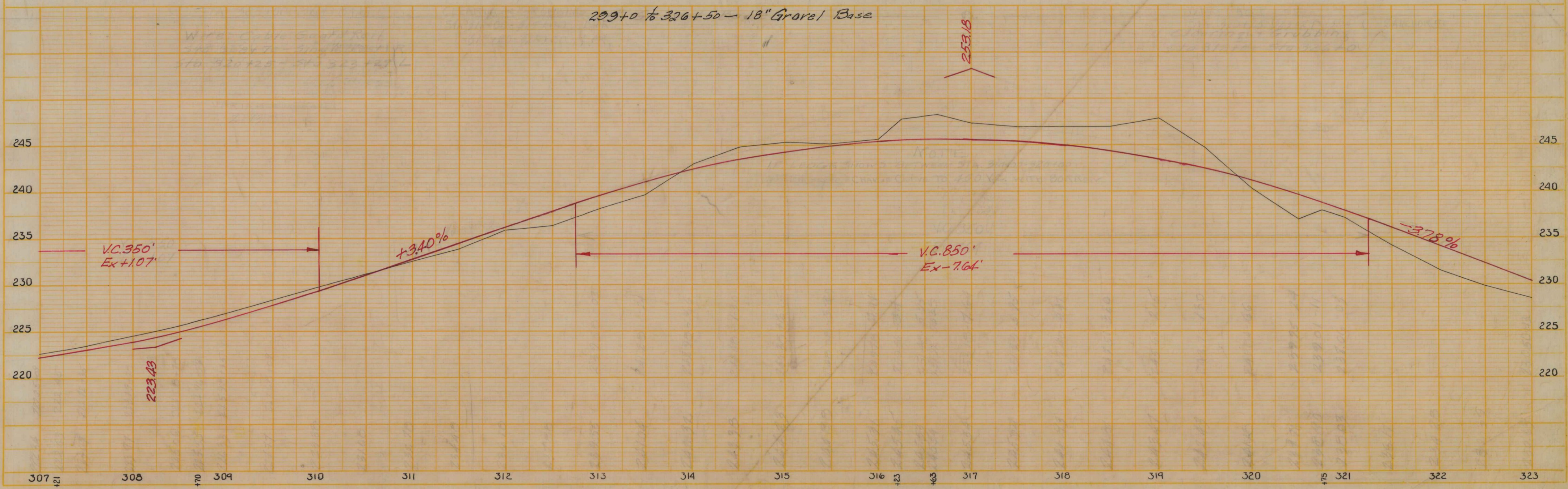
BY E.S. METCALF
 CHECKED BY METCALF
 DATE 12-34
 PROJECT NO. 1-35
 DRAWING NO. 1-35
 SCALE 1" = 40'

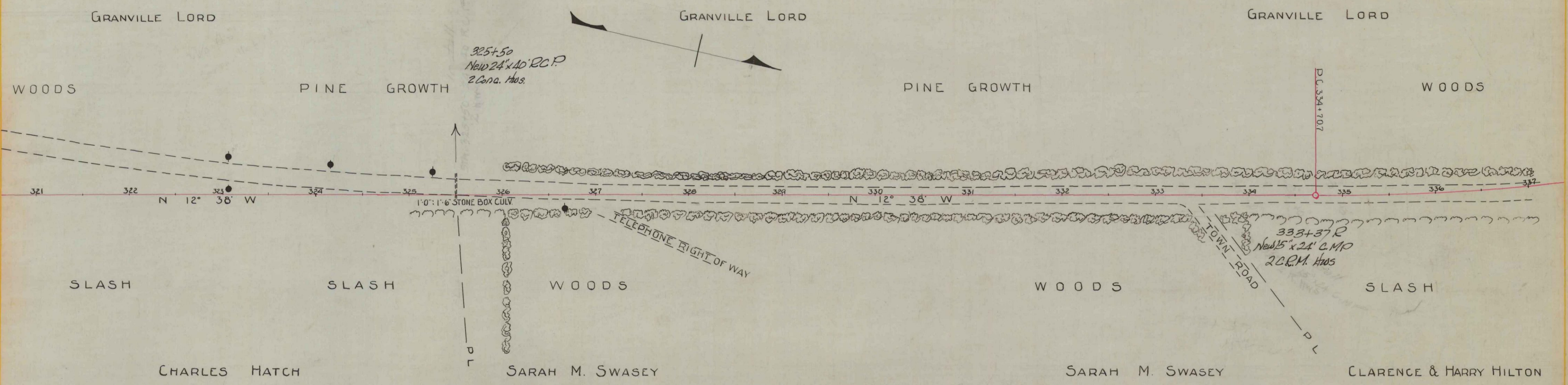


PLAN
 E.S. METCALF
 LUBBY 12-34
 FOOTER 1-35
 DATE 10-1-48
 DRAWN BY METCALF
 IN CHARGE METCALF
 A.S.P. 3



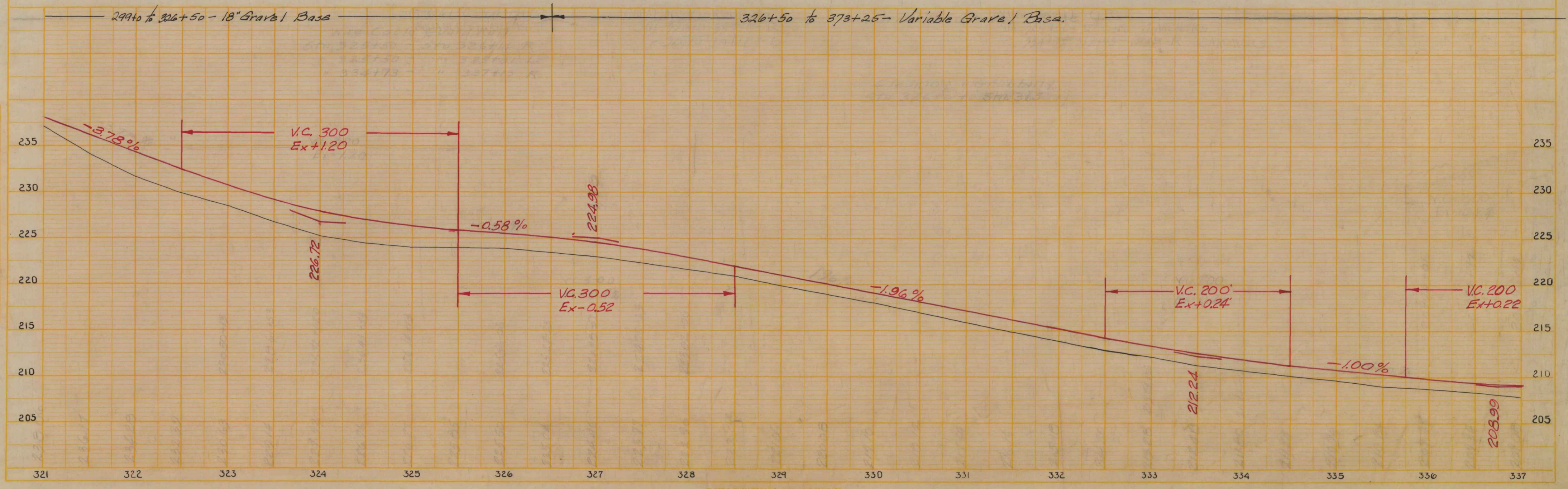
PROFILE
 E.S. METCALF
 METCALF 12-34
 FOOTER 1-35
 DATE 10-1-48
 DRAWN BY METCALF
 IN CHARGE METCALF
 A.S.P. 3

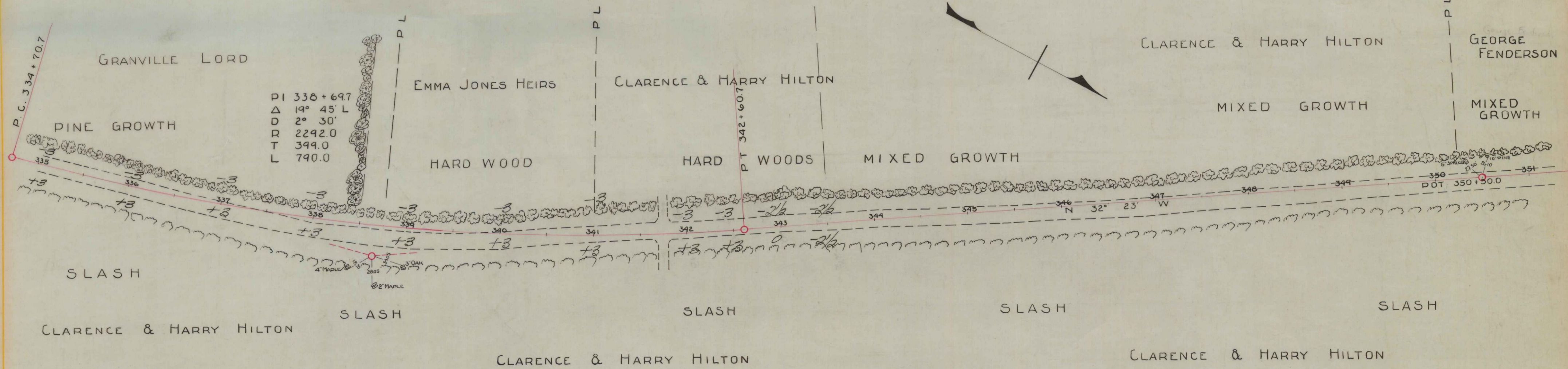




E.S. METCALF 12-34
 FOSTER LIBBY 1-35
 PLAN
 SITE NO. A353

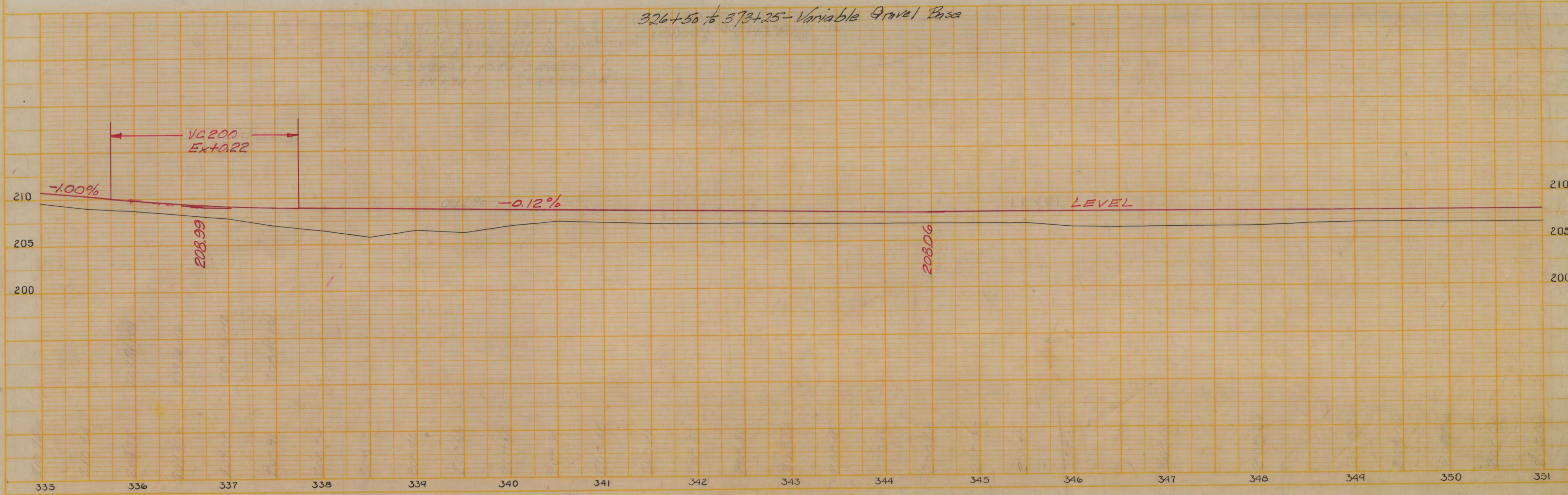
E.S. METCALF 12-34
 METCALF FOSTER 1-35
 PROFILE
 SITE NO. A353





E.S. METCALF 12-34
 FOSTER 1-35
 A.S.P. 3

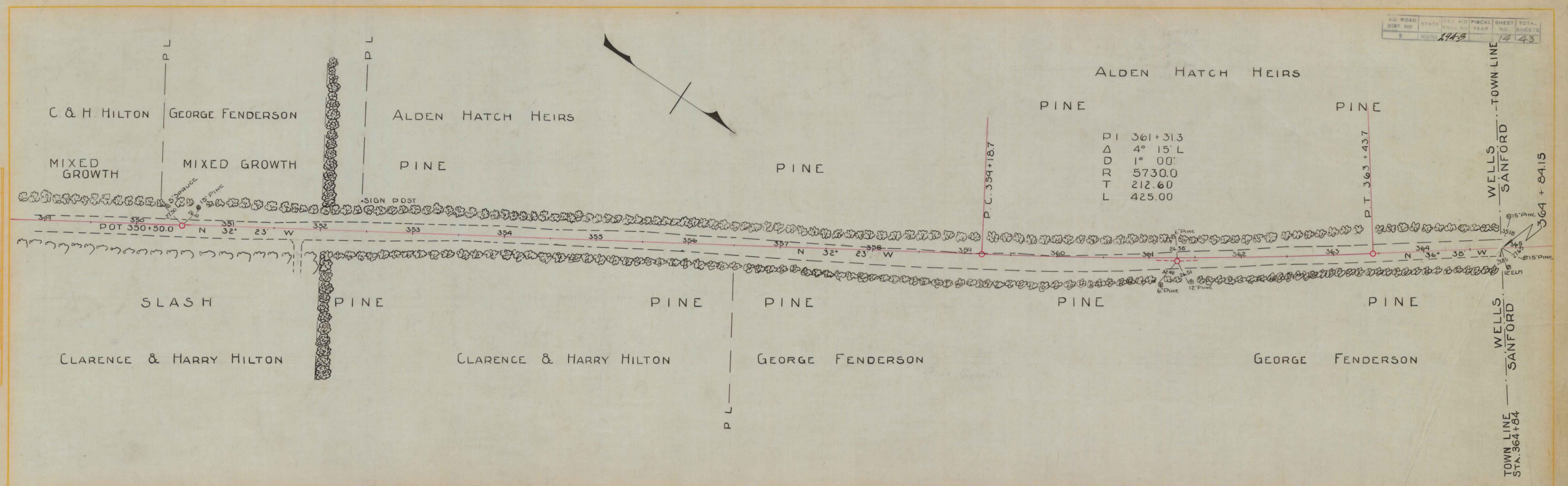
326+50 to 373+25 - Variable Gravel Base

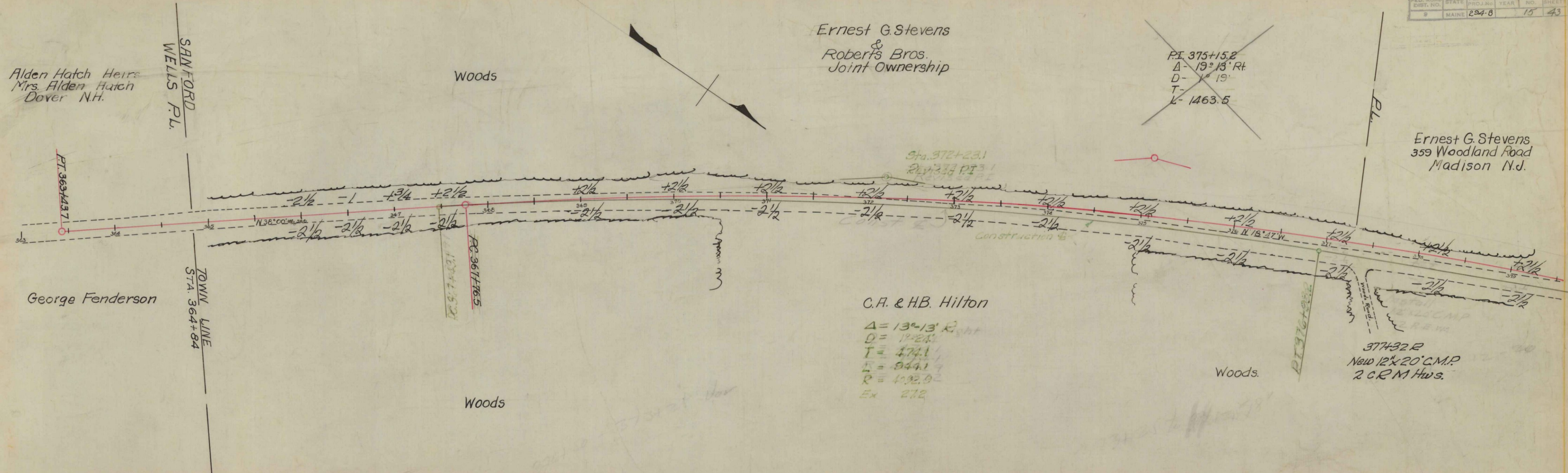


E.S. METCALF 12-34
 METCALF FOSTER 1-35
 A.S.P. 3

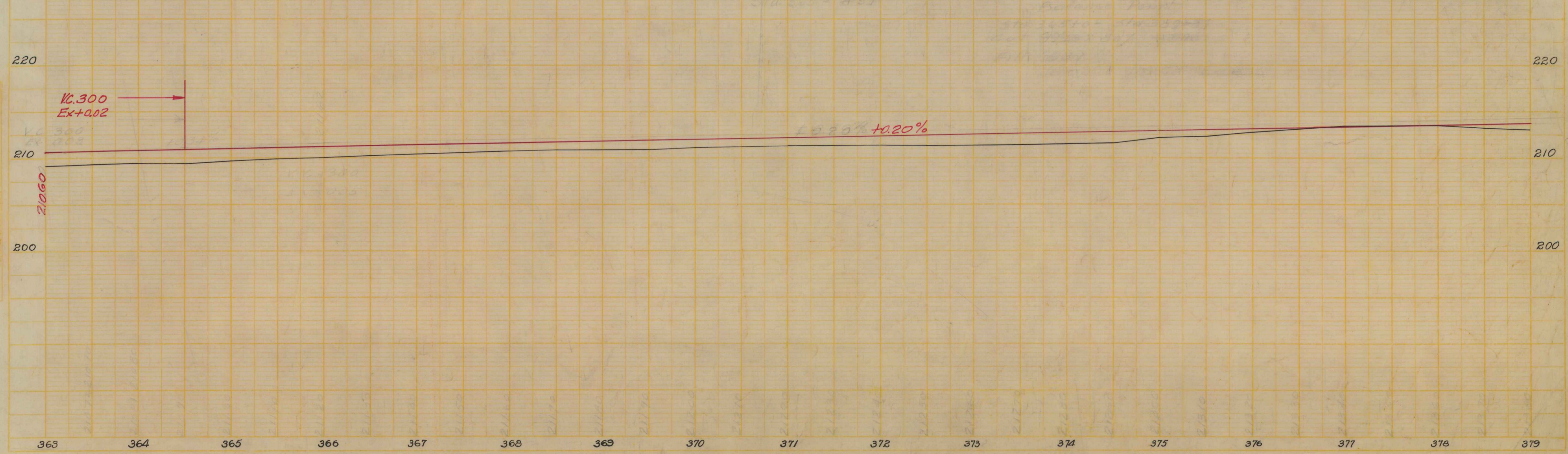
E.S. METCALF 12.34
 LIBBY 1.35
 FOSTER
 PLAN
 DATE 1933
 SHEET NO. A-3p-3

E.S. METCALF 12.34
 METCALF FOSTER 1.35
 PROFILE
 DATE 1933
 SHEET NO. A-3p-3





326+50 to 373+25 - Variable Gravel Base 373+25 to 382+25 - 18" Gravel Base



DATE	BY	CHKD	APP'D

DATE	BY	CHKD	APP'D

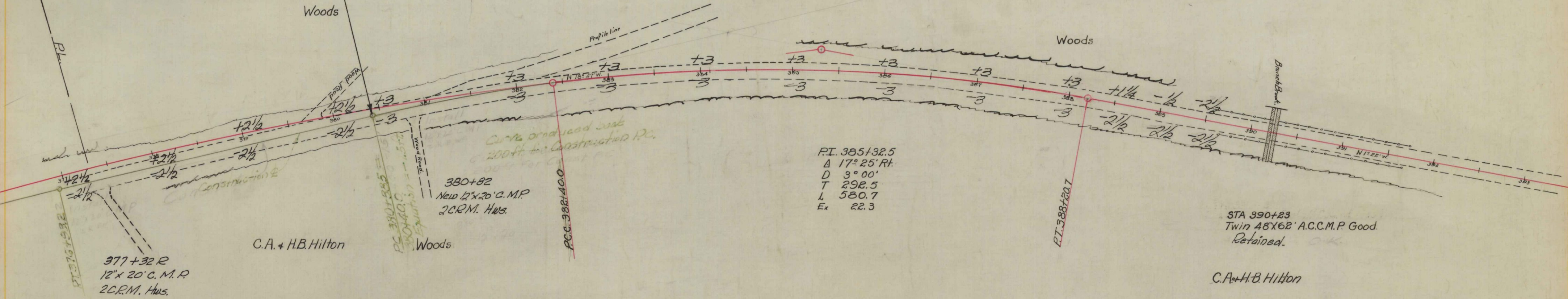
Sta. 380+37.0 End of
F.A. Proj. No. 294-B (1st Part) =
Sta. 0+0 Beg. Proj. No.
N.R.S. 290 (1935)

Ernest G. Stevens
Sta. 380+37.0 Beg.
F.A. Proj. No. 290

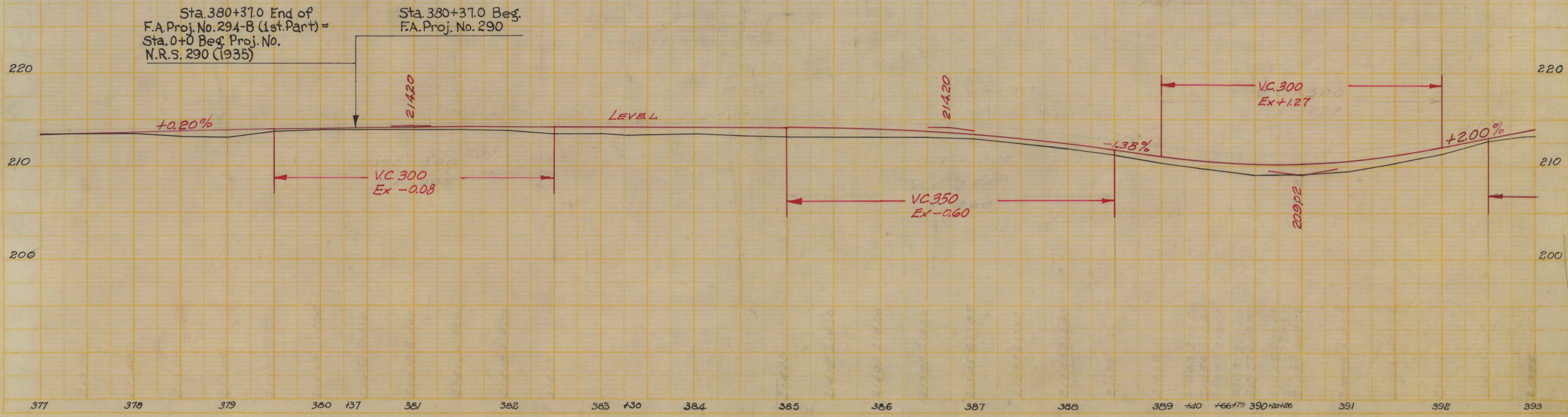
James Mc.Cullough.

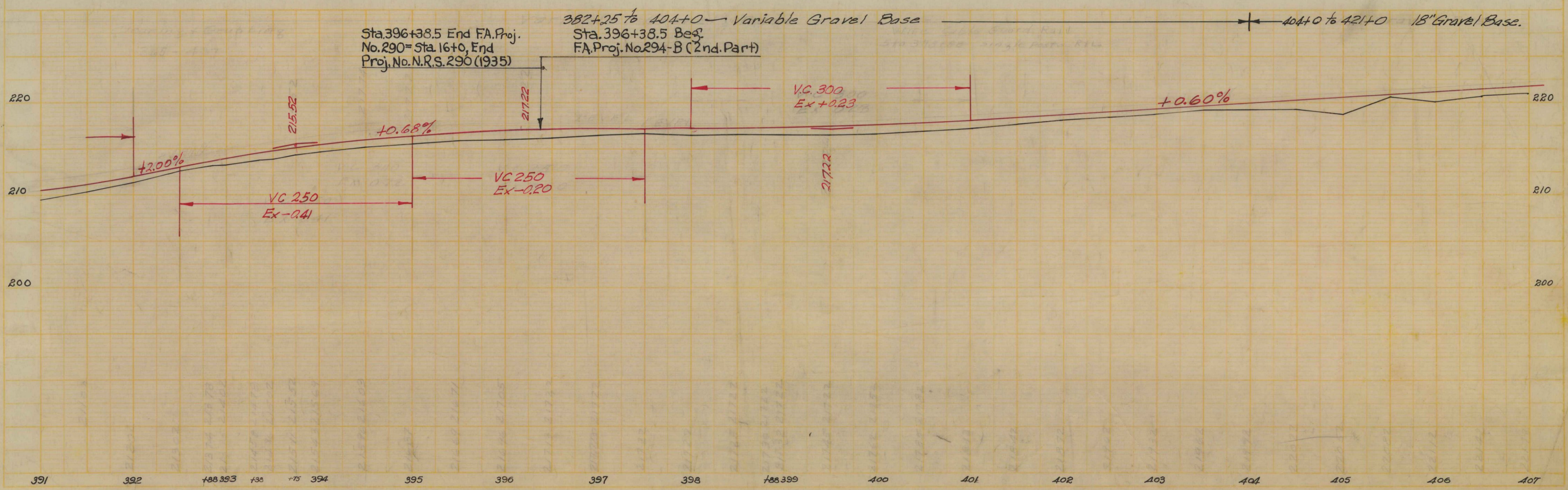
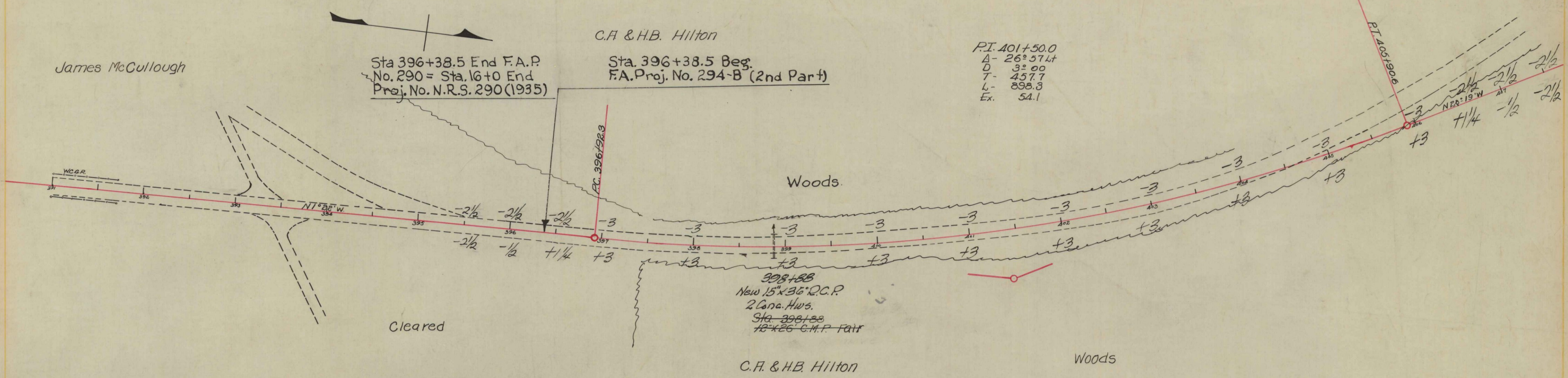
FILE	NO.
DATE	
BY	
REVISION	

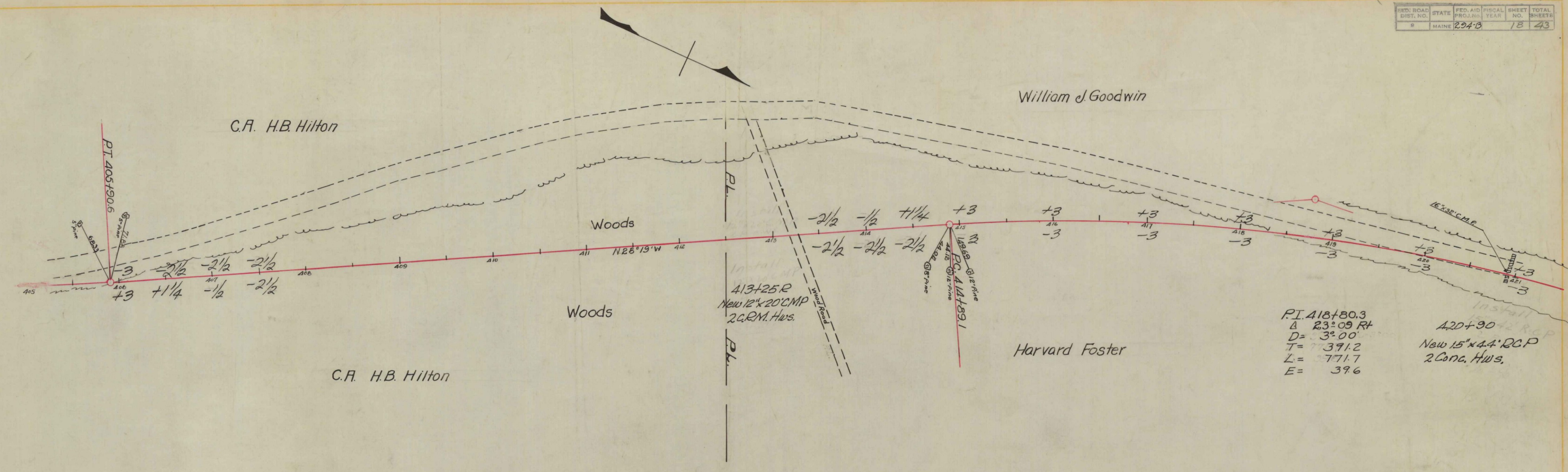
PROFILE	NO.
DATE	
BY	
REVISION	



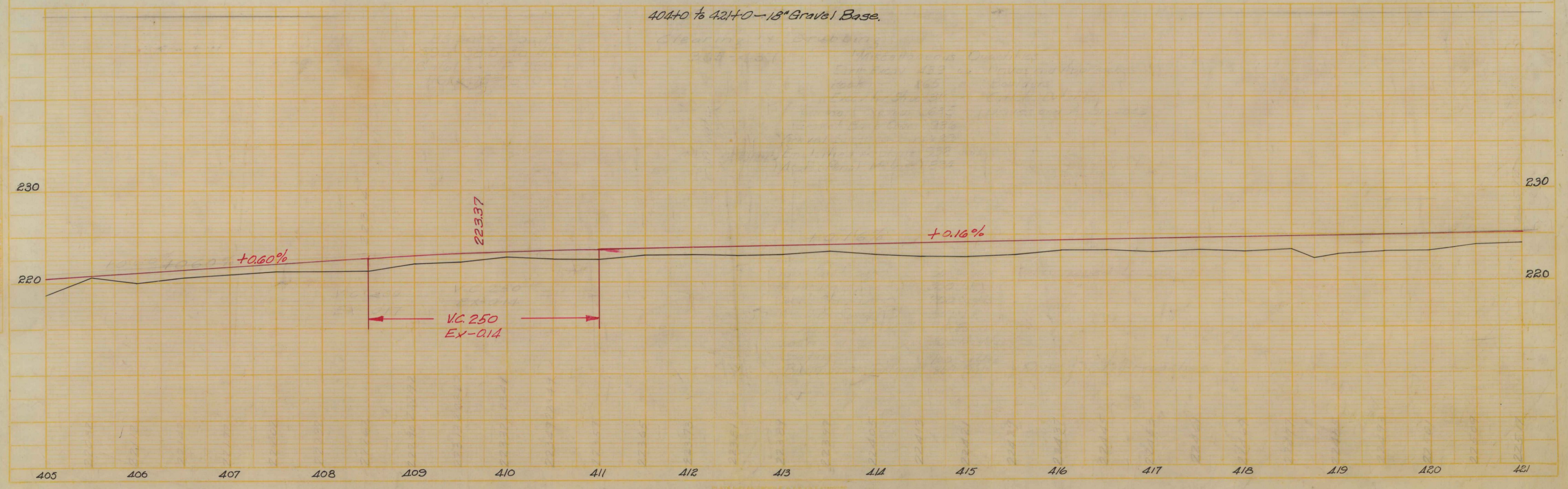
373+25 to 382+25 - 18" Gravel Base 382+25 to 404+0 - Variable Gravel Base





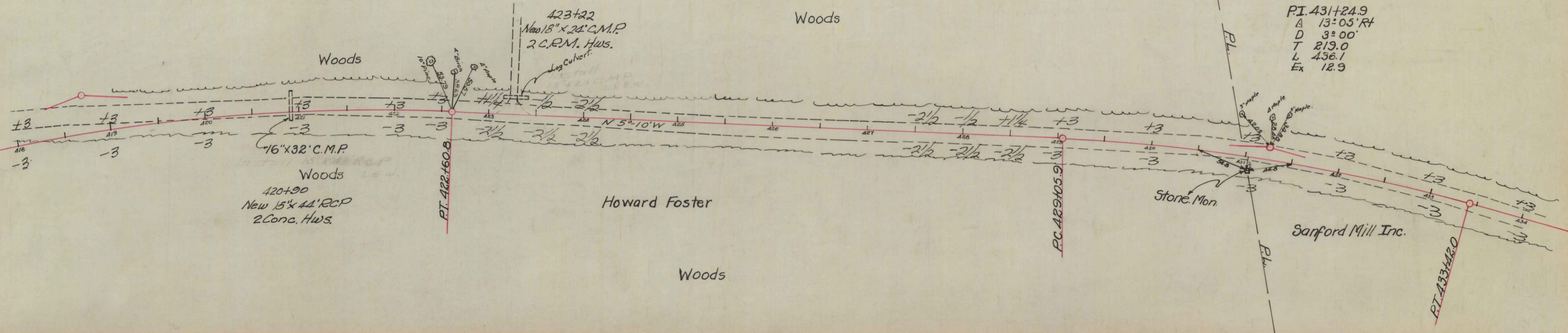


404+0 to 421+0 - 18" Gravel Base

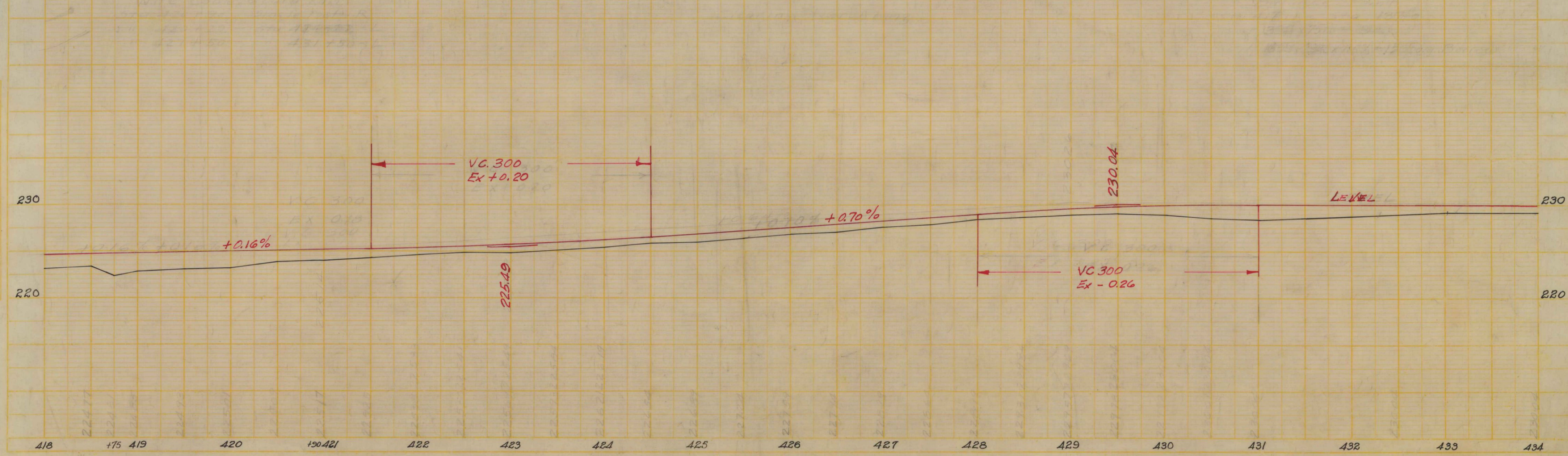


William J. Goodwin

Alta Rankin



404+0 to 421+0 - 18" Gravel Base 421+0 to 437+0 - Variable Gravel Base



PLANS
NOTES
DATE: 10/1/43

PROFILE
NOTES
DATE: 10/1/43

PI = 448+50.7
 Δ = 54° 06' Lt
 D = 4° 00'
 T = 731.5
 L = 1352.5
 Ex = 176.0

