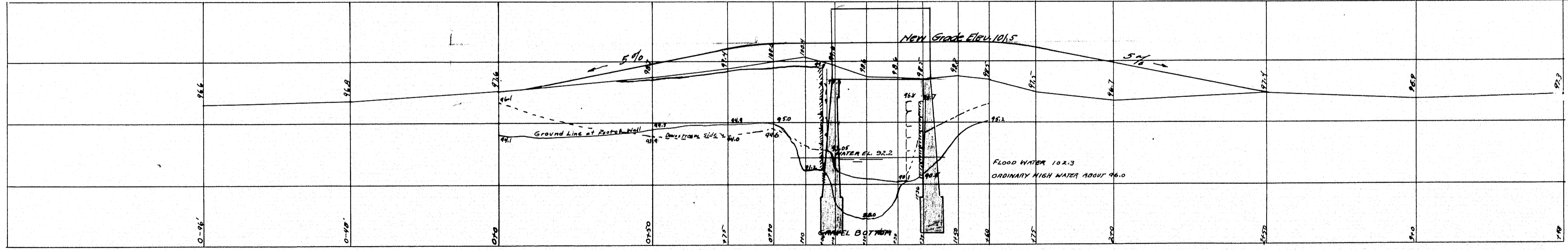


CROSS-SECTION OF APPROACH FILL

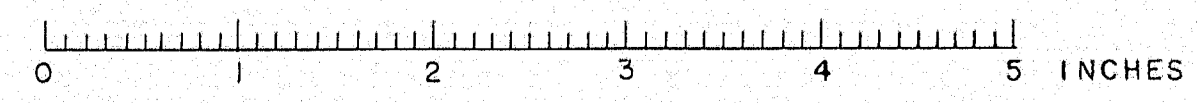
PLAN SCALE: 1" = 20'



PROFILE ALONG SURVEY LINE
 SCALES: H: 1" = 20'
 V: 1" = 5'

SURVEYED BY: H.A.R. 7-4-23
 PLOTTED " " " 7-17-23
 TRACED " " "

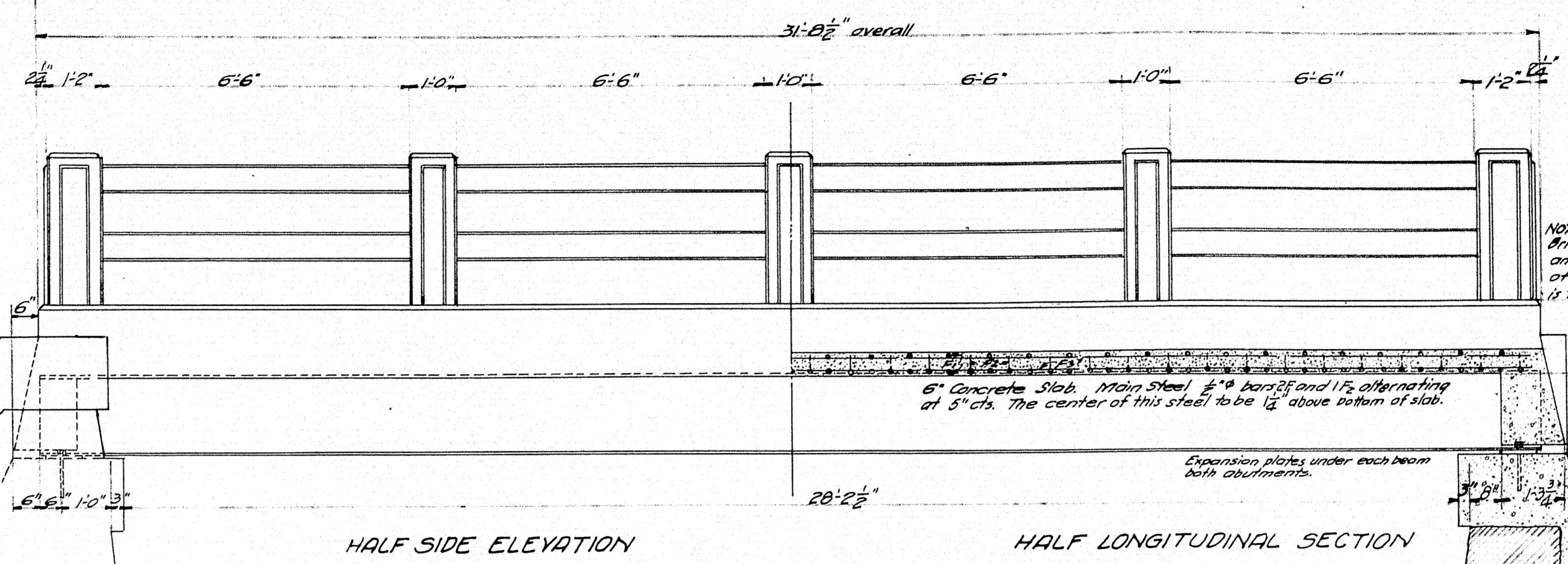
MAINE HIGHWAY COMMISSION
 BRIDGE DIVISION
MATTACEUNK STREAM BRIDGE
 IN THE TOWN OF
MATTAWAMKEAG, PENOBSCOT CO.
 SURVEY PLAN
 SHEET 1 AUGUSTA, ME JULY 17, 1923.



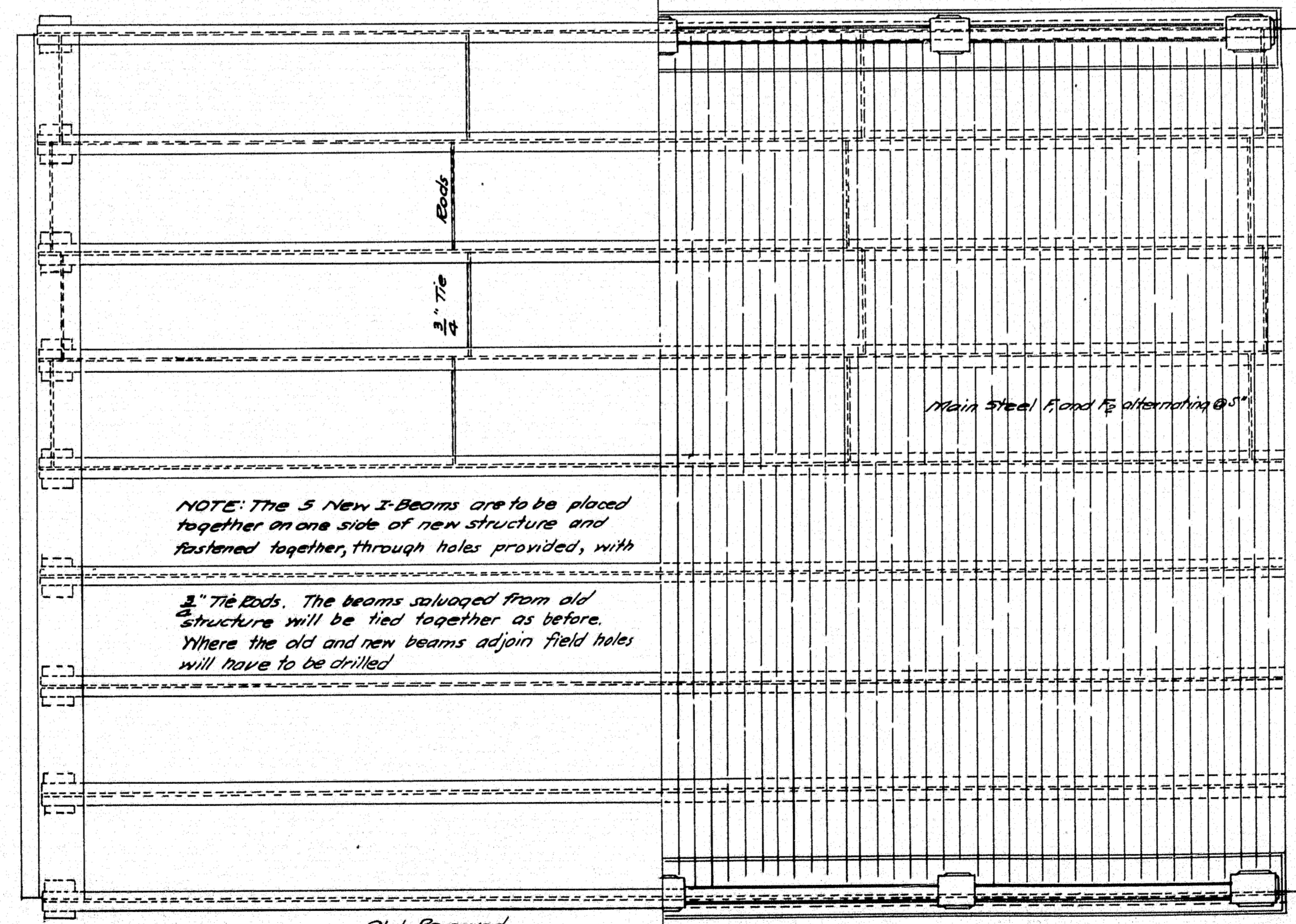
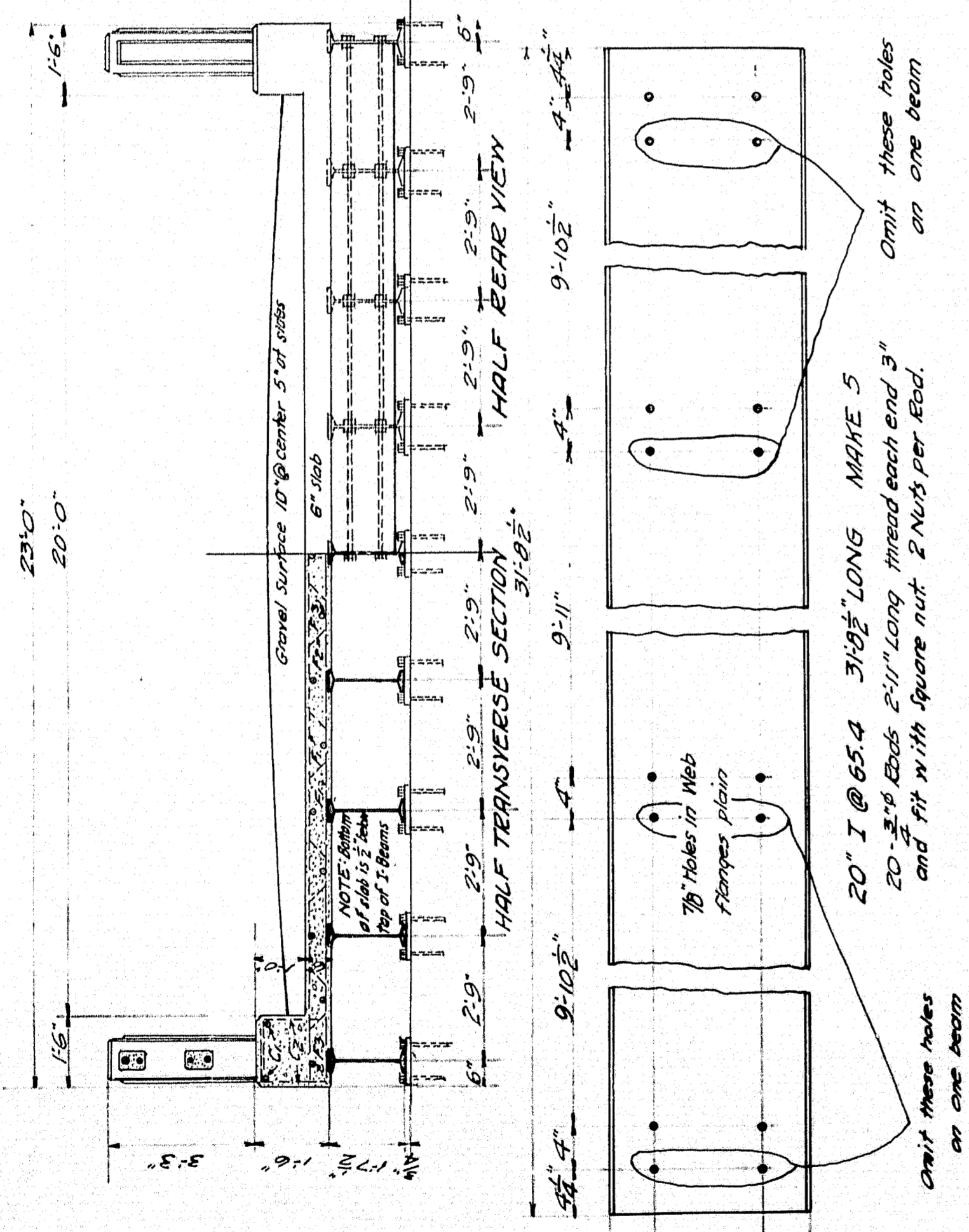
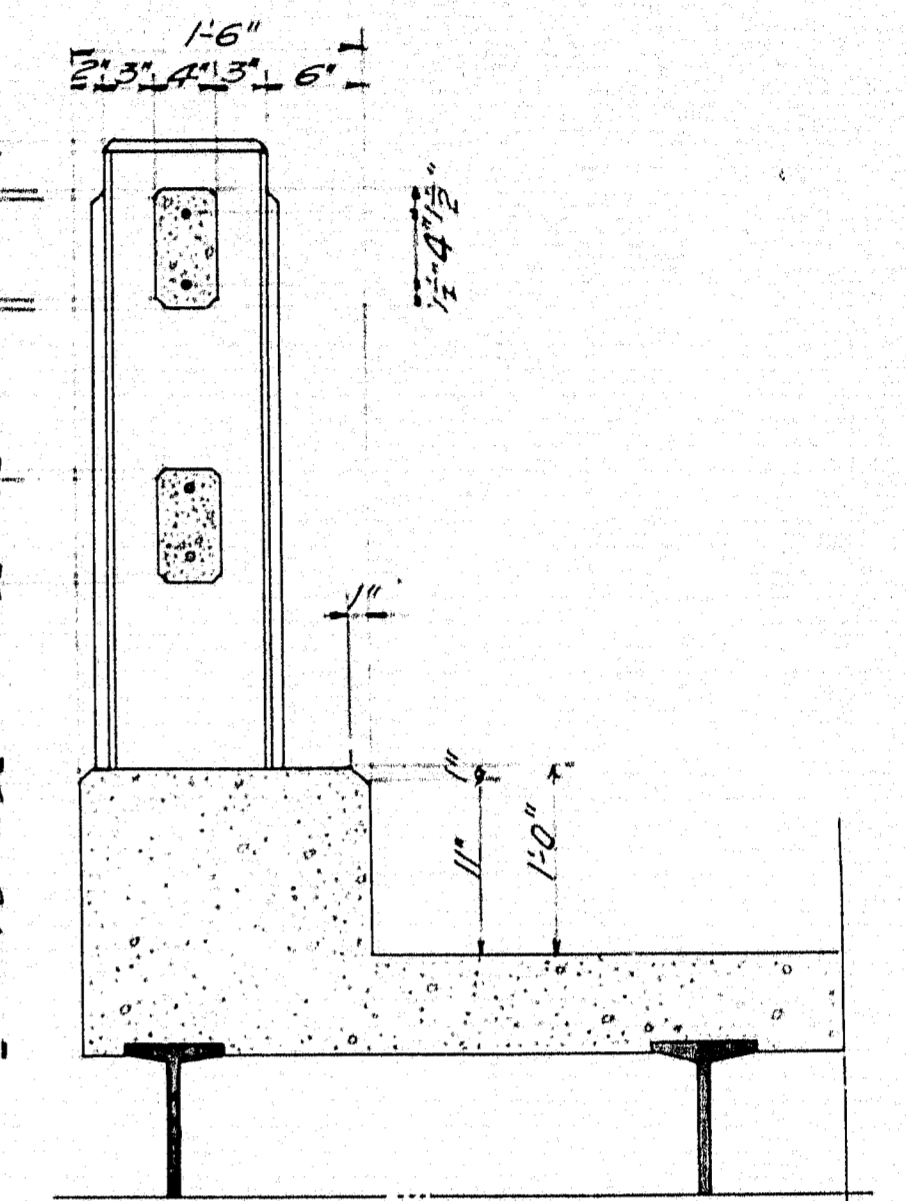
STEEL SCHEDULE

Mark	Size	No. Req'd	Length	Location
F1	1/2" x 3"	72	23'-10"	Slab straight
F2	1/2" x 3"	38	24'-8"	slab
F3	1/2" x 3"	17	31'-8"	straight
C1	1/2" x 4"	4	31'-6"	Curbs
C2	1/2" x 4"	64	3'-10 1/2"	" bent
R	3/8" x 7"	32	6'-10"	Rails Straight
P	1/2" x 4"	40	4'-0"	Posts Straight

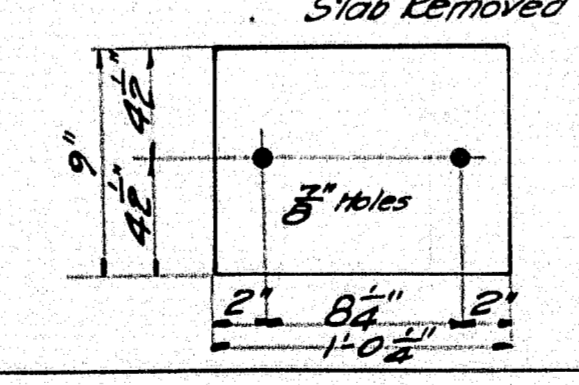
All steel dimensions are given on @ of bar.
All steel to be plain rounds structural grade.



NOTE: The 2' gap between bridge Soffit and Cross-Beam, and the 1' gaps between sides of Superstructure and Wings is to be covered with 2 layers of 2-ply roofing felt. Deck face of cross-beam to be covered with 2-ply roofing felt and each layer as applied.

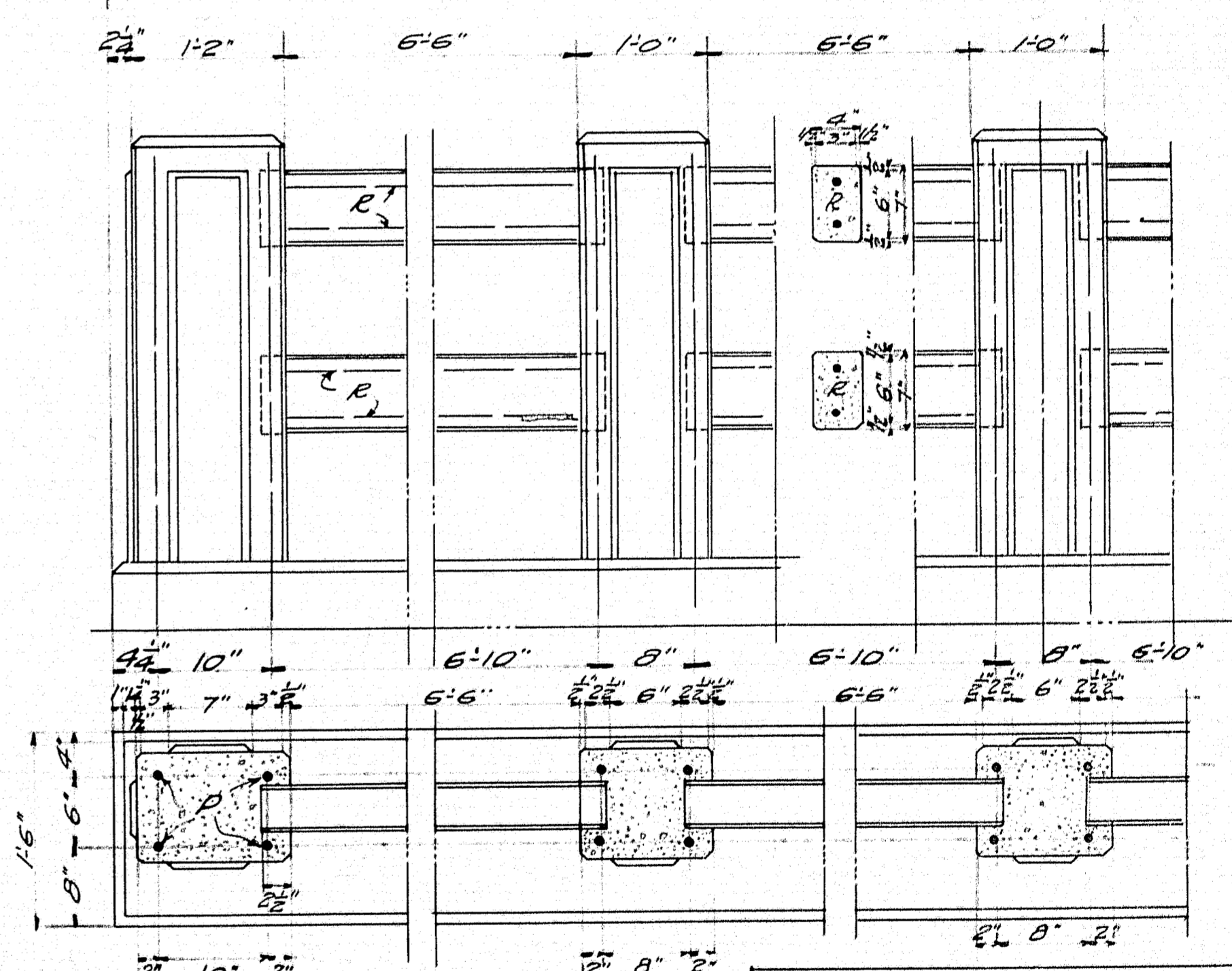


NOTE: The 5 New I-Beams are to be placed together on one side of new structure and fastened together, through holes provided, with 3" Tie Eads. The beams salvaged from old structure will be tied together as before. Where the old and new beams adjoin field holes will have to be drilled.



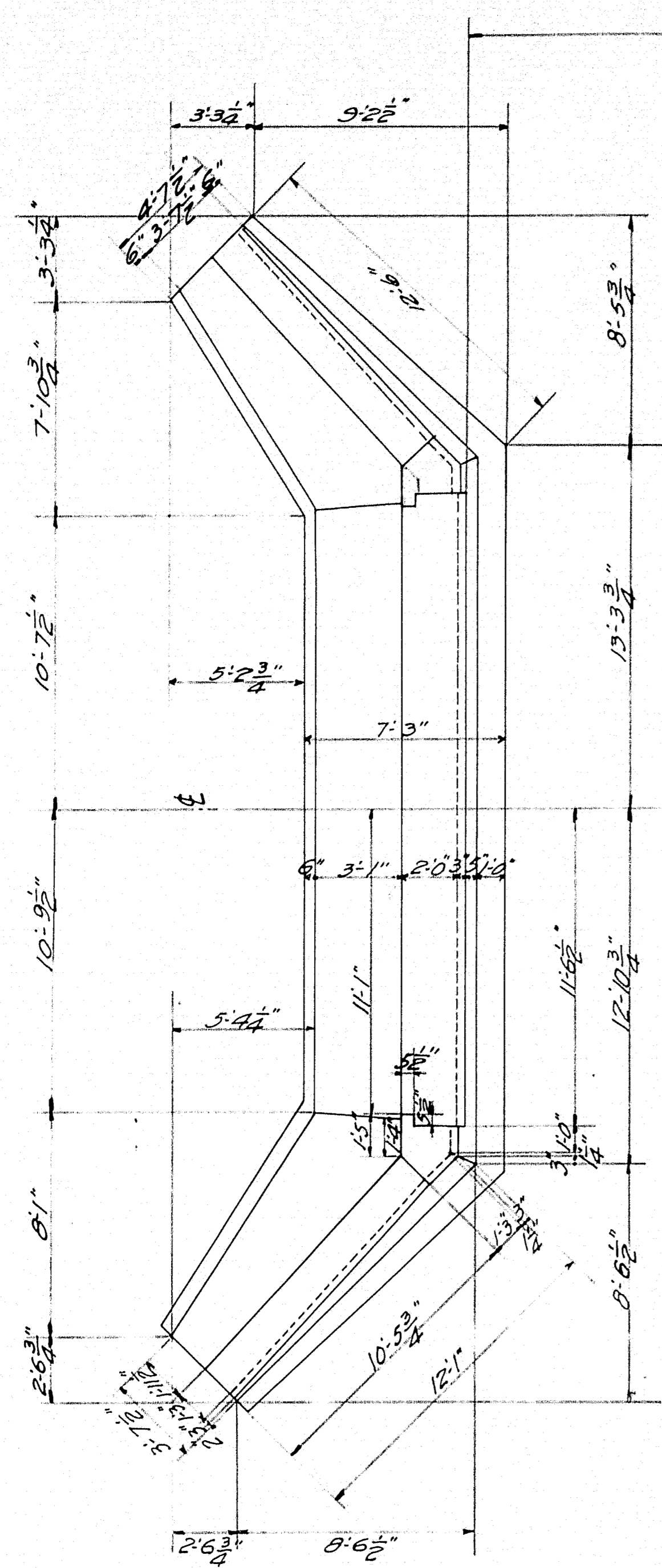
FLOOR PLAN
~ MASONRY PLATES ~
21.9' x 3/4" x 1'-0 1/2" Make 18

ANCHOR BOLTS 36 WANTED
12" long. Thread one end 3" and fit with nut.

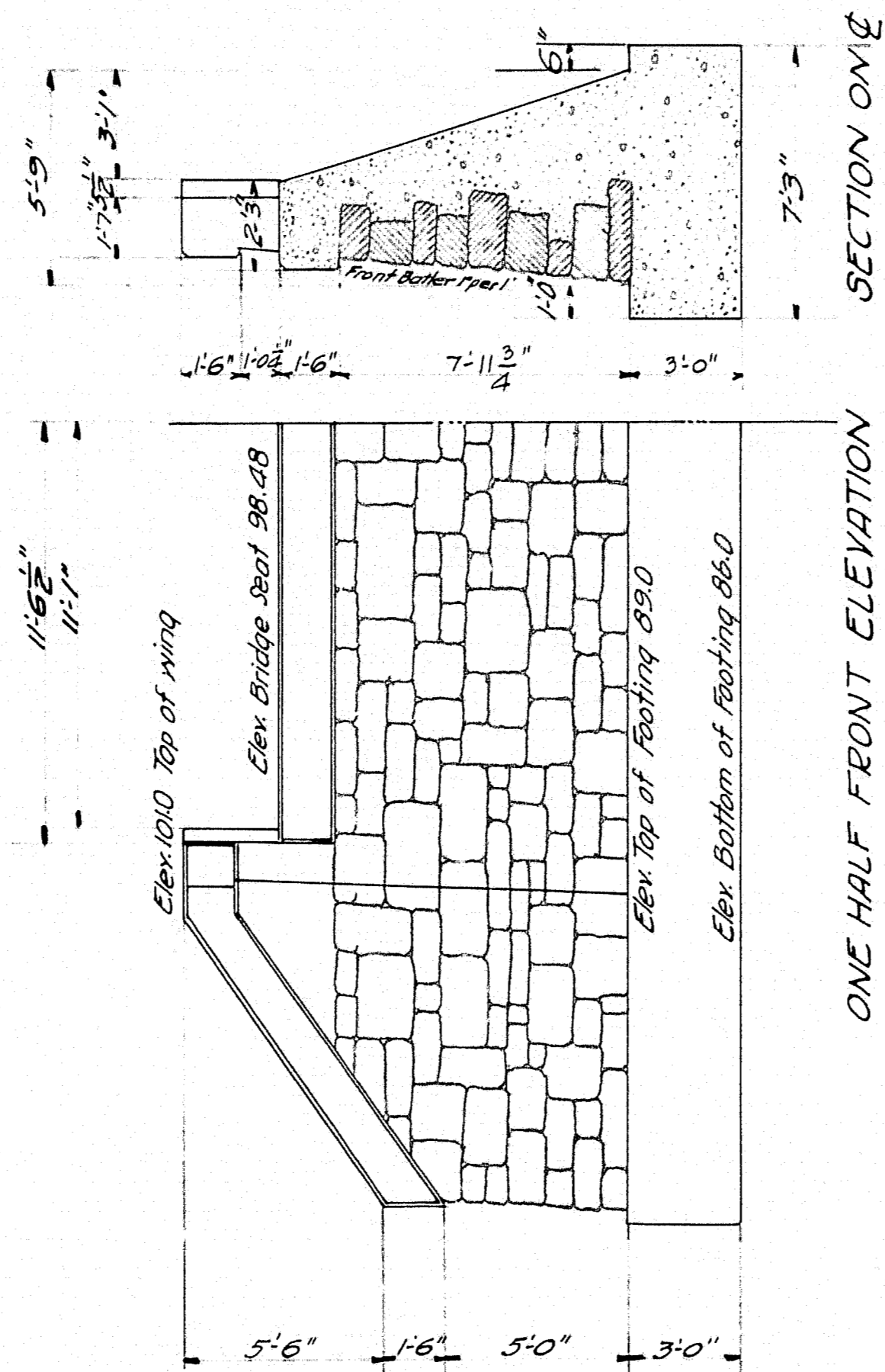


~ RAIL DETAILS ~
Curb to be cast with slab. Precast Rail Bars 6'-11" Long. Place vertical rods for posts in curbs. Forms for posts to be built with Rail Bars in position allowing them to project into posts 2 1/2". Wrap end 6" of each Rail Bar with 2 layers of 2-ply roofing felt. Fold in ends. After post forms are removed, cut away all exposed felt. Panels 3/4" thick on posts. All edges chamfered 1/4" unless otherwise called for.

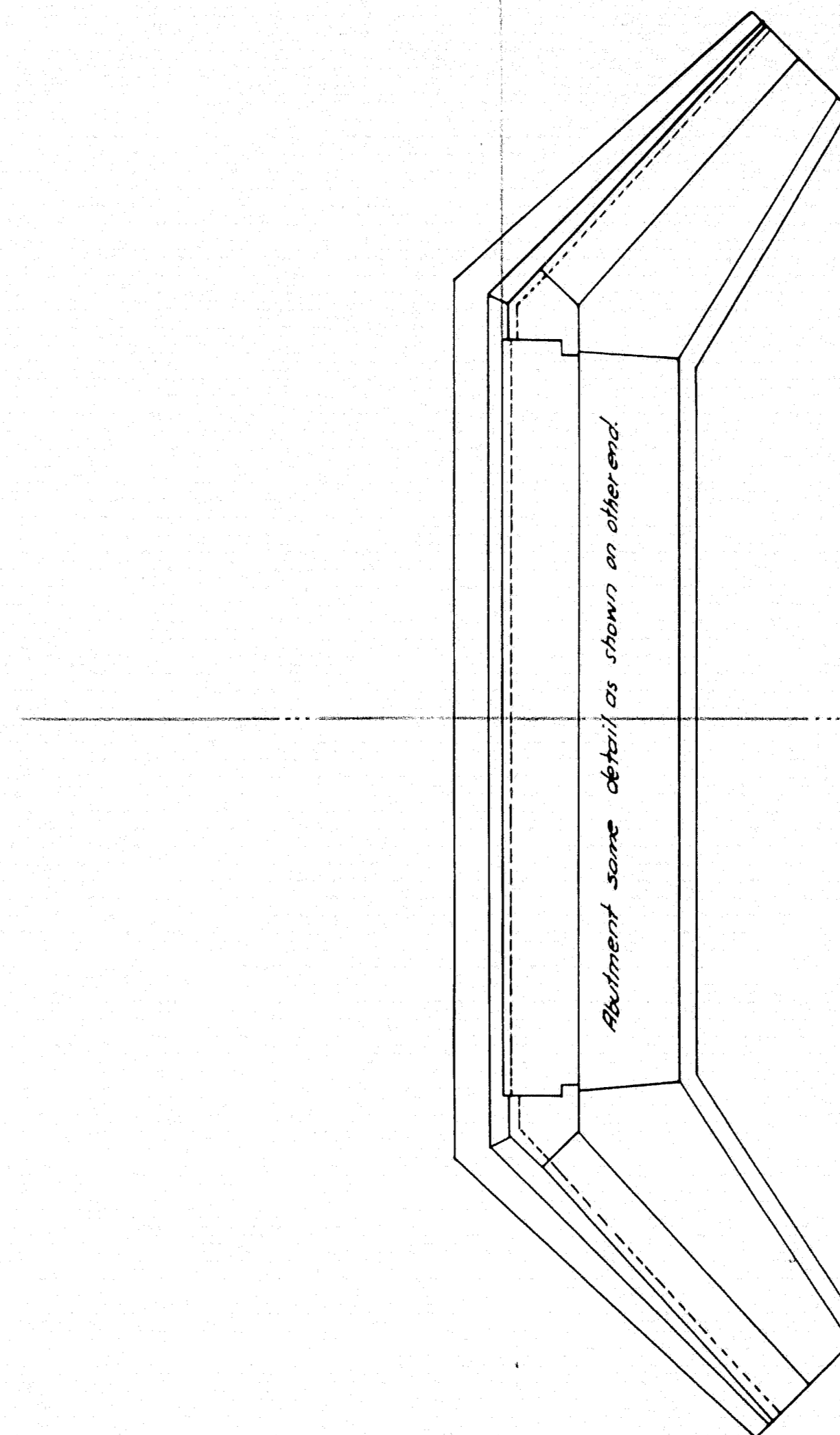
MAINE HIGHWAY COMMISSION
BRIDGE DIVISION
MATTACEUNK STREAM BRIDGE
IN THE TOWN OF
MATTAWAMKEAG
PENOBSCOT COUNTY, ME.
SHEET NO. 2 OF 3 OCT. 31-23



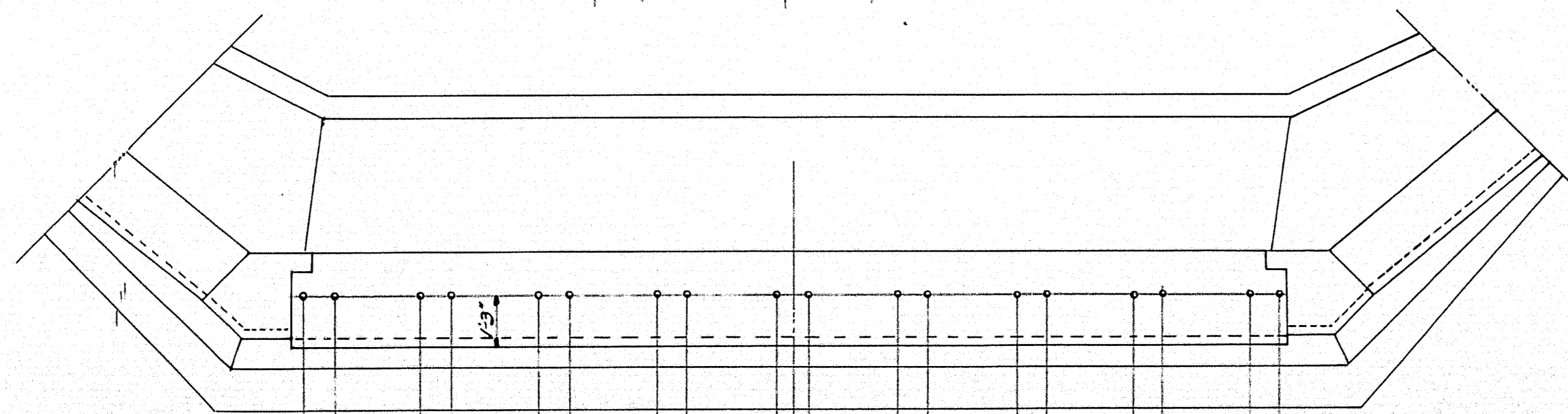
PLAN OF ABUTMENTS
Abutments symmetrical about C



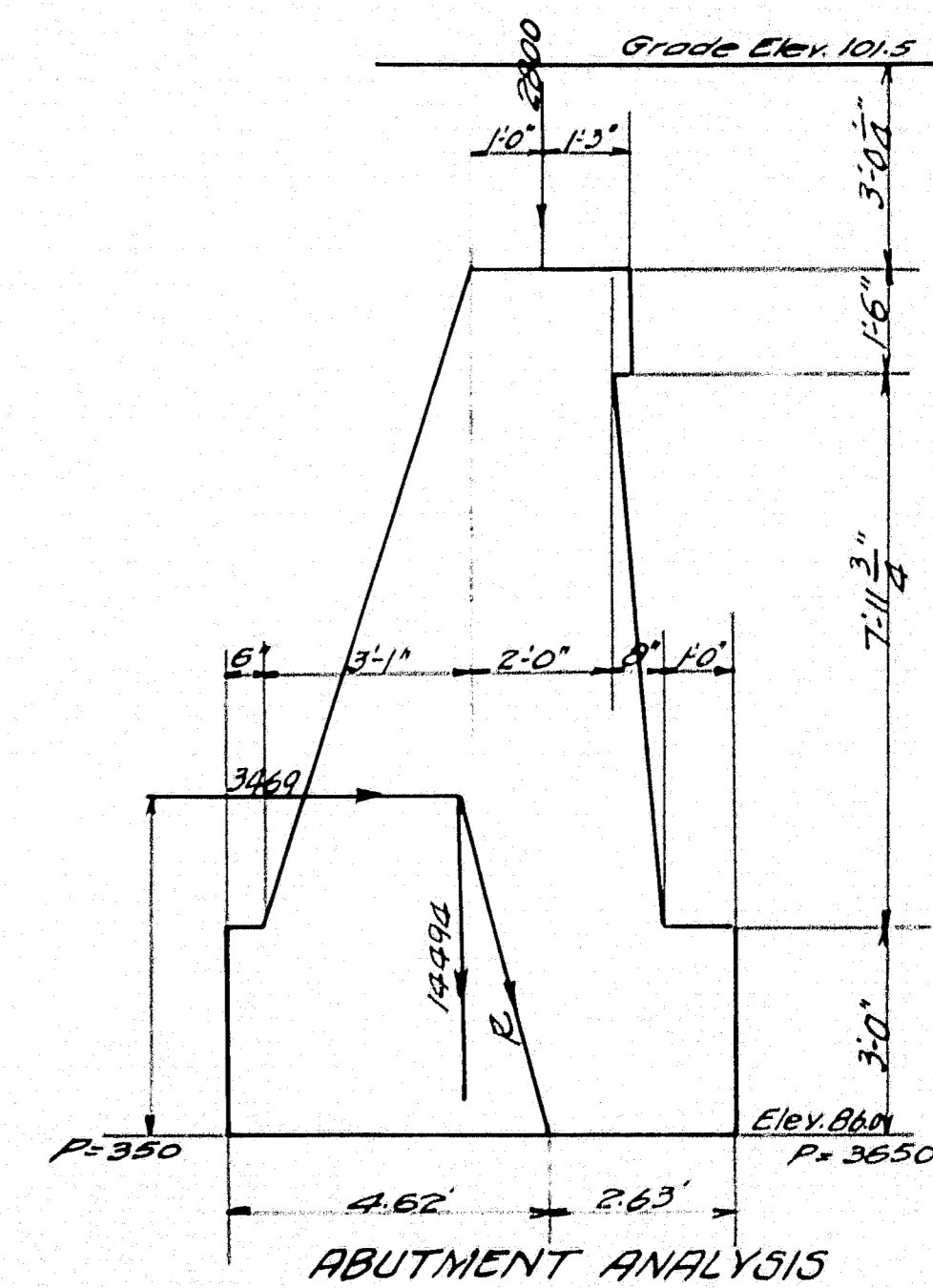
ONE HALF FRONT ELEVATION



Abutment same detail as shown on other end.



LOCATION OF ANCHOR BOLTS



MAINE HIGHWAY COMMISSION
BRIDGE DIVISION
MATTACEUNK STREAM BRIDGE
IN THE TOWN OF
MATTAWAMKEAG
PENOBSCOT COUNTY, ME.
SHEET NO 3 OF 3 OCT. 31-23